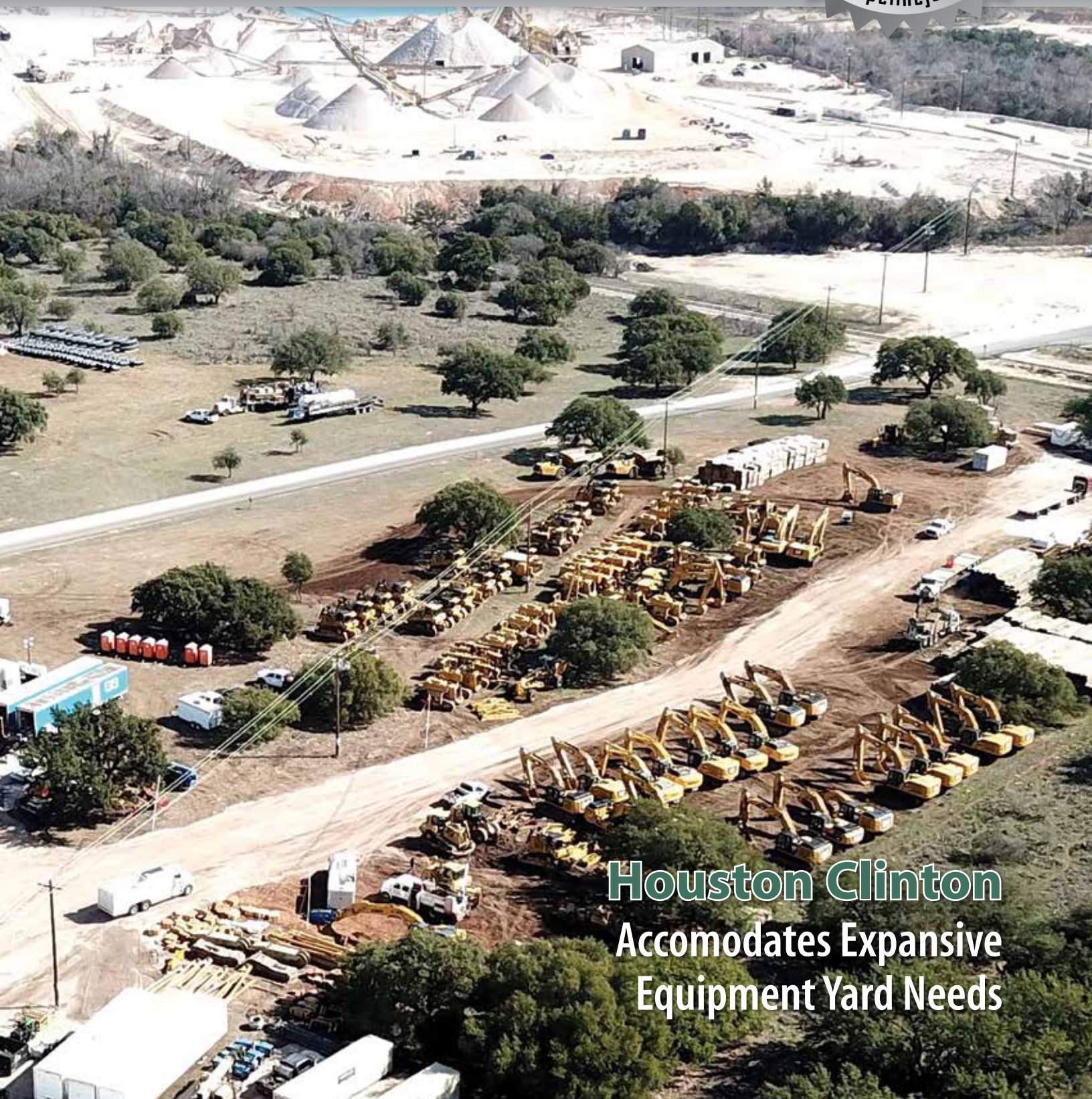


PIPELINERS

HALL of FAME NEWS



Houston Clinton
Accommodates Expansive
Equipment Yard Needs



R-VALUE LLC FOAM

www.rvaluefoam.com

Manufactures • Sells • Installs
BUY DIRECT & SAVE

R-Value Foam, LLC has partnered with the leading chemist and manufacturers to provide the most **COST EFFICIENT** foam for the pipeline market.

TECH DATA REPORT

Physical Properties

Density Pcf In-Place	2.4-2.6
Compressive Strength	36 psi
Shear Strength	32 psi
Perms / Inch	2.3

**Contact us today for a
competitive quote
(517) 204-4747**



Mark Benaske, President
Mbenaske@rvaluefoam.com

PIPELINERS HALL of FAME NEWS

VOLUME 49
DECEMBER/JANUARY 2021

Published by
 UNIVERSAL NEWS INC.

STAFF

H. M. "Ike" Stemmer
Founder

Universal News, Inc.
Publisher

Tina Bostic
President / Editor
tbostic@pipelinejobs.com

David Bostic
Vice President
davidbostic@pipelinejobs.com

Circulation
circulation@pipelinejobs.com

Juan Fitzmaurice
Art Director
jfitzmaurice@gmail.com

Advertising Representative
Tina Bostic 800/790-5551

Editorial & Production Offices
Universal News, Inc.
P. O. Box 227
Fischer, TX 78623
Phone 800/790-5551
Fax 325/202-2925

www.pipelinejobs.com

PIPELINERS HALL OF FAME NEWS is edited for companies and individuals involved in the pipeline construction industry worldwide. All rights reserved. No part of this publication may be reproduced in any form or by any means, including photocopying, without prior written permission from the publisher. Reprint prices are available upon request.

PIPELINERS HALL OF FAME NEWS is published nine times per year by Universal News, Inc., P.O. Box 227, Fischer, Texas 78623, ph (800)790-5551, fax (325)202-2925 Subscriptions: (Payable in U.S. Funds Only) - First Class Mail - U.S. Only - \$70 for 1 yr. Canada/Mexico - \$80 for 1 yr. - Foreign Air Mail - All Countries - \$110 for 1 yr. - A single copy is \$10.00.



- 10 Houston Clinton**
Accommodates Expansive Equipment
Yard Needs
- 30 The Life Of A Pipeliner**
What Are The Challenges Of Welding
On A Pipeline?

DEPARTMENTS

- 5** Latest Job Reports
- 12** Proposed Projects & Updates
- 29** Heard On The Line
- 32** Pipeline Photos
- 34** Obituaries
- 37** Business Directory



Send your comments,
stories and pipeline photos
to tbostic@pipelinejobs.com

EVENT CALENDAR

2021 APCA Convention
Naples Grande Beach Resort
March 26-31, 2021
Naples, FL

73rd PLCA Convention
The Grand Hyatt Baha Mar
Nassau, Bahamas
April 6-10, 2021

Disclaimer

While readers of this publication receive the benefit of our comments, none of the information contained herein constitutes a recommendation from us. Although we do our very best to provide the most accurate information available, the contents of this publication should be used as a guide and not as official information.

Universal News, Inc., Pipeliners Hall of Fame News or any employee or representative of either organization can not be held responsible for the content, accuracy, or timeliness of information contained in this publication.



Need big iron for your next Pipeline Project?

Call Leslie Equipment Company, they have everything you need with one call.

- Side Booms - 40,000Lb – 220,000 Lb
- Crawlers - 450K-1050K
- Excavators - 16G-870G
- Motor Graders
- ADT Trucks
- Wheel Loaders
- Talbert Trailers
- Vacuworx Lifters
- Prinoth Trucks
- Allu Padding Buckets
- Rammer Hammers
- Prime Tech Mulchers
- Bandit Grinders & Chippers
- Attachments
- And much more.



Sales • Parts • Service • Rentals (888)694-4695
www.lec1.com



LATEST JOB REPORTS

Northern Clearing Inc., ph (715) 682-6646 has been awarded a contract by Precision Pipeline, LLC for the clearing of approximately 233.3 miles of 36-inch pipeline right-of-way in Polk, Clearwater, Hubbard, Wadena, Cass, Crow Wing, Aitkin, St. Louis and Carlton Counties, Minnesota. Headquarters are to be determined. Superintendents are James Junker, Rod Grubisic, Jerry Meyer and Shawn Stephenson. The approximate starting date is to be determined.

Snelson Companies, Inc., ph (360) 856-6511 has been awarded a contract by Duke Energy for anomaly digs on a 16-inch pipeline in Ohio. Headquarters is Newtown, Ohio. Superintendent is Jeff Gregory. The approximate starting date is December 1, 2020.

Capco Contractors, ph (903)657-2699 has been awarded a project for construction of approx. 19 miles of 36-inch pipeline near Kilgore, Texas. Work slated to begin in February 2021.

Capco Contractors, ph (903)657-2699 has been awarded a contract to install approximately 65 miles of 36-inch pipeline near Abilene, Texas. Work slated to begin in February 2021.

Dun Transportation and Stringing, Inc., ph (903) 891-9660 has been awarded a contract by Welspun to offload and stockpile approximately 200 miles of 36-inch pipe in Dawson County, Montana; Madison and Butler Counties, Nebraska; and Brule, Tripp and Jones Counties, South Dakota. Headquarters are the pipe yards. The superintendents are Mike Bruce and Greg Norman. Work is expected to be getting underway.

Dun Transportation and Stringing, Inc., ph (903) 891-9660 has been awarded a contract by Berg Steel Pipe to offload and stockpile approximately 10 miles of 30-inch pipe in Douglas County, Wisconsin. Headquarters is the pipe yard. Superintendent is Dane Hilsabeck. Work is expected to be getting underway.

All-Terrain SkidPro



Reliable Consistent Service!
22,000 miles and
35 million skids
Bundled!

- 20 years of industry experience
- Patented State-of-the-art equipment
- Visit our new website

www.skidproworks.com

Indicate 75 on Reader Information Card

LATEST JOB REPORTS

Enterprise Products will soon be awarding contracts for the extension of the **Acadian Pipeline** system, approximately 86 miles of 30-inch pipeline and 9 miles of 24-inch pipeline. The project will originate near Cheneyville, Louisiana on Enterprise’s Acadian Haynesville Extension to third party interconnects near Gillis, Louisiana. As part of the project, Enterprise also plans to increase capacity on the Acadian Haynesville Extension by adding horsepower at its Mansfield compressor station in De Soto Parish. The project is supported by long-term customer contracts and is expected to begin service in mid-2021. Construction is expected to begin in January 2021.

Southeast Connections, ph (404) 659-1422 has been awarded a project to construct approximately 9 miles of 12-inch pipeline near Rome, Georgia. Work to begin in January 2021.

NextEra is planning the Lowman Pipeline. The Lowman Pipeline is a proposed approximately 51

miles of 16-inch natural gas pipeline in Southwest Alabama that will supply clean-burning natural gas to the Lowman Energy Center, a newly constructed gas fired power plant owned by PowerSouth Energy Cooperative and expected to be in service in mid-2023. Construction is slated for April 2021.

TC Energy Corporation has awarded more than US\$1.6 billion worth of contracts to six major American union contractors to execute pipeline construction across 800 miles in three states in the U.S. on the **Keystone XL Pipeline** in 2021. The six contractors will be directly responsible for hiring more than 7,000 union workers in 2021. When combined with additional 2021 contracts to be announced later, the total number of American union workers constructing Keystone XL in 2021 will exceed 8,000 and \$900 million in gross wages. In total, Keystone XL is expected to employ more than 11,000 Americans in 2021, creating more than \$1.6 billion in gross wages. The companies awarded contracts include **Barnard Pipeline**, ph (530) 669-5810, **Associated Pipeline**,

SOUTHEAST DIRECTIONAL DRILLING

DRILLING WITH PRIDE & EXPERIENCE



SOUTHEAST DIRECTIONAL DRILLING is a leader in the Horizontal Directional Drilling industry, providing specialized directional drilling services to the oil and gas, municipal water / sewer and telecom industries. We have drilled crossings all across the United States, Canada and Trinidad in all soil conditions—Dirt, Clay, Gravel and Rock.

Southeast has successfully installed several hundred crossings totaling over 150 miles of HDD's, including over 35 miles of 42" pipeline crossings.

Southeast's fleet of drilling rigs range from 80,000 lbs to 1.4 million lbs of pullback capacity providing us with the ability to work on any size project, from 6" to 56". We look forward to working with you on your next project.

3117 NORTH CESSNA AVENUE | CASA GRANDE, ARIZONA 85122 | 520-423-2131 | SOUTHEASTDRILLING.COM



Indicate 84 on Reader Information Card

ON CALL



- Reputation**
Darby logo signifies a stellar reputation for more than 35 years providing quality products and service to the pipeline industry worldwide.
- Knowledge**
Stored here are many years of training and experience to apply when dealing with the challenges of onsite mechanical repair.
- Availability**
In the unlikely event of a problem, our service staff stands ready 24/7 to rush aid to wherever you are, whatever your needs.
- Accessibility**
Our service technicians are never more than a phone call away.

You'll probably never need him. But should the unexpected happen, expect a Darby service technician ready, willing and able to come to your aid anytime, anywhere. Along with a quality line of products, we offer experienced, field tested servicemen with the know-how to minimize equipment downtime.



Expect A Higher Standard

PipeBending Machines • Pipe Bending Mandrels • Line-Up Clamps • Roller Cradles
Field Joint Coating • Pipe Facing Machines • Pipeline Supplies

www.darbyequip.com

LATEST JOB REPORTS

ph (713) 789-4311, **Michels Corp.**, ph (920) 583-3132, **Precision Pipeline**, ph (715) 874-4511, **Price Gregory International**, ph (713) 780-7500 and **U.S. Pipeline, Inc.**, ph (281)531-6100.

WHC, Inc., ph (337)837-8765 has been awarded a contract by Phillips 66 for the **H2 Project**. Construction will begin in January 2021 and includes approximately 6 miles of 12-inch land lay and approximately 30 miles of 12-inch marsh lay. Work is in southern Louisiana.

A contract will be awarded soon for the **East Edisto Gas Pipeline** project. The project includes installation a new 14-mile natural gas line from Summers Drive in Dorchester County to Bees Ferry Road in Charleston County, South Carolina. Work is expected to begin in mid-January 2021.

A contract will be awarded soon for a job for **Dominion Energy** for the **T-72 Pipeline**, approximately 11 miles of 12-inch pipeline near Asheville, NC. Work is

expected to begin in January 2021.

Northern Clearing Inc., ph (715) 682-6646 has been awarded a contract by Precision Pipeline, LLC for clearing-related work on approximately 72.1 miles of 36-inch pipeline right-of-way in Polk, Clearwater and Hubbard Counties; approximately 79.7 miles in Hubbard, Wadena, Cass and Crow Wing Counties; approximately 37.6 miles in Cass, Aitkin and St. Louis Counties, and 43.9 miles in St. Louis and Carlton Counties. All work is in Minnesota. The superintendents are James Junker, Jerry Mayer, Rod Grubisic and Shawn Stephenson. Work was set to get underway in November 2020.

WHC, Inc., ph (337)837-8765 has been awarded a project by Florida Gas Transmission for the construction of approximately 1.7 miles of 20-inch pipeline and 1 mile of 122-inch pipeline in Galveston County, Texas. Work will be around San Leon, Texas.

LATEST JOB REPORTS

Atmos Energy was expected to begin construction in November 2020 on approximately 2.5 miles of 30-inch pipeline near Pflugerville, Texas (Line P Carmel Replacement Project). A contract has been awarded to **Capco Contractors**, ph (903)657-2699.

Max Midstream has plans for the **Nighthawk Pipeline**, approximately 21 miles of 24-inch pipeline and the **Blackhawk Pipeline**, approximately 30 miles of 24-inch pipeline. Job will be out for bid soon with construction slated for Spring of 2021.

Work is underway on the **Whistler Pipeline** project. The project includes approximately 450 miles of 42-inch pipeline from Waha, Texas, to the Agua Dulce area in South Texas. Contractors are **Troy Construction, Pumpco, Inc. and Strike Construction**.

EQM Midstream Partners, LP has plans for the **Tri-State Corridor Project**. The project will include approximately 16.7 miles of 16-inch diameter pipeline in Washington County, Pennsylvania

and Brooke County, West Virginia; new receipt interconnects in Washington County, Pennsylvania; a new delivery interconnect to supply a new natural gas-fired, combined-cycle, 830-megawatt power plant in Brooke County, West Virginia. Job will be placed out for bids soon with construction slated for spring 2021.

Exxon reportedly has plans for construction of approx. 190 miles of 8-inch, 10-inch and 12-inch pipeline from around Beaumont, Texas to Mt. Belvieu, TX. Construction is slated for 2021.



“Great opportunities to help others seldom come, but small ones surround us every day.”



PROVIDING
THE BEST
SOLUTIONS
FOR YOUR
PROJECTS
SINCE 1996.



Gwinnup has built a reputation as one of the premier seeding and restoration companies in the nation by offering excellent leadership, experience, and investment in the latest technology — both in equipment and products.

ANY PROJECT. ANY SIZE.

PERMANENT SEEDING • TEMPORARY COVER • WINTER COVER
AERIAL SEEDING • EROSION CONTROL DEVICES • MATTING

Full Service Solutions for the pipeline industry and its demanding terrain.

Visit our website for full capability details.
www.gwinnupsrestoration.com

Indicate 19 on Reader Information Card



GIRARD INDUSTRIES
6531 N. Eldridge Pkwy
Houston, TX 77041-3507, USA
sales@girardind.com

Toll Free: 800.231.2861
Phone: 713.466.3100
Fax: 713.466.8050
www.GirardIndustries.com



Unmatched **Performance** and Proven **Results**

Indicate 24 on Reader Information Card



Houston Clinton Accommodates Expansive Equipment Yard Needs

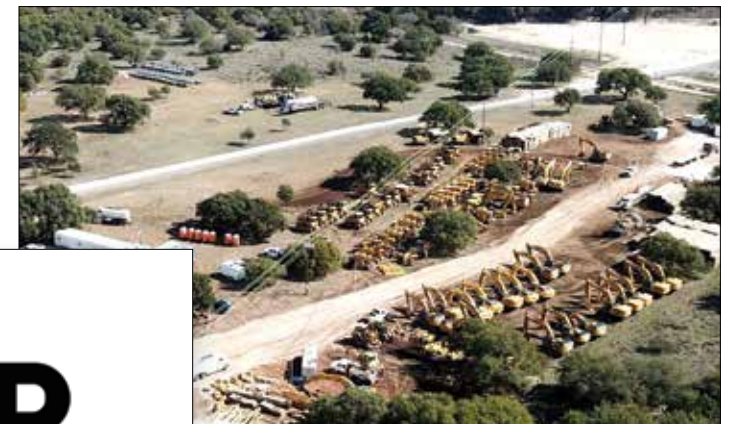
Since last January, Rockford Corporation, as subsidiary of Primoris Services Corporation, has stationed its pipeline heavy construction equipment at the HR Ranch south of Burnet, Texas. As that successful relationship is winding down, Houston Clinton Company is now available to other heavy equipment enterprises seeking similar yard criteria and offers the following specifications:

- Easily recognizable entrance off US Hwy 281 three miles south of Burnet, TX
- Acceleration/deceleration lanes on Hwy 281 satisfying all TX Department of Transportation requirements
- All-weather asphalt road for ingress and egress to utilizable ranch land and covered arena satisfying needs of 20-60 acres
- Readily accessible electricity, water and internet services supporting management trailers for staging, training, program management and operations
- A growing capable workforce in Burnet County and the surrounding area
- Area amenities for employees:
 - Seton Hospital – 1.5 miles
 - Burnet Municipal Airport – 2 miles
 - City of Burnet (population approximately 6,500) – 3 miles
 - City of Marble Falls – 9 miles
 - Highland Lakes area of the Texas Hill Country – 10-15 miles from yard site
 - Available and affordable housing

This property is ideally located near the intersection of US Hwy 281 and Texas Highway 29, fifty miles northwest of Austin, thus situated in the growth corridor. North/South I-35 is less than an hour away, and San Antonio is less than two hours.

More than 70 years ago, Houston Clinton and his son Ramsey moved to Burnet County to quarry limestone aggregate - exceptionally rich in magnesium. The quarry has been in continuous operation since then, and is currently under lease to Lehigh Hanson. Following recent capital expenditures that include an upgraded access road and electrical service to the property, Hanson operates the quarry with state-of-the art equipment and an exceptional attention to ecological detail and sustainability.

Members of the Clinton family continue to live in Burnet and are active in the community – enjoying close relationships with Burnet County officials and representatives. Claude Ramsey Clinton, Jr. (Carcy) and his son Tres and their families live in Burnet County and proudly carry on the Clinton name there with significant involvement in the community, Burnet County and the City of Burnet. It was through these local connections and relationships that Houston Clinton Company was first introduced to Rockford as it sought a heavy equipment staging yard in the county to facilitate their construction of an oil and gas pipeline. For more information, contact Carcy Clinton a carcyc@gmail.com or by phone at (972)345-4282, Houston Clinton Company, P. O. Box 1099, Burnet, TX 78611.



HR
Burnet, Texas



PROPOSED PROJECTS & UPDATES

ANR Pipeline Company has received approval from the FERC to construct the **Grand Chenier Xpress Project**. The proposed project includes facilities in Acadia, Jefferson Davis, and Cameron Parishes, Louisiana: modifications of ANR's existing Eunice Compressor Station in Acadia Parish, Louisiana, to increase the total certificated horsepower (hp) from 24,000 hp to 39,370 hp, and abandonment of an existing reciprocating compressor in place; construction of a new 23,470 hp greenfield compressor station (Mermentau Compressor Station) in Jefferson Davis Parish, Louisiana; modifications of the existing Dresser-Rand compressor unit and installation of 42 feet of aboveground piping at the Grand Chenier Compressor Station in Cameron Parish, Louisiana; and modifications of the Mermentau River GCX Meter Station, including the installation of an additional meter run and related appurtenant facilities in order to increase the delivery capability from 700 million cubic feet per day to 1.1 billion cubic feet per day. ANR anticipates beginning construction in January 2021 and commencing service by January 1, 2022.

ANR Pipeline Company has received FERC approval to commence construction of the **Mermentau Compressor Station** in Jefferson Davis Parish, Louisiana. ANR Pipeline will increase the number and change the horsepower (hp) of gas cooler fan motors from six 40-hp fan motors (240 hp total) to fifteen 15-hp fan motors (225 hp total); and relocate the blowdown silencer closer to the compressor building.

FERC has issued approval for the **Annova LNG Brownsville Project**. **Annova LNG Common Infrastructure, LLC; Annova LNG Brownsville A, LLC; Annova LNG Brownsville B, LLC; and Annova LNG Brownsville C, LLC** are planning to construct, and operate a liquefied natural gas (LNG) export facility in Cameron County, Texas. The project will include a new LNG export terminal capable of producing up to 6.95 million metric tons per year of LNG for export. The LNG terminal would receive natural gas to the export facilities from a third-party intrastate pipeline. Annova anticipates a five-year construction period. The facilities for the project include the following major components: gas pretreatment facilities; liquefaction facilities (six liquefaction trains and six approximately 72,000 horsepower [hp] electric motor-driven compressors); two LNG storage tanks; boil-off gas handling system; flare systems; marine facilities; control, administration, and support buildings; access road; fencing and barrier wall; and utilities (power, water, and communication). Construction is slated for 2022 with a partial in-service date of 2024.

Columbia Gulf Transmission, LLC has submitted an application to the FERC seeking approval to construct the **East Lateral Xpress** project. FERC is preparing an environmental assessment for the project. The project consists of the construction of two new compressor

stations, a new meter station, approximately 8 miles of new 30-inch diameter natural gas pipeline lateral, two new mainline valves (MLVs), tie-in facility, launcher and receiver facilities, and other auxiliary appurtenant facilities all located in St. Mary, Lafourche, Jefferson, and Plaquemines parishes, Louisiana. Upon completion, the project, as proposed, will create 183,000 dekatherms per day (Dth/d) of incremental capacity. Columbia Gulf's proposed 30-inch pipeline lateral and POD Meter Station will interconnect with Venture Global Gator Express, LLC's Gator Express Pipeline, supplying feed gas to Venture Global Plaquemines LNG, LLC's (Venture Global LNG's) liquefied natural gas facility1, all located in Plaquemines Parish, Louisiana. The pipeline facilities associated with the Project will involve the construction and operation of 8.14 miles of new 30-inch-diameter pipeline lateral within Barataria Bay. Pending receipt of all necessary authorizations and permits, Columbia Gulf anticipates mobilization and construction of the 30-inch pipeline lateral and associated aboveground facilities in Barataria Bay to begin by January 31, 2022. Mobilization, clearing, and construction of the Centerville and Golden Meadow compressor stations and associated facilities are also anticipated to begin by January 31, 2022. These constructions start dates are necessary in order to meet an in-service date of January 1, 2023 for the overall project.

Columbia Gulf Transmission, LLC has approved the start of construction start of compressor station facilities in East Carroll, Catahoula, Evangeline, and Rapides Parishes, Louisiana (**Louisiana Xpress Project**). The new Shelburn Compressor Station in East Carroll Parish, Louisiana, which includes installation of two 23,470 horsepower (hp) Solar Turbine Titan 130 natural gas-driven compressors, filter/separators, gas cooling bays, 48-inch-diameter suction and 42-inch-diameter discharge piping, and related appurtenant facilities; the new Red Mountain Compressor Station in Catahoula Parish, Louisiana, which includes installation of two 23,470 hp Solar Turbine Titan 130 natural gas-driven compressors, filter/separators, gas cooling bays, 48-inch suction and 42-inch discharge piping, and related appurtenant facilities; the new Chicot Compressor Station in Evangeline Parish, Louisiana, which includes installation of two 23,470 hp Solar Turbine Titan 130 natural gas driven compressors, filter/separators, gas cooling bays, Lisbon 48-inch suction and 42-inch-diameter discharge piping, and related appurtenant facilities; and cooling bays with associated piping and appurtenant facilities at the existing Alexandria Compressor Station in Rapides Parish, Louisiana.

Illinois has approved the plan for the **Dakota Access Pipeline** to double its capacity from 570,000 bpd to 1.1 million bpd, thus becoming the last state along the pipeline's route to give its consent to the expansion. Dakota Access, which has

PROPOSED PROJECTS & UPDATES

seen a lot of controversy since its inception and initial start-up in 2017, now has the approval of all four states through which it passes—North Dakota, South Dakota, Iowa, and Illinois—to expand its capacity. The pipeline will continue operating at least until the end of 2020 as December 2020 is the earliest time the court will be able to make a decision after reviewing all relevant documentation.

Double E Pipeline, LLC (Double E) has received approval from the FERC for the **Double E Pipeline Project**. Double E seeks authorization to construct and operate an approximately 116.6-mile, 30-inch and 42-inch diameter trunk-line natural gas pipeline; an approximately 16.3-mile, 30-inch diameter lateral; and meters, mainline block valves, launchers and receivers, and other minor facilities at aboveground sites. The project will interconnect with Kinder Morgan's planned Gulf Coast Express and Permian Highway Pipelines, and Energy Transfer Partners' Trans Pecos Pipeline. The Double E Pipeline Project is designed to provide up to 135,000 dekatherms per day of firm capacity to connect growing production areas in the Delaware Basin in southeast New Mexico and west Texas to delivery points near Waha in Reeves and Pecos Counties, Texas. In-service is slated for 2021.

Driftwood LNG LLC and Driftwood Pipeline, LLC has received approval from the FERC for the liquefied natural gas (LNG) export facilities and certain interstate, natural gas transmission pipeline facilities in Evangeline, Acadia, Jefferson Davis, and Calcasieu Parishes, Louisiana. The project would provide gas and processing to produce up to 26 million tonnes per annum of LNG for export. The project facilities include five LNG plants; three LNG storage tanks; three marine berths capable of accommodating LNG carriers of up to 216, each; 74 miles of 48-inch pipeline, 10.6 miles of 42-inch pipeline; 11.3 miles of 36-inch pipeline; and 1 mile of 30-inch lateral pipeline collated with the main pipeline; three compressor stations providing a total of 275,000 horsepower of compression; six pig launchers and receiver facilities, 15-meter stations, and 17 mainline valves.

El Paso Natural Gas Company, LLC has approval from the FERC for the **Carlsbad South Project**. El Paso is underway with construction of approximately 17.1 mile, 16-inch pipeline loop of its existing 16-inch Line No. 3191 located in Eddy County, New Mexico as well as to undertake minor appurtenant facility modifications at an existing compressor station in Lea County, New Mexico. The proposed facilities will allow for transportation service from a natural gas





WELDING TOOLS People you know. Equipment you trust. Experience Sawyer.



SAWYER
MFG COMPANY

sawyerfmfg.com
918-834-2550





MADE IN
USA
TULSA, OK



SAWYER
FABRICATION

CUSTOM METAL FABRICATION
IN TULSA, OK

sawyerfab.com
918-834-2550



CUT - FIT - WELD

Indicate 21 on Reader Information Card

PROPOSED PROJECTS & UPDATES

processing plant located in the Eddy County, New Mexico to EPNG's Keystone Pool. The project is referred as has an estimated cost of \$23.5 million.

Enable Midstream Partners, LP has filed a formal application with the FERC for the **Gulf Run Pipeline** project. A favorable Environmental Assessment has been issued for the project with a final decision staled for January 27, 2021. The new, 134-mile pipeline in Louisiana would run through Red River, DeSoto, Sabine, Vernon, Beauregard, and Calcasieu Parishes, Louisiana. The proposed new pipeline will run from northern Louisiana to the Gulf Coast, helping deliver U.S. resources to international markets with increasing demand. Pending receipt of applicable permits and regulatory approvals, construction would begin by 2022.

The staff of the FERC has issued a Certificate of Public Convenience and Necessity for the **Putnam Expansion Project**, proposed by **Florida Gas Transmission Company, LLC**. The Putnam Expansion Project would consist of the following facilities in Florida: **West Loop**- install 13.7 miles of 30-inch pipeline loop in Columbia and Union Counties; **East Loop**- install 7.0 miles of 30-inch pipeline loop in Clay and Putnam Counties; **Columbia/Union Receiver**

Station Relocation- remove and relocate the existing 30-inch loop pig receiver located at the beginning of the West Loop in Columbia County to a new pig receiver station to be installed at the terminus of the West Loop in Union County; **Clay/Putnam Receiver Station Relocation** - remove and relocate the existing 30-inch-diateter loop pig receiver located at the beginning of the East Loop in Clay County to a new pig receiver station to be installed at the terminus of the East Loop in Putnam County; **Compressor Station (CS) 18**- install new automated valves, over pressure protection device, and station piping at Florida Gas's existing CS 18 in Orange County, Florida. The planned in-service is April 2022.

Gulf South Pipeline Company, LP has received FERC approval for their **Lamar County Expansion Project** that would provide about 200,000 dekatherms of natural gas per day to Cooperative Energy's generation facility in Lamar County, Mississippi. Gulf South proposes to construct and operate 3.4 miles of 20-inch-diameter pipeline, a new delivery meter station, and a new 5,000 horsepower compressor station in Lamar and Forrest Counties, Mississippi. The project would allow Gulf South to provide up to 200,000 dekatherms per day of new natural gas firm transportation

PROPOSED PROJECTS & UPDATES

service from Gulf South's existing Index 299 pipeline to Cooperative Energy. This service would be primarily utilized for Cooperative Energy's new 550-megawatt combined cycle gas turbine generation facility. According to Gulf South, the Project would allow Cooperative Energy's power plant to switch from coal to natural gas as a power source. If approved, the project is slated for construction in the 4th quarter of 2020.

Gulf South has filed a notice with the FERC proposing to replace four reciprocating compressor units totaling 13,200 horsepower with one, 13,058 horsepower Solar Mars 100 compressor unit located at Gulf South's Marksville Compressor Station in Avoyelles Parish, Louisiana.

Gulfstream Natural Gas System, L.L.C. has received a Certificate of Public Convenience and Necessity to abandon, construct, and/or operate certain natural gas facilities for its **Phase VI Expansion Project** in Mobile County, Alabama, and Manatee County, Florida. Gulfstream proposes to: (1) replace approximately four miles of 36-inch-pipeline in Alabama with thicker-walled pipeline; (2) install additional compression facilities and uprate the maximum allowable operating pressure (MAOP) on part of its system; and (3)

construct metering and auxiliary facilities and appurtenances. Specifically, Gulfstream proposes to conduct the following activities in Alabama and Florida: install one 16,000 horsepower (HP) gas-fired turbine driven compressor unit and related appurtenances at Gulfstream's existing Compressor Station 410 in Mobile County, Alabama; uprate the maximum allowable operating pressure (MAOP) of the approximately 55-mile, 36-inch segment of pipeline from MP 3.9 in Mobile County, Alabama, to MP 59.0 in offshore federal waters in the Gulf of Mexico from 2,180 pounds per square inch gauge (psig) to 2,296 psig (beyond MP 59.0, the MAOP will remain at the current 2,180 psig); abandon in place approximately four miles of 36-inch onshore pipeline in Mobile County, Alabama, between MP 0.0 and MP 3.9, by cutting and capping each end and filling the line segment with grout; construct and operate approximately four miles of thicker-walled 36-inch pipeline onshore in Mobile County, Alabama, between MP 0.0 and MP 3.9, to accommodate an increase in the MAOP from 2,180 psig to 2,296 psig. This will offset and replace the approximately four-mile segment of pipeline to be abandoned as described in above; construct metering equipment at Gulfstream's existing Compressor Station 420, located in Manatee County, Florida, to manage the gas flow associated with the higher MAOP described



Wishing our
pipeline family a very
Merry Christmas!
and a Happy New Year!

PIPELINERS
HALL of FAME NEWS

"We Sell Service • Service Sells Us • We Spoil Our Customers!"

SALES • SERVICE • RENTALS
www.westernsupplies.com

Augers & Hexes & Boring Heads
Banding & Strapping
Barricades & Flasher • Beveling Bands
Trencher Belt • Beveling Eqpt.
Blocks-Snatch • Belts & Nylon Slings
Brushes • Calipers
Casing Seals & Insulator
Cadwell Cathotic • Chain
Clamps • Rim & Chain • Cups
Disc & Abrasives • Drill Steel
Engineering Supplies
Erosion Control Supplies
Glasses & Goggles • Fencing Materials
Fire Extinguishers • Files
Pipe Fittings, Tee Ells • Flags
Flanges • First Aid Kits • Gauges • Gloves

Hammers • Hard Hats • Hand Cleaner
Hose-Rubber & PVC • Jeep Supplies & Parts
Ladders • Line Finders
Lanterns & Batteries • Lubrication
Eqpt. Lugs & Splicers • Levels
Markers & Pens • Nite Caps

Pigs-Polly, Brush, Cup • Pipe Hooks
Pipe Cutters • Pipe Plugs • Probes
Power Tools • Rags & Burlap Bags
Respirators & Masks • Rockshield
Rope-Sisal & Polly • Rugs-Primer
Sand Blasting Equipment
Tractor Bending Shoe
Shrink Sleeves • Sumner Jacks
Sorbent Products • Tape Pipe
Tape Measures • Welding Tents
Testing Eqpt & Charts
Teeth-Ditcher & Hoe • Hand Tools
Torches & Burners • Tarps
Umbrellas • Valves-Ball, Needle Etc.
Victolic • Victor Eqpt. • Water Coolers
Welding Supplies • Wire Rope • Wrenches
Wire Rope Fittings • Work Clothes & Carhart

50 Years
Western Supplies Inc.
1970-2020

**WESTERN
SUPPLIES, INC.**

800-215-0873
NIGHT # 940-592-5382

P. O. Box 551
Wichita Falls, TX 76307
PH (940) 855-3401
FAX (940) 855-2918

Indicate 52 on Reader Information Card

14

www.pipelinejobs.com | December/January 2021

December/January 2021 | www.pipelinejobs.com

15

PROPOSED PROJECTS & UPDATES

above; and construct other related auxiliary facilities and appurtenances. Construction is slated for the 4th quarter 2021.

Iroquois Gas Transmission System, L.P. received a positive Environmental Assessment from the FERC and a final decision is expected December 29, 2020 to construct and operate certain natural gas compression and associated facilities. The proposed project is known as the **Enhancement by Compression Project** and would add a total of 125 million cubic feet of natural gas per day of incremental firm transportation service to existing customers in New York. The Project would add one new 12,000 horsepower (hp) compressor unit and associated facilities at each of its existing Athens (Greene County, New York) and Dover Compressor Stations (Dutchess County, New York) and two new 12,000 hp compressor units at its existing Brookfield Compressor Station (Fairfield County, Connecticut). Iroquois also proposes to add cooling and related equipment at its existing Milford Compressor Station (New Haven County, Connecticut). The project would add a total of 48,000 hp of new compression on Iroquois' System.

Jordan Cove Energy Project, L.P. and Pacific Connector Gas Pipeline, LP (PCPG) have received approval from the FERC for their proposed **LNG and Terminal Pipeline**. The project is designed to create a new LNG export point on the Oregon coast to serve overseas markets particularly around the Pacific Rim. The LNG Terminal would be capable of receiving natural gas, processing the gas, liquefying the gas into LNG, storing the LNG, and loading the LNG onto vessels at its marine dock. The planned liquefaction facility would be capable of producing up to 7.8 million metric tons per annum of LNG. PCGP is planning to construct and operate a new, approximately 233-mile long, 36-inch natural gas transmission pipeline crossing through Klamath, Jackson, Douglas, and Coos Counties, Oregon. The pipeline would be designed to transport 1,200,000 dekatherms per day of natural gas to the LNG Terminal from interconnections with the existing Ruby Pipeline LLC and Gas Transmission Northwest LLC systems near Malin, Oregon. The project has a projected in-service date is projected for 2024.

Kern River has submitted a pre-filing request with the FERC for the **Delta Lateral Project**. In order to meet the projected in-service date of May 1, 2024, Kern River plans to request certificate authority no later than February 2022. The proposed facilities, which are subject to change as the pre-filing process progresses, initially include: (1) an approximately 35-mile 24-inch-diameter lateral line; (2) a meter station located near Delta, Utah; and (3) appurtenant facilities, such as a main line block valve, taps and a launcher/receiver.

Kinder Morgan Louisiana has received FERC approval to proceed with construction of certain natural gas compression and meter station facilities in Acadia and Evangeline Parishes, Louisiana (**the Acadiana Project**). Kinder Morgan Louisiana plans to install three new 31,900 hp Solar Titan 250 natural gas-fired turbine driven compressor units at the existing Compressor Station 760 and to construct miscellaneous auxiliary facilities, enabling it to provide an additional 894,000 Dth/d of firm transportation service.

L A Storage, LLC has issued a pre-filing request with the FERC for the **Hackberry Storage Project**. The project would include new high-deliverability natural gas salt dome storage facility and associated compression and piping facilities in Cameron and Calcasieu Parishes, Louisiana. The project will involve the conversion of three existing salt dome caverns and development of one new salt dome cavern on a 159.5-acre parcel owned by LAS. The project will include two 42-inch natural gas pipelines with interconnections with Cameron Interstate Pipeline and the Port Arthur Louisiana Connector Pipeline. A 6.2-mile brine disposal pipeline will be constructed to connect the Project Facility with 4 proposed brine disposal wells. LAS will construct and operate on-site compression facilities and other ancillary facilities related to natural gas storage and transportation. The project will also involve development of six water supply wells on LAS's property. The proposed project will be owned and operated by LAS with a total gas storage capacity of approximately 26 billion cubic feet. LAS proposes to file its formal FERC application in January 2021.

Construction start for the Liberty Pipeline has been deferred. The **Liberty Pipeline** will be a new, approximately 700-mile-long, pipeline of up to 24 inches in diameter transporting light crude oil from Guernsey, Wyoming to Cushing, Oklahoma. It is being reported that construction start could be deferred until 2021.

MPLX has launched a binding open season to assess shipper interest in moving more crude oil from Wyoming to Utah. The open season on the proposed **SLC Core Pipeline System** expansion began on Sept. 20 and will ran through Oct. 23. The pipeline runs from Fort Laramie, Wyoming, to Wahsatch Station, Utah, with connections via third-party pipelines to Salt Lake City and its refineries. The proposed expansion would add 11,000 barrels per day of crude oil capacity and provide access to the Guernsey crude oil market hub. The expansion would boost total SLC Core Pipeline System capacity to 56,000 barrels per day and is expected to begin service in first quarter 2022. The SLC Core Pipeline System is owned by Tesoro Logistics Northwest Pipeline LLC, a subsidiary of Ohio-based MPLX, a subsidiary of Marathon Petroleum.

PROPOSED PROJECTS & UPDATES

National Fuel Gas Supply Corporation and Empire Pipeline, Inc. requested that the FERC grant an extension of time, until December 1, 2024, to complete construction of the **Northern Access 2016 Project** and make the Project available for service. The project consists of approximately 99 miles of new pipeline, primarily 24-inches in diameter, to be constructed in McKean County, Pennsylvania, and Allegany, Cattaraugus, Erie, and Niagara Counties, New York; a new compressor station along Empire's system in Niagara County, New York; and additional compression at National Fuel's existing Porterville Compressor Station in Erie County, New York, as well as new pipeline interconnects and various auxiliary and appurtenant facilities.

North Baja Pipeline, LLC (TC Energy) has received an Environmental Assessment from the FERC for its proposed **North Baja XPress Project**. A final FERC decision slated for December 7, 2020. The project consists of installation of a new 31,900 ISO horsepower Titan 250 compressor unit at its existing Ehrenberg Compressor Station located in La Paz County, Arizona; and modifications to the infrastructure at North Baja's existing El Paso Meter Station in La Paz County, Arizona, and Ogilby Meter Station in Imperial County, California. Construction is expected to start in

October of 2021, with an anticipated in-service date of November 2022.

Northern Natural Gas has issued a Notice of Intent to Prepare an Environmental Assessment from the FERC for its proposed **Northern Lights Expansion 2021** project. Northern plans to have the project facilities in-service November 1, 2021, to meet the contractual in-service date. The facilities are required to meet customer requests received in the open season for Northern Lights 2021 – Ventura North. The proposed facilities, which are subject to change as the pre-filing process progresses, initially include: (1) 8.30 miles of 30- and 36-inch-diameter mainline loops and extensions; (2) 13.30 miles of branch line loops and extensions – ranging in size between 6 and 30 inches in diameter; (3) one new compressor station and modifications at two compressor stations; and (4) modifications at an interconnect; all located in Minnesota. If approved by the FERC, construction is slated for Spring 2021.

Northern Natural Gas Company has filed an application with the FERC for the authorization to construct and operate the **Clifton to Palmyra A-line Abandonment Project**. The proposed Clifton to Palmyra A-Line Abandonment Project

PRICE SUPPLY INC.

SALES, SERVICE & RENTALS TO PIPELINE CONTRACTORS

Abrasives	Clamps-Tipton, KC,	Gas Bags	Pipe Ftgs. & Valves
Branding Material	Dearman	Holiday Detectors	Rockshield
Belts-Brushes	Cold Cutters-2-36	Nite Caps	Tensile Testers
Beveling Equipment	Environmental Products	Pigs	Test Plugs
Chain-Shackles	Generators & Pumps	Pipe Seal & Ins.	Welder Accessories

(337) 837-2466

109 CASON ROAD • BROUSSARD, LA 70518

Nationwide (800) 444-2597 • Fax (337) 837-1482

(877) 575-0007

7330 JULIE FRANCES DRIVE • SHREVEPORT, LA 70518

Nationwide (877) 575-0007 • Fax (318) 687-0741

24-HOUR ANSWERING SERVICE

Indicate 71 on Reader Information Card

PROPOSED PROJECTS & UPDATES

includes the following activities: disconnect the existing 24-inch-diameter M600A and the existing 20-inch-diameter M600J at Northern's existing Clifton Compressor Station; disconnect the existing 24-inch-diameter M590A and the existing 24-inch-diameter M600A at Northern's existing Beatrice Compressor Station; disconnect the existing 24-inch-diameter M590A at Northern's existing Palmyra Compressor Station; abandon in-place 54.3 miles of existing 24-inch-diameter M600A mainline in Gage and Jefferson Counties, Nebraska, and Washington and Clay Counties, Kansas; abandon in-place 19.9 miles of existing 20-inch-diameter M600J mainline in Clay and Washington Counties, Kansas; and 41.7 miles of existing 24-inch-diameter M590A in Otoe, Lancaster, and Gage Counties, Nebraska, between Palmyra and Beatrice, Nebraska; and install a new 15,900-horsepower turbine driven compressor unit at Northern's existing Beatrice Compressor Station near Beatrice, Nebraska. Northern would abandon in-place: 54.3 miles of its existing 24-inch-diameter M600A mainline in Gage and Jefferson Counties, Nebraska and Washington and Clay Counties, Kansas; 19.9 miles of its existing 20-inch-diameter M600J mainline in Clay and Washington Counties, Kansas; and 41.7 miles of its existing 24-inch-diameter M590A mainline in Otoe, Lancaster, and Gage Counties, Nebraska, between Palmyra and Beatrice, Nebraska. The project consists of isolation and abandonment of the A-Line and a segment of the J-Line. To abandon the pipeline in-place, Northern would disconnect and cap the A-Line at six interconnections where it is linked to other system facilities. The dig up and disconnects would take place in Clay County, Kansas, one location in Gage County, Nebraska, and one location in Otoe County, Nebraska. The abandonment of the A-Line would result in the abandonment of the J-Line, which is a loop of the A-Line.

Northern Natural Gas has received a notice of Intent to Prepare an Environmental Assessment from the FERC for the **2021 Auburn A-line Abandonment and Capacity Replacement Project** involving construction, operation, and abandonment of facilities by Northern Natural Gas in Lancaster, Otoe, Johnson, and Nemaha counties, Nebraska. Northern proposes to construct and operate 4.4 miles of new 8-inch pipeline, abandon in-place 31.7 miles of 4- to 6-inch A-line, and install a launcher and a regulation station. The 2021 Auburn A-line Abandonment and Capacity Replacement Project is part of Northern's ongoing modernization efforts and review of vintage and mechanically jointed or acetylene welded pipeline segments. According to Northern, it would modernize Northern's existing system, improve reliability, and enable safer long-term operation of Northern's system.

Northern Natural Gas Company has an application before the FERC to construct and operate new facilities as part of its **Pipeline and Facilities Construction Project**.

Northern intends to abandon in-place approximately 79.21 miles of its 14- and 16-inch South Sioux City to Sioux Falls M561 A-line (A-line) and appurtenances and to replace the abandoned pipeline with approximately 82.23 miles of 12-inch pipeline and appurtenances in Dakota and Dixon counties, Nebraska, and Lincoln and Union counties, South Dakota; install an approximately 3.15-mile, 12-inch tie-over pipeline and appurtenances in Lincoln County, South Dakota; abandon in-place the existing 0.16-mile, 2-inch Ponca branch line and replace it with an approximately 1.87-mile, 3-inch branch line and appurtenances in Dixon County, Nebraska; abandon in-place the existing 0.06-mile, 2-inch Jackson branch line and appurtenances in Dakota County, Nebraska; modify existing and install new above-grade facilities in various counties in Nebraska and South Dakota; and abandon and remove short segments of pipeline in various counties in Nebraska and South Dakota.

Northern Natural Gas Company has filed a request with the FERC to construct, modify, replace and operate certain compression and pipeline facilities, with appurtenances, located in various counties in Minnesota. Northern proposes to: (1) construct an 0.80-mile-long, 24-inch-diameter pipeline extension and an 0.63-mile-long, 24-inch-diameter pipeline loop; (2) replace an 0.08-mile-long, 8-inch-diameter branch line with an equivalent length of 12-inch-diameter pipeline; (3) construct a new 11,153 hp gas-fired turbine greenfield compressor station; (4) install an additional 1,100 hp electric-driven reciprocating compressor unit at its Pierz Compressor Station; and (5) construct various appurtenances, all located within Minnesota.


The staff of the FERC has issued approval for **Northern Natural Gas Company's Palmyra to South Sioux City A-Line Abandonment Project**. The proposed project is in Nebraska and includes the following facilities: abandonment in place of 44.2 miles of 20-inch-diameter and 14.8 miles of 16-inch-diameter mainline in Otoe, Lancaster, Saunders, and Dodge Counties (M581A); abandonment in place of 58.7 miles of 16-inch-diameter mainline in Dodge, Burt, Thurston, and Dakota Counties (M570A); construction of 1.7 miles of new 24-inch-diameter pipeline loop in Otoe County (Palmyra North D-Line Loop); construction of 2.5 miles of new 24-inch-diameter pipeline loop in Dodge County (Fremont North D-Line Loop); construction of a new pig launcher and two valve sites within the existing Palmyra Compressor Station at the beginning of the Palmyra D-Line Loop and a pig receiver and one valve site at the end of the pipeline loop; and construction of a new pig launcher and one valve site within the existing Fremont Compressor Station and one valve site at the end of the Fremont North D-Line Loop. Minnesota Limited has the construction contract for the project.

PROPOSED PROJECTS & UPDATES

PennEast Pipeline has received an Environmental Assessment from the FERC seeking authority for the **PennEast 2020 Amendment Project** involving the construction of approximately 120 miles of 36-inch pipeline to be built in Northampton County, Pennsylvania. PennEast proposes to amend their FERC Certificate Order that was issued on January 19, 2018. PennEast plans to construct the federally approved PennEast Pipeline Project in two separate phases. Phase One would consist of 68 miles of 36-inch pipe, constructed entirely within Pennsylvania and ready to deliver natural gas by November 2021. The Phase Two portion would include the remaining route in Pennsylvania and New Jersey, with a targeted completion of 2023. Additionally, PennEast filed a previous amendment application on February 1, 2019, proposing four modifications to the certificated route in Luzerne, Carbon, Monroe, and Northampton Counties, Pennsylvania. The 2020 Amendment would consist of the following: a new interconnection facility (Church Road Interconnects) in Bethlehem Township, Northampton County, Pennsylvania; a metering and regulation station at approximate milepost (MP) 68.2 of the certificated route; and two separate interconnection and measurement facilities.

The Red Oak project is being deferred due to the current business environment. The project has not been cancelled, but certain work has been paused. Phillips 66 and Plains All American Pipeline have formed a 50/50 joint venture, **Red Oak Pipeline LLC**, and plan to construct the **Red Oak Pipeline** system. The pipeline system will provide crude oil transportation service from Cushing, Oklahoma, and the Permian Basin in West Texas to Corpus Christi, Ingleside, Houston and Beaumont, Texas. Initial service from Cushing to the Gulf Coast is targeted to commence as early as the first quarter of 2021. The Red Oak joint venture will lease capacity in Plains' Sunrise Pipeline system, which extends from Midland to Wichita Falls, Texas. The joint venture plans to construct a new 30-inch pipeline from Cushing to Wichita Falls and Sealy, Texas. From Sealy, the joint venture will construct a 30-inch pipeline segment to Corpus Christi and Ingleside and a 20-inch pipeline segment to Houston and Beaumont. Where feasible, Red Oak plans to utilize existing pipeline and utility corridors and advanced construction techniques to limit environmental and community impact. Plains will lead project construction on behalf of the joint venture, and Phillips 66 will operate the pipeline. The project is expected to cost approximately \$2.5 billion.

BKW, Inc.
Portable Trench Box




BKW has developed a Portable Trench Box to provide a safe environment for the men in the ditch while installing auger anchors. The width of ditch is equal to or less than the ditch required for sacks or weights and ditch depth is the same as cross country pipeline requirements. It consists of a fabricated box designed to straddle the pipe and equipped with a walkway and gang plank. This allows the men to enter box from the bank and climb down to do anchor installation. The box is transported from site to site using the backhoe used to install the anchors.

Contact us at
918-836-6767
bkwinc@aol.com

www.bkwinc.com


Indicate 43 on Reader Information Card

DMI INTERNATIONAL



DMI WORKMANSHIP

BENDING PIPES, BREAKING EXPECTATIONS



PIPELINE EQUIPMENT
WWW.DMIINTERNATIONAL.COM
918-438-2213

Indicate 14 on Reader Information Card

PROPOSED PROJECTS & UPDATES

Port Arthur Pipeline, LLC, a subsidiary of Semptra LNG & Midstream, has received a positive Final Environmental Impact Statement (EIS) from the FERC and a notice that it can begin site preparation for its proposed **Texas Connector** natural gas pipeline in connection with the proposed development of the **Port Arthur Liquefaction Project** by Port Arthur LNG, LLC, and **PALNG Common Facilities** in Jefferson County, Texas. The Final EIS addresses the potential environmental effects of the construction and operation of the following proposed facilities: two liquefaction trains, each with a capacity of 6.73 million tons per annum of LNG for export; three LNG storage tanks, each with a capacity of 160,000 cubic meters; a refrigerant storage area and truck unloading facilities; a condensate storage area and truck loading facilities; a new marine slip with two LNG vessel berths, an LNG vessel and support vessel maneuvering area, and an LNG transfer system; a materials off-loading facility and Pioneer Dock; approximately 38.9 miles of 42-inch-diameter pipeline to bring feed gas from interconnections with Kinder Morgan Louisiana Pipeline LLC, Natural Gas Pipeline Company of America, Houston Pipeline Company LP, Texas Eastern Transmission, LP (TETCO), Florida Gas Transmission Company, LLC, and Golden Triangle Storage, Inc./Centana Intrastate Pipeline,

LLC to the terminal site; approximately 131.3 miles of 42-inch-diameter pipeline to bring feed gas from interconnections with Centana Interstate Pipeline, LP, TETCO, Tennessee Gas Pipeline Company, Market Hub Partners – Egan, Pine Prairie Energy Center, Texas Gas Transmission, LLC, ANR Pipeline Company, and Columbia Gulf Transmission, LLC to the terminal site; three compressor stations; meter stations at the pipeline interconnects; and other associated utilities, systems, and facilities (mainline valves, pig launchers/receivers, contractor yards, access roads, etc.). Construction is expected to begin in the third quarter of 2021, with commercial operations expected to begin in third quarter of 2022. On May 8, 2020, **Port Arthur Pipeline** filed received an Environmental Assessment for the **Louisiana Connector Project**. Port Arthur Pipeline plans to construct, own, and operate additional new proposed Liquefaction Facility south of Port Arthur in Jefferson County, Texas. The Louisiana Connector Project will be capable of delivering approximately 2,000,000 MMBtu per day of natural gas to the Liquefaction Project. The Louisiana Connector Project, along with the Texas Connector Project facilities proposed in this proceeding, will be the primary means of delivery of feed gas to the Liquefaction Project. The anticipated construction start date is 1st quarter of 2021 with in-service

PROPOSED PROJECTS & UPDATES

slated for 3rd quarter 2022. The Louisiana Connector Project will include 131 miles of 42-inch diameter gas pipeline, a new compressor station, interconnection facilities with interstate and intrastate natural gas facilities, and other appurtenant facilities. The proposed Louisiana Connector Project facilities will extend from an interconnect with Columbia Gas Transmission (MP 130.9) located northeast of Eunice, Louisiana in St. Landry Parish through Evangeline, Allen, Beauregard, Calcasieu, and Cameron Parishes in Louisiana and Jefferson County, Texas and terminate at the proposed Liquefaction Facility south of Port Arthur in Jefferson County, Texas. The Louisiana Connector Project, along with the Texas Connector Project facilities proposed in this proceeding, will be the primary means of delivery of feed gas to the Liquefaction Project. Both projects are needed to provide service to the Liquefaction Project and will allow flexible access to multiple supply basins and systems of upstream transporters. Combined, the projects will give more gas sellers access to Port Arthur LNG and Port Arthur LNG access to more supply basins. The proposed **Port Arthur Pipeline Project** would consist of two segments oriented north and south of the proposed liquefaction project. The 27.6-mile northern portion of the proposed pipeline project would extend from Vidor in Orange County,

TX to the proposed liquefaction project, with the majority of the proposed pipeline co-located with existing energy infrastructure rights-of-way. The approximately 7-mile southern portion of the proposed pipeline project would originate in Cameron Parish, Louisiana on the east bank of Sabine Lake and terminate at the Port Arthur Liquefaction Project. The proposed pipeline project would interconnect the Port Arthur Liquefaction Project to various intra- and interstate pipelines, providing access to a number of major U.S. natural gas supply basins. Construction is expected to begin in the third quarter of 2021, with commercial operations expected to begin in third quarter of 2022.

Port Arthur LNG Phase II, LLC (PALNG-II) and PALNG has an application before the FERC seeking authorization to construct and operate new natural gas liquefaction facilities. The proposed project is known as the **Expansion Project** and would add a total of approximately 13.5 million tonnes per annum (MTPA) of liquefaction capacity for export overseas at the Port Arthur LNG Liquefaction Terminal. The Expansion Project would be located on approximately 900 acres near the City of Port Arthur in Jefferson County, Texas, entirely within the previously authorized Port Arthur LNG Liquefaction Terminal site. The Project would include

CPI Pipe & Steel

FAMILY OWNED/OPERATED 140 ACRE FACILITY
20,000 Tons of Inventory

***We Purchase New Surplus
and Used Steel Pipe***

- Longs, Shorts, and Scrap
- Asbestos Coated

Tyler Williams - tyler@cpipipe.com

***Culvert, Casing &
Piling Needs***

***8" - 42" New Surplus
& Used Pipe for Sale***

Chris Anderson - chris@cpipipe.com

Dallas Williams - dallas@cpipipe.com

Visit us at **www.cpipipe.com**
or call us at 405.350.8555

FLUME
Pipe Dealer

Indicate 18 on Reader Information Card


SAFETY IS WHAT WE LIVE FOR.

With safety as our top priority, you can expect us to deliver a quality product, a commitment to our team, and a reputation built on integrity. As a best-in-class pipeline contractor, that's our promise.


M

MINNESOTA LIMITED

AN ARTERA COMPANY



CONNECT WITH US.
Visit us to learn more at www.mnlimited.com or find us on LinkedIn



Indicate 36 on Reader Information Card



NEED MATS ? ? ?

CALL (888) GARNETT



**Top Quality
Hardwood**





Laminated Mats

Solid Mats

Pipeline Skids



GARNETT

WOOD PRODUCTS CO. INC.

On Time Delivery by Truck or Rail

Call 24 Hours a Day: Toll Free

(888) GARNETT
(888) 427-6388

FAX

(417) 867-3242

Evenings

(417) 256-0830

Mark Garnett

markg@garnettwood.com

"HARDWOOD IS WONDERFUL"



Indicate 47 on Reader Information Card

**COMPLETE PIPELINE/GATHERING
CONSTRUCTION SERVICES**



OTIS
eastern service, LLC
WELLSVILLE, NY

2971 STATE ROUTE 417 EAST
WELLSVILLE, NY 14895
PHONE: 585-593-4760

Indicate 48 on Reader Information Card

PROPOSED PROJECTS & UPDATES

two new liquefaction trains (Trains 3 and 4), each with its own gas treatment facilities and capable of producing 6.73 MTPA; and associated utilities and infrastructure related to Trains 3 and 4. Issuance of the Environmental Assessment from the FERC is expected January 21, 2021 with a final decision slated for April 2021.

Portland Natural Gas Transmission System (PNGTS) has received an Environmental Assessment from the FERC for its proposed **Westbrook XPress Project (WXP)**. Adding to PNGTS' existing capacity, WXP will be capable of transporting approximately 124,000 dekatherms a day (Dth/d) to areas where it is in great demand. Enhancing PNGTS' existing capacity through WXP will be achieved via the installation of facilities to compress and cool gas on the PNGTS system, and the modification of an existing meter station, on land adjacent to the existing Westbrook Compressor Station. The facilities at Westbrook are jointly owned by PNGTS and Maritimes & Northeast Pipeline (MNE), and operated by M&N Operating Company, LLC (MNOC). The proposed project is anticipated to be completed in three phases, with the last expected to go into service by November 1, 2022. All work will be conducted on or adjacent to the existing station. Construction will only be

associated with Phase II, which is slated to be placed into service in 2021.

RH Energytrans, LLC has requested and received approval to delay its in-service date for the **Risberg Line Project** until December 2022. The project consists of the conversion of 31.6 miles of existing 8-inch and 12-inch natural gas gathering pipeline to transmission service, construction of 28.3 miles of new 12-inch pipeline, conversion of the existing Countyline Compressor station from gathering to transmission service, and construction of a new compressor station at Meadville, PA.

Rio Bravo Pipeline, LLC has received a Notice of Intent to Prepare an Environmental Assessment of the **Rio Bravo Pipeline Amendment Project**. The Assessment is expected in December 2020 with a final decision set for March 2021. Rio Bravo requests authorization to, among other things, modify individual units at Compressor Station 1; eliminate Compressor Stations 2, 3 and two interconnect booster stations; eliminate certain measurement facilities; change the maximum allowable operating pressure of the pipelines and header system, and increase the diameter of the first pipeline from 42 inches to 48 inches, resulting in an

PROPOSED PROJECTS & UPDATES

increase in the mainline design capacity on the first pipeline from 2.25 Bcf/d to 2.6 Bcf/d. Rio Bravo is not proposing a change to the Project's total certificated design capacity of 4.5 Bcf/d.

Spire Storage West, LLC (Spire Storage) has received notice from the FERC that it will prepare an environmental document for the construction and operation of facilities in Uinta, Wyoming. The **Clear Creek Expansion Project** would consist of the following facilities: four compressor units at the Clear Creek Plant; a tank storage and natural gas liquids fueling equipment facility on an existing pad; 11 new injection/withdrawal wells, one new water disposal well, and associated lines; approximately 10.6 miles of 20-inch-diameter pipeline; approximately 3.5 miles of 4,160-volt powerline; and other related appurtenances.

TC Energy reported that Canadian indigenous group Natural Law Energy will invest up to C\$1 billion (\$763.77 million) in its Keystone XL oil pipeline. **Keystone XL (KXL)** would carry 830,000 barrels per day of crude from Alberta to the U.S. Midwest. It has faced a decade of opposition from U.S. landowners, environmental groups and tribes. Some indigenous groups oppose pipeline projects, but

other Canadian First Nations have invested in the industry to share in profits and jobs. The investment by Natural Law Energy, a coalition of five First Nations, comes with KXL construction well underway in Canada.

TC Energy Corporation announced that it will move forward with its **Wisconsin Access Project** to increase natural gas capacity, improve reliability, and reduce emissions on a highly utilized segment of its ANR Pipeline system. The US\$0.2 billion project will provide approximately 72 million cubic feet per day of firm transportation service under long-term contracts to utilities serving the Midwestern United States. All project work will occur on ANR Pipeline's existing facilities in Wisconsin, Illinois, Iowa, Missouri, and Kansas. The Wisconsin Access Project involves meter station upgrades, compressor station modifications for enhanced operational flexibility and emissions-cutting horsepower replacements. The project is targeted to be brought in service in the second half of 2022.

Tennessee Gas Pipeline Company, LLC is placing the **261 Upgrade Project** into service. However, construction in light of the current COVID-19 pandemic and potential scheduling uncertainties that may occur as a result, Tennessee has



Heavy Machinery
918-623-9330
Specializing In
PIPELINE EQUIPMENT & HARDWOOD PRODUCTS
SALES • RENTALS • PARTS • SERVICE

CLINT MEADORS
OWNER/OPERATOR
405-202-1533
CLINT@CMHM.COM

CASEY LOWE
MANAGER
918-716-8268
ALOWE@CMHM.COM



Indicate 33 on Reader Information Card



Local, Onsite, or Mail Order RV Skirting.
Stay with us in your RV for 2 days
while we get you skirted.

Curt Miller and the Miller Family
- Since 1994

Email Us
info@rvskirting.com

Google Us
www.rvskirting.com

Call or Text Us
(970)290-6817

Visit Us
20725 Nomad Pl
Peyton CO, 80831

- Warm in the winter...
Cool in the summer
- Save Propane
- Wind Protection
- Prevent Freeze Ups



Indicate ___ on Reader Information Card

PROPOSED PROJECTS & UPDATES

determined that it will delay the planned compressor unit replacement at CS 261 until 2021.

Tennessee Gas Pipeline Company, L.L.C. (TGP), a Kinder Morgan subsidiary, and **Southern Natural Gas Company, L.L.C. (SNG)**, a Delaware limited liability company equally owned by subsidiaries of Kinder Morgan and Southern Company, has received notice from the FERC of a positive Environmental Assessment for the **Evangeline Pass Expansion Project**. The Evangeline Pass Expansion Project is designed to provide up to 1.1 million dekatherms per day (Dth/d) of additional natural gas capacity on Kinder Morgan's TGP and SNG systems in Louisiana and Mississippi. As part of the project, SNG will lease capacity to TGP. The project involves building 9.1 miles of 36-inch diameter pipeline in St. Bernard Parish, Louisiana as well as 4 miles of 36-inch pipeline in Plaquemines Parish, Louisiana. It will also include two new compressor stations located in Clarke County, Mississippi, and St. Bernard Parish, Louisiana, and modifications to existing facilities on both the TGP and SNG systems. Pending receipt of all required permits, construction is planned to begin in the first quarter of 2021, and the

expected in-service date is December 2022.

Texas Eastern Transmission, LP has received a Notice of Intent to Prepare an Environmental Assessment from the FERC for the **Appalachia to Market Project**. A final FERC decision is expected in December 2020. The Appalachia to Market Project would consist of the following facilities and actions, all in Pennsylvania: construction of approximately 0.8 mile of 30-inch-diameter pipeline loop in the same trench as a segment of an abandoned 30-inch-diameter pipe (that would be removed for this project) on the Texas Eastern system in Westmoreland County, PA; one crossover at the existing Bechtelsville pig launcher site in Berks County, PA; one crossover at the existing Uniontown pig-receiver site in Fayette County, PA and other related appurtenances.

Texas Eastern Transmission, LP has an application for its proposed **Middlesex Extension Project** and has received a Notice of Intent to Prepare an Environmental Statement from the FERC to construct, install, own, operate and maintain 1.55 miles of 20-inch-diameter pipeline, a new metering and regulating station, 0.20 miles of 16-inch-diameter interconnecting piping, and related

PROPOSED PROJECTS & UPDATES


appurtenances and ancillary facilities to provide natural gas transportation to interconnects with Transcontinental Gas Pipe Line Company, LLC's (Transco) Mainline system and Transco's existing Woodbridge Lateral for ultimate delivery to the 725-Megawatt natural gas-fueled combined-cycle Woodbridge Energy Center owned by CPV Shore Holdings, LLC and located in Woodbridge Township, New Jersey. In-service date is slated for June 2021.

Texas Eastern has received FERC approval for the **Marshall County Mine Panel 19E and 20E Project** located in Marshall County, West Virginia. Texas Eastern proposes to excavate and elevate pipeline segments of its Lines 10, 15, 25, and 30, that range from 30-inch to 36-inch diameter and to monitor stress and strain levels on the pipelines from potential ground subsidence due to Marshall Coal's scheduled longwall mining activities. Concurrent with pipeline elevation, portions of Lines 10 and 15 would be replaced with new pipe to accommodate a minimum Class 2 design. Texas Eastern would also perform maintenance activities on segments of Lines 25 and 30. Marshall Coal recently informed Texas Eastern that longwall mining activities for Mine Panel 20E may now begin as early as

August of 2021. As such, Texas Eastern would need to commence activities to protect its pipelines that traverse Mine Panel 20E concurrent with planned activities to protect its pipelines that traverse Mine Panel 19E (longwall mining activities in Mine Panel 19E are anticipated to begin in October 2020) in order to ensure timely stabilization of the pipeline segments above ground for the duration of the longwall mining activities scheduled to take place at both Mine Panels. Completion of longwall mining activities and potential subsidence is anticipated in December 2020 for Mine Panel 19E and in October 2021 for Mine Panel 20E. As such, Texas Eastern is seeking to amend the timing set forth in the Application for completion of project activities from October 2021 to October 2022, prior to the start of Texas Eastern's winter heating season.

Texas Eastern Transmission, L.P. has received approval from the FERC and has filed its Implementation Plan with the FERC for its proposed **Cameron Extension Project**. The project would provide 750 million cubic feet per day of firm transportation service. Texas Eastern proposes to construct and operate a new compressor station (East Calcasieu Compressor Station) in Calcasieu Parish, Louisiana. The

THE
SAFE, PROVEN PRODUCT
FOR
INTERNAL PIPE CLEANING



Pipeline
Pigging
Products
INCORPORATED


Distributor Inquiries Invited

(281) 351-6688
(800) 242-7997
FAX: (281) 255-2385
www.pipetigs.com
P.O. Box 692005-300
Houston, TX 77269

Indicate 17 on Reader Information Card

BKW, Inc.
Attention
Gas Gathering System Owners

Replace receiver traps with
BKW PIG SWITCHES & Y's



Smart Pig friendly
ANSI 150 to 2500

P.O. Box 581611
Tulsa, OK. 74158
Ph: 918.836.6767 Fx: 918.836.0141
Email: bkwinc@aol.com

*Patented

www.bkwinc.com

Indicate 43 on Reader Information Card

Excavator Mounted Rock Drill
EXCAVATOR MOUNTED ROCK DRILL



JOHN HENRY
A STEEL DRIVEN MACHINE

JIMCO EQUIPMENT CORPORATION
Home of the JOHN HENRY ROCK DRILL

Charleston, WV | **304.984.0071**
www.JohnHenryRockDrill.com

Indicate 71 on Reader Information Card

new compressor station is comprised of one 30,000 ISO-rated horsepower, natural gas-driven turbine compressor unit and related appurtenances. The project would also consist of three new delivery meter and regulatory stations in Cameron, Beauregard, and Jefferson Davis Parishes, Louisiana; installation of 0.2 miles of 30-inch piping to interconnect with TransCameron Pipeline, LLC's pipeline system in Cameron Parish, Louisiana; installation of miscellaneous equipment at the Gillis Compressor Station in Beauregard Parish, Louisiana; modifications to existing internal pipeline inspection launcher and receiver facilities and two new bypass facilities at existing sites along Texas Eastern's Line 41; and other related auxiliary facilities and appurtenances.

Tennessee Gas Pipeline Company, L.L.C. has received an Environmental Assessment from the FERC to install one 11,107 horsepower gas-turbine driven compressor unit at its existing Compressor Station 321 in Susquehanna County, Pennsylvania; (2) install one 20,500 HP gas-turbine driven compressor unit at its existing Compressor Station 325 in Sussex County, New Jersey; and (3) construct the new 19,000 HP electric-driven Compressor Station 327 in Passaic County, New Jersey (East 300 Upgrade Project). The **East 300 Upgrade Project** would create 115,000 dekatherms per day of firm transportation service. Tennessee estimates the cost of the project to be approximately \$246.3 million.

Haynesville Global Access Pipeline LLC, a subsidiary of **Tellurian Inc.**, is proposing to construct, own and operate an approximately \$1 Billion project with 160 miles of 42-inch pipeline (**Haynes Global Access Pipeline**) and one 23,000 hp compressor station. This proposed pipeline will be capable of transporting upwards of 2 Billion cubic feet of natural gas per day from supply sources originating in the Haynesville / Bossier Shale area.

Tellurian's Permian Global Access Pipeline (PGAP) is proposing to construct, own and operate the **PGAP Project**, an approximate 625-mile long, 42-inch diameter interstate natural gas pipeline originating at the Waha Hub, the gateway for Permian gas heading to market, and terminating near Lake Charles, Louisiana, the heart of US gas market growth. The project is part of Tellurian's proposed Tellurian Pipeline Network that represents a \$7.0 billion investment in U.S. infrastructure, and the creation of approximately 15,000 jobs in Texas and Louisiana. The investment is incremental to the \$15.2 billion investment that Tellurian plans for Driftwood LNG, a proposed liquefied natural gas (LNG) export facility near Lake Charles, Louisiana. Construction could begin as early as 2021 and the pipeline is targeted to be in service as early as 2023.

Transcontinental Gas Pipeline Company, LLC has received a Notice of Intent to Prepare an Environmental Assessment **Regional Energy Access Expansion Project** involving construction and operation of facilities by Transcontinental Gas Pipe Line Company, LLC (Transco) in Bucks, Chester, Delaware, Luzerne, Monroe, Northampton, Wyoming, and York Counties, Pennsylvania; and Burlington, Camden, Gloucester, Hunterdon, Mercer, Somerset, and Warren Counties, New Jersey; and Baltimore County, Maryland. Transco plans to construct and operate approximately 35.8 miles of pipeline loop and one new compressor station, as well as modify existing compressor stations and facilities in Pennsylvania and New Jersey. The project would provide about 760 million standard cubic feet of natural gas per day to multiple delivery points along Transco's existing system in Pennsylvania, New Jersey, and Maryland. According to Transco, its project would provide its customers with enhanced access to Marcellus and Utica Shale natural gas supplies. The project would consist of the following facilities: installation of 22 miles of 30-inch-diameter pipeline loop in Luzerne County, Pennsylvania (Regional Energy Lateral); installation of 13.8 miles of 42-inch-diameter pipeline loop in Monroe County, Pennsylvania (Effort Loop); installation of the new Compressor Station 201 (up to 11,500 horsepower in Gloucester County, New Jersey); installation of a gas turbine or electric motor-driven compressor unit (up to 16,000 hp) at existing Compressor Station 505 in Somerset County, New Jersey; installation of a gas turbine compressor unit (up to an additional 31,871 hp) and modifications to three existing compressors at existing Compressor Station 515 in Luzerne County, Pennsylvania; modifications at existing compressor stations, meter stations, interconnects, and ancillary facilities in Pennsylvania, New Jersey, and Maryland; and installation of ancillary facilities such as mainline valves, communication facilities, and pig launchers and receivers.

Transcontinental Gas Pipe Line Company, LLC has received approval to begin construction of new Compressor Stations 607 and 620, and upgrade Compressor Station 610 associated with the Leidy South Project in Luzerne, Schuylkill, and Columbia Counties, Pennsylvania.

Transcontinental Gas Pipeline Company, LLC has received FERC approval for its proposed **Leidy South Project**. The project would expand Transco's existing pipeline system to enable it to provide an additional 582,400 dekatherms per day of firm transportation service to three shippers and abandon a small portion of its existing facilities. Transco seeks authorization for the construction and operation of approximately 8.7 miles of 36-inch-diameter looping facilities and the related abandonment of 5.8 miles of 23.375-inch pipeline in Clinton County, Pennsylvania; construction and operation of approximately 3.6 miles of

42-inch looping facilities in Lycoming County, Pennsylvania; the addition of 45,87 horsepower (hp) at two existing compressor stations Wyoming and Columbia Counties, Pennsylvania; and construction and operation of two new compressor stations totaling 78,801 hp in Luzerne and Schuylkill Counties, Pennsylvania. The estimated cost of the Project is \$531.12 million. In-service is slated in time for the 2021-22 winter heating season.

Tuscarora Gas Transmission Company has an application before the FERC seeking authorization to increase its certificated capacity on the pipeline by 15,000 dekatherms per day of firm capacity from Malin, Oregon to the Wadsworth Compressor Station (CS) in Washoe County, Nevada, effectuated through modifications to the original design assumption within Tuscarora's engineering models, and replace a 600 horsepower (HP) reciprocating compressor unit with a new 1,380 HP reciprocating compressor unit along with related piping and appurtenant facilities at its existing Wadsworth CS (**Tuscarora XPress Project**). Construction start is anticipated for June 2021.

Venture Global Plaquemines LNG, LLC (Plaquemines LNG) and Venture Global Gator Express, LLC (Gator Express Pipeline) have received FERC Notice to Proceed to construct the process facilities for the **Plaquemines LNG and Project**. Currently, the project start has been delayed until 2021. Plaquemines LNG and Gator Express Pipeline are proposing to construct and operate a new LNG export terminal and associated facilities along the west bank of the Mississippi River in Plaquemines Parish, Louisiana (Terminal) and to construct and operate two new 42-inch diameter natural gas pipeline laterals that will connect the Terminal to the pipeline facilities of Tennessee Gas Pipeline Company and Texas Eastern Transmission. The two parallel and adjacent laterals (11.7 and 15.1 miles long) would be operated at an MAOP of 1,200 pounds per square inch and will be designed to provide firm transportation capacity of approximately 1,970,000 Dt/d to the Terminal. Total cost of the pipeline portion of the project is estimated to be approximately 284 million dollars.

Williams has received approval from the FERC for the **Northeast Supply Enhancement** project. The project is an expansion of the existing Transco natural gas pipeline designed to serve New York markets in time for the 2020/2021 winter heating season. Construction will include: 10.2 miles of 42-inch pipeline loop in Lancaster County, Pennsylvania (the Quarryville Loop); 3.4 miles of 26-inch pipeline loop in Middlesex County, New Jersey (the Madison Loop); 23.5 miles of 26-inch pipeline loop in Middlesex and Monmouth Counties, New Jersey, and Queens and Richmond Counties, New York (the Raritan Bay Loop, which consists of 0.2 mile of pipe in onshore Middlesex County, New Jersey; 6.0 miles of offshore pipe

in New Jersey waters; and 17.3 miles of offshore pipe in New York waters); modification of the existing Compressor Station 200 in Chester County, Pennsylvania; construction of new Compressor Station 206 in Somerset County, New Jersey; and ancillary facilities.

Williams is continuing to conduct environmental surveys for its proposed **Regional Energy Access Project**. The project will include approximately 22.2 miles of 30-inch pipeline in Luzerne County, PA; 13.8 miles of 42-inch looping in Monroe County, PA (Effort Loop); greenfield gas-fired turbine driven or electric motor driven compressor at Compressor Station 201 with approximately 11,500 horsepower (HP) in Gloucester County, NJ; addition of gas-fired turbine driven or electric motor-driven compressor at existing Compressor Station 505 with approximately 16,000 HP in Somerset County, NJ; addition of one gas-fired turbine driven compressor with approximately 31,871 HP and modification of three existing compressors at existing Compressor Station 515 in Luzerne County, PA to support the project; abandonment and replacement of approximately 17,000 HP from five existing gas-fired reciprocating driven compressors with one gas-fired turbine driven compressor with approximately 20,502 HP at existing Compressor Station 515 in Luzerne County, PA; modifications at existing Compressor Station 195 in York County, PA; modifications at existing Compressor Station 200 in Chester County, PA; Modifications to three existing receipt meter stations in PA (Carverton Interconnect & Tie In, Chapin Facility Meter & Regulating [M&R] Station, Williams Field Services Puddlefield M&R Station); modifications to two existing pipeline interconnects in PA (Hildebrandt Interconnect & M&R, Lower Demunds Interconnect); addition of regulation at an existing valve setting on Transco's Mainline "A" in Bucks County, PA (Mainline A Regulator); modifications at the Delaware River Regulator Facility in Northampton, PA; modifications to three delivery meter stations in NJ (Camden M&R Station, Lawnside Meter Station and Mt. Laurel Meter Station); modifications to delivery meter station in PA (Chester M&R Station); modifications to one existing meter station in MD (Beaver Dam M&R Station); increased flow (no modifications) to six delivery meter stations (Centerville, Low Mud Run, Post Road, New Village, Spruce Run and Repaupo M & R Stations); additional ancillary facilities, such as mainline valves (MLVs), cathodic protection, communication facilities, and internal inspection device (e.g., pig) launchers and receivers in PA; and existing, improved, and new access roads and contractor yards/staging areas in PA, NJ, and MD. Subject to FERC's certification of the project and receipt of the necessary permits and authorizations, Transco anticipates construction of the project would commence in fourth quarter 2022 to meet a proposed in-service date of December 1, 2023.

Russ Girling To Retire As President And CEO François Poirier, COO, To Succeed

TC Energy Corporation announced Russ Girling’s retirement as President and Chief Executive Officer and from its Board of Directors effective December 31, 2020. François Poirier, currently Chief Operating Officer, President, Power & Storage and Mexico, will succeed Mr. Girling as President and Chief Executive Officer and will join the Board January 1, 2021. Mr. Girling will assist Mr. Poirier with the transition through February 28.”

On behalf of all Board members, I would like to thank Russ for his invaluable contributions to the Company,” says Siim Vanaselja, Chairman of the Board of Directors. “Over the last decade, he has led TC Energy through a period of unprecedented growth and transformation, including the development of its Liquids pipelines footprint, expansion of its Mexican natural gas pipelines business, the successful US\$13 billion acquisition of Columbia Pipeline Group and advancement of North American LNG.

“In addition to delivering tremendous shareholder value during his tenure, Russ created a culture of excellence in the Company, focused first on the safety of our employees and those in the communities where we operate. His discipline, integrity and strategic leadership have been instrumental in the success our Company has enjoyed. Russ has been a pleasure for the Board to work with and we wish him all the best in his retirement.”

“It has been a privilege and honour to lead TC Energy over the past 10 years and to be part of the extraordinary TC team,” says Girling. “With the wisdom and guidance of the Board and the skills and tenacity of our dedicated employees, we have accomplished many things, delivered the energy critical to millions of people safely and reliably every day, and created significant shareholder value. I am grateful for the opportunity and confident in how the Company is positioned to prosper as global demand for energy continues to grow and transition in the years ahead.”

“Executive development and succession planning are important responsibilities of the Board of Directors,” says Vanaselja. “We are confident in our choice of François as Russ’s successor having seen first-hand his outstanding vision and leadership over six years at TC Energy. He has had exposure to all aspects of our business and consistently shown unwavering commitment to the Company’s long-term success. His integrity, strategic thinking, commercial acumen and bottom-line focus will serve the Company well in the years ahead.”

“I have had the opportunity to work with François over the past six years at TC Energy and for almost two decades in his previous career as an investment banker in our sector. I am confident in his commitment to our values and his tenacity and business acumen to lead the Company as it navigates the changing energy landscape and continues to grow shareholder value,” says Girling.

“I am looking forward to transitioning into this new role and am grateful to Russ for his leadership, discipline and vision,” says Poirier. “The Company’s strong foundation positions it very well for the future, and I’m excited to lead TC Energy to continued success.”

About TC Energy

We are a vital part of everyday life - delivering the energy millions of people rely on to power their lives in a sustainable way. Thanks to a safe, reliable network of natural gas and crude oil pipelines, along with power generation and storage facilities, wherever life happens — we’re there. Guided by our core values of safety, responsibility, collaboration and integrity, our more than 7,300 people make a positive difference in the communities where we operate across Canada, the U.S. and Mexico.

TC Energy’s common shares trade on the Toronto (TSX) and New York (NYSE) stock exchanges under the symbol TRP. To learn more, visit us at TCEnergy.com.

BACKGROUND

Mr. Poirier currently serves as Chief Operating Officer as well as holding the roles of President, Power & Storage and Mexico, overseeing commercial, business development, project, regulatory and the operating functions of each of these businesses.

François was Executive Vice President, Strategy and Corporate Development and the Company’s Chief Risk Officer from 2017 to 2019. In this role he had overall responsibility for corporate strategy, mergers and acquisitions, divestitures, enterprise risk management.

In 2016, as Senior Vice President, Strategy and Corporate Development, Poirier was responsible for the origination, structuring and negotiation of the acquisition of the Columbia Pipeline Group.

Mr. Poirier joined the Company in 2014 as President, Energy East Pipeline. Prior to joining TC Energy, he spent close to 25 years in investment banking, where he ran JP Morgan’s North American Power and Pipeline Investment Banking business in New York and more recently, as founding President of Wells Fargo Securities Canada. During his career he advised TC Energy on matters of strategy, mergers and acquisitions and transaction execution on several occasions.

From 2007 to 2011, Mr. Poirier served as an independent director of Capital Power Income LP.

Mr. Poirier holds a Master of Business Administration from the Schulich School of Business at York University and graduated Magna Cum Laude with a Bachelor of Operations Research from the University of Ottawa.

HEARD ON THE LINE



Tucker Lene has worked hard and his dedication is finally paying off! He recently started his commercial instrument training. He is also in college to become a commercial airline pilot and got all A's & a B's his first semester! His parents, Jerad and Kasey Lene are very proud of his achievements. Congratulations Tucker!

On October 23, 2020, eight pipeline ladies got together for the 1st Annual Ladies Pipeliner Reunion in Marshall, Texas. It started out small with a few of the pipeline women thinking they might like to get together. Then it got BIG! Plans were made for a full weekend of fun! Then it got small again as people began to see it might be difficult for them to attend, with so many factors working against them. But eight beautiful ladies met and had a fantastic and fun time together! Those attending were Paula Wright, Teresa Augustine, Penny McCone, Deborah Shivers, Grace Christmas, Patti Christmas, Jessica Gates and Deborah Pierce.



Miss Rena Akin enjoying some hunting!



Herb Hopkins shared a photo of this Allis Chalmers pocket watch strap. He says it is one of his most prized pipeline treasures.



Rodney and Debi Akin's granddaughter, Marley bagged a nice buck when season opened.



For Sale: 2016 Sierra GMC Extended Cab Truck – Color- White – Duramax Diesel – 1 ton – 3500 series – welding bed on it – 4-wheel drive – 57,900 actual miles - \$35,000 Call (662) 674-5902 or (662) 417-9032

The Life of a Pipeliner: What Are the Challenges of Welding on a Pipeline?

by Jake Zwayer, Product Manager, Engine Drives, Miller Electric Mfg. LLC

Miller is constantly working to develop solutions and equipment that help meet the needs of pipeliners on the right-of-way. We sat down with three pipeline welders to hear their thoughts on the biggest challenges they face and what helps them stay productive on the job.

Critical pipeline welding projects demand highly skilled operators capable of sticking to strict quality and timeline standards. Failing to be a consistent performer can be detrimental, especially in a next-man-up environment.

Hear from three pipeline welders about the issues they face on the right-of-way and what helps them be more productive. Klay Chesham, owner of Chesham Welding in Australia; Tyler Sasse, a 798 pipeliner and owner of Western Welding Academy in Gillette, Wyoming; and Jake Schofield, owner of Schofield Welding in Shelley, Idaho, discuss how they tackle challenges and optimize field welding performance.

What does a typical day look like for you as a pipeliner?

Tyler: I get to the yard and pick up my helper about 6:30 a.m., drink some coffee and attend the safety meeting at 7 a.m. After the safety meeting, the welder foreman tells us where we are going for the day and what we are welding. We load our ice chests with fresh ice, grab any welding rod, grinding wheels or consumables we used from the day before, and hit the right-of-way.

Jake: My day starts at about 5 a.m., usually six days a week. We have a safety meeting at 7 a.m. and then from there we all disperse. They'll string pipe the day before and then one of us will bead and hot pass it, and the other one will fill and cap it. Usually in the morning we're told "Hey, we need to get this many joints done today." You're required to do a lot in a day.

Tyler: The pipeline is a lean, mean operation and there's not a lot of fat, so there's no messing around. I normally work as a bullpen welder, moving around the job as needed — making tie-in welds, repairing welds, welding in the fab yard or helping out the firing line. I normally work 10–12 hours a day.

Klay: I do a lot of street work around Sydney, New Castle and Canberra, the east coast of Australia. We'll do anywhere from a 2-inch gas line to a 22-inch primary pipe. It's either natural gas or water — a lot of big diameter water pipes. On a typical day I get to work for a 6:30 a.m. pre-start meeting, so you go over what's to be done for the day and if there were any issues safety-wise or production-wise the day before. I work on a day rate based on a 10-hour day.

What are your biggest challenges or needs?

Jake: Reliable equipment is the most important. Always having welders that start and perform and you don't have to mess with them all the time. If that thing does not start, I'm in trouble. Arc characteristics and weld consistency are important when it comes to putting in a bead or a hot pass. If it'll just stay the same all day, it's way less of a headache.

Tyler: It is critically important that my machine fires up every single day and is consistent and welds good. If it's inconsistent and all over the place, or if I'm always guessing about where to set it before I strike the arc, that's a problem. There's so much riding on the line for us. In an average year, you'll put about 1,000 hours on your machine, so it's super important that there are no hiccups. Hiccups cost money.

Jake: Everybody's looking for a better puddle. Everybody's looking for something that is going to speed up what they've got going to be able to move faster.

Klay: Reliability is number one. You show up as a contractor, you supply everything, and if your machine goes down when there's a tie-in, that's pretty embarrassing and detrimental to the job.

How important are productivity expectations? What things slow you down and keep you from welding?

Jake: On a pipeline job, we're usually told in the morning "We need to get this many joints done." You're required to do a lot in a day. When I'm working in facilities, the productivity is measured in inches. We're usually required to get about 200 inches a day. It depends on the job and the deadline. If you're really getting crunched on time and guys aren't making their inches, they'll just get rid of you. If the deadline is more lenient, you'll get a couple of warnings.

Tyler: There's a constant comparison between the repair rate and how many weld joints were laid that day. People are keenly aware of what we're getting done or what we're not getting done. You've got to be able to keep up, and you've got to throw clean welds. Welders take a lot of pride in their work. A pipeline is built with many repetitive movements. The productivity depends on your ability to get in the groove with

the other welders and stay there. It's always better to have a machine that helps you stay just a hair ahead of the other guys instead of a machine that holds you back and has you struggling to keep up.

Klay: Productivity is paramount because a lot of my pipelines are branches or bypasses or house connections, so they have to be hot tapped by a drilling team. If we miss that date, to get the drilling team back is another couple of months, so it's very important to make dates that are set out.

Jake: Probably the biggest thing that's going to slow me down is machines not functioning correctly. If I've got to walk back and forth to the machine and change things, that's not going to fly.

Explain what adjustments you make as you're progressing through the stages of a weld joint.

Jake: I want a bead that's crisp but soft at the same time, that just butters on the inside. I don't want it to undercut the inside. If it undercuts anywhere, X-ray is going to see it. After the bead is my hot pass, and I want the hot pass to be really aggressive and pushing the whole time so it eats all the trash out of that weld. It takes care of all the slag and whatever else. After that you have your filler passes, and I want it to stack and put as much metal in it as I can, but at the same time still have enough push on that hot pass and cleaning the whole time. On the cap, I want the puddle to freeze where I put it because if it doesn't, it starts to concave. I tell the helper as I'm doing the bead if things need to be adjusted and he's going to control the heat for me.

Klay: For a 6- to 10-inch pipe, I can leave it on the same amps for the whole weld. Welding up a big spherical T, the root uses a 7016 low hydrogen rod specifically developed for open-root welds. You have to be on the remote for that, because it makes it a lot easier to go up and down. I put it all the way full dig for 7010, 6010, and I find I like a bit more aggressive puddle for downhill. It lets me manipulate my arc length. Your arc length has more influence on the puddle the higher your dig setting is. People might drop the dig down a little bit for fill passes, but I like it all the way up.

Tyler: Generally, we use a 6010 rod for the root pass, and for the hot pass it's 7010 and 8010. When you start that root pass you start at the top. You need a little bit less heat at the top, generally, so you have your helper turn you up or turn you down as you're putting in the root pass. Once you get the root done, the hot pass, the fill and the cap are pretty consistent, in that we're going to need more heat on the top and the bottom and less for the sides, and so it's really important that you have someone to make those adjustments. That's the beauty of a wireless remote. I like a little more dig when I'm putting my root pass in than in my fill and cap.

Are there any challenges or inconveniences with a traditional remote setup?

Jake: They're huge and heavy and you've got to drag the cord out. A few years ago, we had one that went bad and we were in a tie-in and we were strung out probably 70 feet down into a hole. We had to have two guys, one hollering down and the other sitting up by the machine trying to control it. Then by the time they got the heat controlled, I was blowing holes because by the time you can see a puddle starting to get too hot or too cold, you need that adjustment right now.

Tyler: In your traditional remotes, you've got to string out yet another cord for that remote, but the wireless remote absolutely increases productivity. You just grab that thing, put it in your pocket and go down there and start welding. There isn't a whole bunch of setup or messing around you have to do with it.

Why is it important to be a top performer on the job? Is leveraging new technologies an important part of maintaining that status?

Tyler: As a rule of thumb, you get three repairs and then they're going to fire you off that job. If you get run off for bad welds, everybody's going to know it. For Local 798 welders, our quality and productivity, that's what we're proud of. Every time you step up to that plate, you better hit a home run. You put yourself there with the best tools that money can buy. We need to know our welding machine is going to fire up every morning, we need to know it's going to weld the same way every day. The Miller® machine does that; you don't have to worry about it.

Jake: You always want to be called back. When you perform and you make it your priority to make the company money, people notice. When it comes time for a layoff, if you've been the one over there slacking, those other guys see it. They're not going to invite you to the next one because their reputation is on the line as well.

Klay: If you can't produce what you say you can produce, you are compromised in your position. If your machine is reliable and consistent, you can output reliable and consistent results.

Jake: On the technology end of it, if I can trust the machine and it makes me faster and makes me better at what I do, that's a huge stress reliever.

Remote solutions that save time and money

Saving time and hitting critical productivity and quality goals are important in pipeline welding — and in many other field welding applications. The right technologies can help operators save time and money and get the performance they need to get the job done. Learn more about new remote solutions that deliver total control where welders are working.

PIPELINE PHOTOS



PIPELINE PHOTOS





A celebration of life for **Annalee Amelia Schott** was held at Anna's farm, 4350 County Road 25 in Merino on November 20th. at 11:00 AM. Anna was born in Samara, Russia on Dec. 8, 2001. Avery and Lori Schott brought Anna home to her forever family on March 16, 2004. She attended K-8th grade at Community Christian School in Pease, Minnesota where she celebrated a love of God and developed a deep faith. Later the family moved to Merino, CO where Anna attended Merino High School and was involved in FFA, 4-H, Colorado H.S. Rodeo, Colorado Junior Rodeo Assoc., Merino Drama, and Merino Wellness Committee. Anna loved the rodeo community where being in the arena with all the cowboys became her favorite place. She loved helping others and helped coordinate the Merino Blood Drive and Merino plays. Anna will continue to live through family and friends and helping teach each other acts of kindness and compassion. Anna is survived by her parents Lori (Tyner) and Avery Schott; brothers Cameron (Laci) Weddle of Andrews, TX, Caleb (Alie) Weddle of Sterling, nephew Newton Weddle of Andrews, TX; grandparents Judy Schott of Sterling, and John and Dottie Tyner of St. Cloud, MM; numerous aunts, uncles, cousins, family, and friends. She was preceded in death by her grandfather Robert Schott. In lieu of flowers, donations may be made to the Annalee Schott Memorial Fund, care of Tennant Funeral Home, PO Box 1547, Sterling, CO 80751.



Paul James Artz, 59 years of age, of Hildreth, Nebraska, passed away unexpectedly on October 20, 2020, at the Harlan County Health System in Alma, Nebraska. Paul was born October 6, 1961 in Alma, the youngest of four children of Lewis and Barbara (Riley) Artz. Paul was baptized and confirmed at the United Methodist Church in Huntley. Paul attended grammar school in Huntley until the 8th grade, and then graduated from Wilcox High School at Wilcox, Nebraska with the class of 1979. He then pursued higher education at Colby Community College in Colby, Kansas. Following his education at Colby, Paul returned home to the family farm at Huntley, where he farmed with his father, Lewis. On March 1, 1986, he was united in marriage to Robin Dickenson at the United Methodist Church in Huntley and to this union the couple were blessed with one son, Payden. The family made their home in the Huntley area. Paul and Robin farmed in Harlan County until 1995. They then relocated to Hildreth, where Paul continued to be employed in the agriculture industry. In 2007, Paul began a career in the pipeline industry working for Price Gregory International as a fuel truck driver advancing his way forward to his most current position as Assistant Chief Pipeline Inspector for Patriot Inspection Services. He was very proud to work in the pipeline industry and while

working traveled the United States making many friends along the way. While home, Paul cherished time spent with his grandsons: Kason and Kohen. They were the apple of Papa's eye. This year Paul was fortunate to help family friend, Jerry with fall harvest and enjoyed working with the harvest crew. Paul enjoyed hunting with his son, Payden and his friends. He also enjoyed spending time on the family farm. Paul was preceded in death by his father, Lewis, and several aunts and uncles. He leaves to celebrate his life; his wife, Robin Artz of Hildreth; his son, Payden Artz and Brittany and grandsons: Kason and Kohen of Republican City, Nebraska; his mother, Barbara Artz of Minden, Nebraska; brother, Brent Artz and his wife, Holly of Wilcox; sister, Teresa Blank and her husband, Dale of Hildreth; brother, Monte Artz and his wife, Hanah of Georgetown, South Carolina; and a host of nieces and nephews; other relatives; and many treasured friends. A memorial has been established in Paul's honor and kindly suggested to the family to be designated at a later date. The address is 416 Sheppard Ave., Hildreth, NE 68947

Mavis Stanfill Crotts, 86, died September 23, 2020. She was the mother of PLCA Director and Past President Jimmy L. Crotts and his brother Bobby A. Crotts, both of Appalachian Pipeline Contractors, LLP. Mrs. Crotts was co-owner of Fisherman's Wharf Restaurant for 25 years. She was a member of Riverview Baptist Church and was an Eastern Star. Mavis is survived by her sons, Bobby A. Crotts and his wife Nancy of Gallatin, Tennessee, Jimmy L. Crotts and his wife Debra, and Kenneth D. Crotts and his wife Donna, all of Savannah, Tennessee; 10 grandchildren; 15 great-grandchildren; a sister, Norma Leggett and her husband Don of Jackson, Tennessee; and a brother, Durrelle Durham and his wife Carolyn of Germantown, Tennessee. In addition to her mother, Alice Stanfill Durham, and husband, J. Porter Crotts, Mavis was preceded in death by a daughter, Marilyn Crotts Thomasson and a brother, Dewight Durham. Services were held September 26, 2020, in Savannah, Tennessee. Memorial donations may be made to: Darryl Worley Cancer Treatment Center, 935 Wayne Road, Savannah, TN 38372 or Shriners Hospitals for Children, 2900 Rocky Point Drive, Tampa, FL 33607.



Justin Wayne Parks, 40, passed away November 4, 2020 in Buckhannon, West Virginia. Justin was born in Deer River, MN on June 11, 1980 to James and Wanda Parks. Justin had a daughter, Tia Serfling, and spent many years with his beloved girlfriend Tosha and dog Virgil. Justin was raised in Oteneagen on the family farm and attended Deer River School. Justin loved everything about being outdoors such as fishing, hunting, snowmobiling, riding wheelers, logging, and cutting firewood. Justin was a member of the Operating Engineers Local 49 for 22 years.

He made a career out of the pipeline and worked for many contractors: Ozzies, Southeast Directional Drill, Precision Pipeline, Michaels Pipeline, and US Pipeline to name just a few. Justin loved traveling the US chasing the pipeline as a Sideboom operator (and a great one at that) and considered his coworkers as his family. Justin had the gift to put a smile on your face and always made everyone laugh. He was always willing to lend a helping hand, and for a big guy he never wanted to disappoint or have anyone mad at him. He loved his family and his dog Virgil with his whole huge heart, and always made sure he stopped to visit everyone he could when he was back home, and always checked in with a phone call while on the road even if it was only 30 seconds. Everyone who knew him knew he had a million stories to tell. He was preceded in death by his father, James Parks; brother, William Parks; sister, Amanda Parks; paternal grandparents, Roy and Evelyn Parks; maternal grandpa, Wayne Hulbert. Survived include his daughter, Tia (Lance) Serfling; beloved girlfriend, Tosha Poling; mother, Wanda Parks; maternal grandmother, Jean Hulbert; brothers, James (Penny) Parks, George (Diane) Parks, Frank (Connie) Parks, Steve (Rachel) Parks; sisters, Lynn (David) Smith, Kayla (Brett) Parks; many aunts, uncles, nieces, and nephews.



Charles Edward "Cotton" Thrasher, 55, passed away September 6, 2020 at Baptist Medical Center-Attala. Cotton was born December 22, 1964 in Kosciusko, MS to Edward Earl "Dobbin" and Carol Fowler Thrasher. He was welcomed by his sister Sandi. She and Charles started school the same year and graduated in 1982. Sandi went off to college and Charles went to work. He worked for minimum wage for four years and he decided he needed to go back to school and get an education. He moved to Tulsa, OK and enrolled in Tulsa welding school, which he believed was the best welding school in the world. He graduated with a certified welding degree in pipeline welding. He started his long career as a welder affiliated with his beloved 798 local union out of Tulsa, Oklahoma. His career spanned about 35 years for various companies over the years. He married and was blessed with two children Josh and Charlie. They brought along six grandchildren. His most important and most rewarding job was being "Poppa Charlie" to his sweet grands and seeing "Pop" come across that road every day. He loved his only sister Sandi dearly, but called her a drill sargent. She knew just how to motivate him and push his buttons. In spite of the drilling, it was like they had one heartbeat. He dearly loved his home and was so proud of his little plot of land. He never missed but one Christmas in his life and that was when Uncle Sam detained him in the Air Force. He loved his life and lived it well. His pet peeve was he'd hate to die, and nothing was wrong with him. Some of his fun moments was talking to our pastor,

Rev. Larry Harvey, they really enjoyed the fellowship they shared. They always said just what they thought to each other and then have a big laugh. In addition to pipeline construction, he served in the United States Air Force and received a metal for the welding he had done in the Air Force park in Alexandria, LA. He was a mason and a member of the Ebenezer Baptist Church. The loved ones that survive him are his parents, Edward E. "Dobbin" and Carol Thrasher of Ethel, MS; one daughter, Ms. Charlie Thrasher of Ethel, MS; one son, Josh Thrasher of Ethel, MS; one sister, Sandy Pinkard and her husband Rodney of the Center community; six grandchildren, Corbin, Cadin, Zack, Adalee, William, and Kailey. One nephew, Shannon Pinkard and numerous cousins, and a number of aunts and uncles. He was preceded in death by both set of grandparents, Charlie D. and Dorothy Thrasher and Lena and Oakley Fowler. Pallbearers were Jamie Thompson, Donnie Breazeale, Dan Ballard, Sam Bell, David Breazeale, Darron Patterson, Leroy McDougall, Mike Bouchard, Doug Winter and Anthony Fowler. Honorary Pallbearers were Bobby Gentry, John Henry Gentry, Ed McDonald, Ronald Holdiness, Shannon Pinkard, Rodney Pinkard and Josh Thrasher. Memorials may be made to Ebenezer Baptist Church, Shriners Children Home, and Gideons international.



On Monday, November 2, 2020 **Thomas Hines**, devoted husband and father of two children, suddenly passed away at the age of 61. Tom was born on June 9, 1959 in Cedar Rapids Iowa to Don and Shirley Hines. Tom started working at an early age running heavy equipment. After working many years independently with his Father Don and Brothers, Stan, Glenn, Pat and John he moved on to join the International Union of Operating Engineers. During his 30 years in the Union he excelled in the field of mechanics and enjoyed a long partnership with Latex Pipeline construction as his employer. Tom married the love of his life Donna O'Brien March 19, 1977. They raised two children, Tabatha and Andrew. Tom had a passion for his work and family. Tom was the best of us when it came to kindness, loyalty and loving his family with all his soul. His sense of humor and sharp wit was a memorable trait of Tom, and anyone who spent time with him knew he loved a good laugh. Other than a enjoying a good laugh Tom enjoyed his family most. Especially his Grandchildren, Bryce, Zach and Greyson. He loved them with everything he had in his heart. Tom was proceeded in death by his brother Pat. He was survived by his wife Donna, his two children Tabatha (Brian) Hillers and Andrew (Rena) Hines; his Father and Mother, Don and Shirley, his grandchildren, Bryce, Zach and Greyson, his sister Kim, his brothers Stan, Glenn and John, his many nieces and nephews and several cousins.



Tara Sue Brown, daughter of Tommie Joe Brown and Sandra Gail (Millsap) Brown, Tara was born on May 20, 1975 in Ardmore, Oklahoma and passed away on November 1, 2020 in a Ft. Stockton, Texas hospital. An Ardmore resident most of her life, Tara graduated from Kingston High School in the class of 1991. Tara was a dedicated mother and loved spending time with her children. She had worked in the oil and gas industry as a pipeline welding inspector. She was loved by so many people, she was a light that even death can never extinguish. She was most proud of her children and especially her grandsons. She is survived by sons, Aaron Keeton of the home, Jayson Brown and Justyn Brown both of Marlow, OK; daughter, Kaylee Quibodeaux, Ft. Worth, TX; grandsons, Hunter and Kyler of Ft. Worth, TX; father, Tommie Brown of Hugo, OK; mother, Sandra Brown, Ardmore, OK; sisters, Tracy Hess and husband Shane of Ardmore, OK, Christie Brown of Hugo, OK, Taylor Aaron and husband Trevor, Kingston, OK, and Ashley Van Cleave, Wilson, OK; sisters from other misters, Keela Mullennex, Shawnee, OK; Neecy Buchanon Brown, Ardmore, OK; nieces, Lyndsay, Chelsea, Harley S, Harley Y., Dixie, Ashton, Taylon, Kalee, Jadence, Ashley R., Destiny, Denice, Deanna; nephews, Tyler, Logan, Dalton, Dakota, Ethan, Kevin, Kyler, Denver, Landon, Sheldon and TJ; many aunts, uncles, great nieces, great nephews and cousins.



Felipe T. Guerrero, 92, passed away peacefully at his home in Sinton, TX surrounded by his loved ones on October 20, 2020. He was born on February 5, 1928, in Edinburg, TX to Antonio Guerrero and Gregoria Trejo Guerrero. Felipe worked in the oil and gas industry as a pipeline foreman for 40 years before retirement. He was a member of Our Lady of Guadalupe Catholic Church in Sinton. He loved to fish, tinker with all things, and most of all spending time working at the Guerrero Ranch. He was a devoted husband, father, grandfather, and great-grandfather. He was a passionate man that loved his family fiercely. He is survived by wife of 73 amazing years, Maria T. Guerrero; son Felipe Guerrero, Jr. (Mary M.); daughter Aurora Marin (Juan C. Jr.); son Jose Guerrero (Lupe), daughters Julia Guerrero, Tomasa Martinez (Johnnie), Teresa Bradley (Dewit), son Antonio Guerrero (Anita), daughter Laura Schramm (Jon); as well as numerous grandchildren, great-grandchildren and so many other family members.



Mel E. Olson died on November 6, 2020 at his home at Pequaywan Lake, Duluth, Minnesota. He was born to Larena (Volberg) Olson and Orrin Olson on July 29, 1974 at Tioga, North Dakota. Mel married Theresa Hartley in January 1998. Two daughters, Abby Olson and Audrey

Olson, were born of this union. They were later divorced. Then in April 2008, he was married to Dawn (Holte) Larson which added three more children to the family. Mel became a single man again when this marriage ended. Minnesota has been his home for most of this life. He especially enjoyed the Boundary Waters. He took his girls to the Hunting Shack where he taught them to shoot, hunt, fish, golf and 4 wheel at a very young age. Mel was outgoing and had a fun loving personality. He enjoyed competition, among his friends, striving to bag the best hunting trophy of the season. Two of his favorite card games were cribbage and Pinochle. Mel moved to Duluth and began Junior High and continued on to graduate from Duluth Central High in 1992. There he gained lifelong friends. He was on the football team. Those friends always remember their Jersey numbers! After graduation, he returned to North Dakota to attend the North Dakota State University and graduate with a Bachelor's Degree in Civil Engineering in May 1997. Prior to 2012, Mel was employed in various Engineering positions. One of his first positions was head engineer on the Duluth/North Shore Sewer Project; St. Louis County. Mel started his career at UPI in 2012 as Vice President of Construction before taking over as President and CEO. He was instrumental in bringing the Horizontal Directional Drilling Division to UPI. The culture that Mel led and curated resulted in millions of safe manhours. UPI has received numerous awards and recognition for safety under Mel's leadership, including API's Rob Link Award for Safety and Loss Prevention, a Contractor Safety Excellence Award from the Pipe Line Contractors Association, and a special recognition and 2020 Safety Award from BP. Mel was a loving son, brother, and father for his Daughters. He was loved deeply by family and friends and he returned that love in full. Mel always showed up for family occasions no matter how far the drive. He loved music, especially karaoke. He was a great singer. Many evenings he ended with his guitar, singing his favorite songs. Mel is survived by his daughters, Abby Olson and Audrey Olson of Duluth, mother and stepfather, Larena and Gordon Lokken, Burlington North Dakota, sister Melissa (Jeff) Philipp, Horace, North Dakota, brother Mitch Olson, Vergas, Minnesota.



Billy Ray Burney, 77, of Fayetteville, passed away November 22, 2020. Born in Cumberland County, Billy is the son of the late Leighton and Mildred Burney. Along with his parents, he was also preceded in death by his sons, Donovan and Sean Leighton Burney. Billy is survived by his wife, Deborah Burney; son, John Andrew Burney; sister, Louise Burney May; grandsons, Matthew, Noah, Chase, and Joshua Burney; niece, Martha Lynn Langholz; and nephews, Brian Wood and Allen May. Billy lived his life "cowboy strong". He worked all his life as a pipeline welder and dearly loved his family, especially his grandsons. He will be greatly missed by all who knew and loved him.



LARRY G. HOUSTON
President

3207 Dawson Road
Tulsa, OK 74110
(918) 749-Bend
(800) 730-Bend
Fax (918) 834-5910
E-mail: apbcojo@tulsa.com
www.apb-bend.com

PIPE / TUBE BENDING / COILING
FOR INDUSTRY

Indicate 63 on Reader Information Card



**AUGER ANCHORS
BKW, INC.**

**INTEGRITY OF CONCRETE,
EVERY ANCHOR PULL TESTED.
PATENTED.**

P.O. BOX 581611
TULSA, OK 74158
PHONE: 918-836-6767
FAX: 918-836-0141
email: bkwinc@aol.com
website: www.bkwinc.com

Indicate 43 on Reader Information Card



**ILLINOIS
TRUCK
& Equipment**

ADAM SALINAS
NATIONAL ACCOUNT
SALES MANAGER

Mobile: 815-791-6299
Office: 815-941-1900
Fax: 815-941-1486
Email: adam@iltruck.com

320 Briscoe Drive
Morris, Illinois 60450

One Call Rents It All! 815-941-1900 www.iltruck.com

Indicate ___ on Reader Information Card



The Texian Group Inc

THE TEXIAN GROUP, INC. IS A PREMIER MULTI-DISCIPLINE PIPELINE FIELD SERVICES FIRM SPECIALIZING IN PIPELINE INSPECTION AND SAFETY INSPECTION.

The Texian Group, Inc. is proud to announce the opening of our New England office and welcome **Martha Gray** as Northeast Accounts Manager, to our team.

Martha is currently accepting updated resumes for positions in the Oil and Gas industry. Our compensation packages are excellent.

Please send resumes to: martha@texiangroup.com
Martha Gray: 978-855-3262

Indicate 45 on Reader Information Card



SUNBELT EQUIPMENT MARKETING, INC.

Crawler Carriers • Floatation Wagons
Stringing Trailers • Tack Rigs • Skid Racks

John Fry III

2094 Three Lakes Parkway
Tyler, Texas 75703
800-524-2591

Mobile: 281-384-1965
Office: 903-534-7153
Fax: 903-561-1901

jfry@semicrawlers.com
www.semicrawlers.com
College Station • Louisville • Tyler

Indicate 36 on Reader Information Card



Needs Farms
Straw & Hay

Steve Needs
3491 Canal rd.
Millersport, Ohio 43046
740-490-5762
srneeds@hotmail.com

Indicate 19 on Reader Information Card



SKIDS & MATS

NEW or USED For SALE or RENT
35 Saw Mill Locations Throughout the U.S.A.
International Distribution Available
PIPELINE SKID SERVICE
A Texas Limited Partnership

Office # (830)792-5445 - 24 hour
Fax (830)792-5484
P O Box 291528
Kerrville, TX 78029-1528

Bob Malson
Clay Malson
Email - info@pipelineskidservice.com

Indicate 35 on Reader Information Card



**BIHM
Equipment Co., Inc**

Louisiana dealer for
MOROOKA



**B/CO
Inc.**

Mark Holloway
Vice President Operations
225-245-0157
m.holloway@bihmequipment.com
www.bihmequipment.com

Pipeline Division
4247 I-10 Frontage Road
Port Allen, LA 70767

Indicate 70 on Reader Information Card

BENDING ENGINEER
Engineering and Bending Solutions

Over 100 years Combined Crew Experience

Engineers, Bending, Tie-In, Lower-In, Stringing Foremen,
Bending Machine, Sideboom Operators and Laborers Available

DAVID GRIFFITH
131 Jim Arrant Rd.
West Monroe, LA 71292
(318)323-4620 cell (318)548-1919
davidmaxg@hotmail.com

Indicate 78 on Reader Information Card

Sunbelt Tractor & Equipment Company



Kevin Gully
18555 Highway 6 South
College Station, Texas 77845
p. 800-524-5750
f. 979-690-2664
m. 281-732-5365
e. kgully@sunbelttractor.com

sunbelttractor.com

Indicate 73 on Reader Information Card



BIHM
Equipment Co.

RIP MILLER
Rentals & Sales
Pipeline Division

Mailing Address:
P.O. Box 2355
St. Francisville, LA 70775
225.381.3155

4247 I-10 Frontage Rd.
Port Allen, LA 70767
225.278.3700 (cell)
225.381.3156 (fax)
r.miller@bihmequipment.com

Indicate 70 on Reader Information Card

SUNBELT



Shell Sanford
18555 Highway 6 South
College Station, Texas 77845
903-721-4565
ssanford@sunbelttractor.com

SEMI
800-524-2591

Indicate 73 on Reader Information Card



Alvin Chowning - COO
Gineva McKinney - CEO
Mark Chowning - Dispatch Supervisor

Specialized Transport

Office: (303)326-0374
(800)565-7735

www.osagespecial.com

PIPELINE TRANSPORTATION AGENT

Indicate 23 on Reader Information Card



DOZERWINCHPARTS.COM
DBA: Thomson Equipment

Serving customers for over 30 Years




Complete Rebuilds
New/ Used Parts
503-287-9000





Indicate 41 on Reader Information Card



CRESTWOOD TUBULARS, INC.
Visit our web site @ www.crestwoodtubulars.com
e-mail address: info@crestwoodtubulars.com

DISTRIBUTORS OF STEEL PIPE FOR

• Flume / Culvert Pipe
• Boring / Casing Pipe
• Line Pipe / Carrier Pipe

• Fiber Optic Casing
• Piling / Caissons
• New and Used Pipe

Tom Ferguson
800-238-7473 • (314) 842-8604 • (314) 842-9064

We want to buy your surplus/used pipe!
Call, fax, or e-mail your pipe offerings

Indicate 39 on Reader Information Card



Tulsa Tube Bending
Serving others. Building people. Pursuing excellence.

Logan Edmonson
Business Development Manager
ledmonson@ttb.com

4192 S. Galveston
Tulsa, OK 74107
www.ttb.com

Direct (903) 930-3353 • Main (918) 446-4461

Indicate 23 on Reader Information Card



CAN YOUR PIPE HANDLER DO THIS?
IT'S TIME TO GET A GRIP.

Outperform vacuum lifts with the DECKHAND® Pipe Handling System by LaValley Industries.

Securely grip pipe in even the most challenging positions.

Easily handle pipe covered in mud, snow, or ice— even pipe fully submerged in water.

Grip pipe from an off-center position.

Use interchangeable grab arms to confidently adjust to any condition.

Get a firm grip on the future of pipe handling with DECKHAND.



CRC-EVANS®

CRC-Evans.com

38

www.pipelinejobs.com | December/January 2021

CUTTING EDGE FIELD-TO-FINISH SOLUTIONS

Our services are foundational to our values and mission as a company. Building and managing world-class midstream infrastructure does not allow for the treatment of professional services as ancillary to the construction and planning. We have built a focused, full lifecycle expertise around providing these services for you, safely.

OUR EXPERTISE:

- Inspection
- Survey / Mapping / GIS
- Environmental Services
- Pipelines
- Project Management
- Safety and Training
- Technical Support and Training
- Non-Destructive Testing Auditing

EAGLE-INFRA.COM

918.358.5735

EAGLE INFRASTRUCTURE SERVICES

APPLIED
CONSULTANTS, INC.



EAGLE
INFRASTRUCTURE SERVICES

