

VOLUME 48 | OCTOBER/NOVEMBER 2020

PIPELINERS

HALL of FAME NEWS



Western Supplies, Inc.
Celebrates 50th Anniversary



R-VALUE LLC FOAM

www.rvaluefoam.com

Manufactures • Sells • Installs
BUY DIRECT & SAVE

R-Value Foam, LLC has partnered with the leading chemist and manufacturers to provide the most **COST EFFICIENT** foam for the pipeline market.

TECH DATA REPORT

Physical Properties

Density Pcf In-Place	2.4-2.6
Compressive Strength	36 psi
Shear Strength	32 psi
Perms / Inch	2.3

**Contact us today for a
competitive quote
(517) 204-4747**



Mark Benaske, President
Mbenaske@rvaluefoam.com

PIPELINERS HALL of FAME NEWS

VOLUME 48
OCTOBER/NOVEMBER 2020

Published by
 **UNIVERSAL NEWS INC.**

STAFF

H. M. "Ike" Stemmer
Founder

Universal News, Inc.
Publisher

Tina Bostic
President / Editor
tbostic@pipelinejobs.com

David Bostic
Vice President
davidbostic@pipelinejobs.com

Circulation
circulation@pipelinejobs.com

Juan Fitzmaurice
Art Director
jfitzmaurice@gmail.com

Advertising Representative
Tina Bostic 800/790-5551

Editorial & Production Offices
Universal News, Inc.
P. O. Box 227
Fischer, TX 78623
Phone 800/790-5551
Fax 325/202-2925

www.pipelinejobs.com

PIPELINERS HALL OF FAME NEWS is edited for companies and individuals involved in the pipeline construction industry worldwide. All rights reserved. No part of this publication may be reproduced in any form or by any means, including photocopying, without prior written permission from the publisher. Reprint prices are available upon request.

PIPELINERS HALL OF FAME NEWS is published nine times per year by Universal News, Inc., P.O. Box 227, Fischer, Texas 78623, ph (800)790-5551, fax (325)202-2925 Subscriptions: (Payable in U.S. Funds Only) - First Class Mail - U.S. Only - \$70 for 1 yr. Canada/Mexico - \$80 for 1 yr. - Foreign Air Mail - All Countries - \$110 for 1 yr. - A single copy is \$10.00.



10 Western Supplies, Inc. Celebrates 50th Anniversary

DEPARTMENTS

- 5 Latest Job Reports
- 12 Proposed Projects & Updates
- 30 Heard On The Line
- 32 Pipeline Photos
- 34 Obituaries
- 37 Business Directory



Send your comments,
stories and pipeline photos
to tbostic@pipelinejobs.com

EVENT CALENDAR

2021 APCA Convention
Naples Grande Beach Resort
March 26-31, 2021
Naples, FL

73rd PLCA Convention
The Grand Hyatt Baha Mar
Nassau, Bahamas
April 6-10, 2021

Disclaimer

While readers of this publication receive the benefit of our comments, none of the information contained herein constitutes a recommendation from us. Although we do our very best to provide the most accurate information available, the contents of this publication should be used as a guide and not as official information.

Universal News, Inc., Pipeliners Hall of Fame News or any employee or representative of either organization can not be held responsible for the content, accuracy, or timeliness of information contained in this publication.



Need big iron for your next Pipeline Project?

Call Leslie Equipment Company, they have everything you need with one call.

- Side Booms - 40,000Lb – 220,000 Lb
- Crawlers - 450K-1050K
- Excavators - 16G-870G
- Motor Graders
- ADT Trucks
- Wheel Loaders
- Talbert Trailers
- Vacuworx Lifters
- Prinoth Trucks
- Allu Padding Buckets
- Rammer Hammers
- Prime Tech Mulchers
- Bandit Grinders & Chippers
- Attachments
- And much more.



Sales • Parts • Service • Rentals (888)694-4695
www.lec1.com



LATEST JOB REPORTS

Enterprise Products is expected to award soon a contract for the construction of approximately 160 miles of dual pipeline (8-inch and 12-inch) near Bay City, Texas. Work is expected to begin in mid to late October 2020.

UGI Energy has plans to construct approx. 3 miles 8-inch of pipeline near Hershey, Pennsylvania. Work to begin around November 1, 2020.

Minnesota Limited, ph (763) 262-7000 has plans to begin construction November 1, 2020 on approx. 49 miles of 24-inch pipeline in Wisconsin. Drills are scheduled to begin in November 1, 2020 with the mainline to be constructed in 2021.

Atmos Energy plans to begin construction around November 1, 2020 of approximately 2.5 miles of 30-inch pipeline near Pflugerville, Texas (Line P Carmel Replacement Project). Construction bids are being evaluated.

Phillips 66 has plans to construct 36 miles of 12-inch around Lafayette, Louisiana. Approximately 30 miles will be marsh lay and 6 miles will be land lay. Work is slated to begin around November 1, 2020.

Atlanta Gas & Light has plans to construct approximately 7.8 miles 12-inch in Rome, Georgia. Construction started is slated for mid-October 2020.

Southcross Energy has plans to begin construction in October 2020 on 4.6 miles of 16-inch pipeline near Dilley, Texas. A construction contract has not yet been awarded.

Currently out for bid is a job for **Williams Transco** (Leidy Benton Hensel Loop) which will include three pipeline loops - approximately 12 miles of 36-inch and 42-inch pipeline in Pennsylvania.

Atmos Energy is expected to award a contract soon for the construction of approximately 12 miles of 24-inch pipeline near Waco, Texas.

Pe Ben USA, Inc., ph (281) 452-5915 has been awarded a contract by American Cast Iron Pipe Company for the transportation, offloading and yard contraction for approximately 55 miles of 16-inch pipe in Jefferson, Choctaw and Washington Counties, Alabama. Headquarters are Birmingham, Leroy and Silas, Alabama. Superintendent is Tim Gray. The approximate starting date is October 1, 2020.

All-Terrain SkidPro



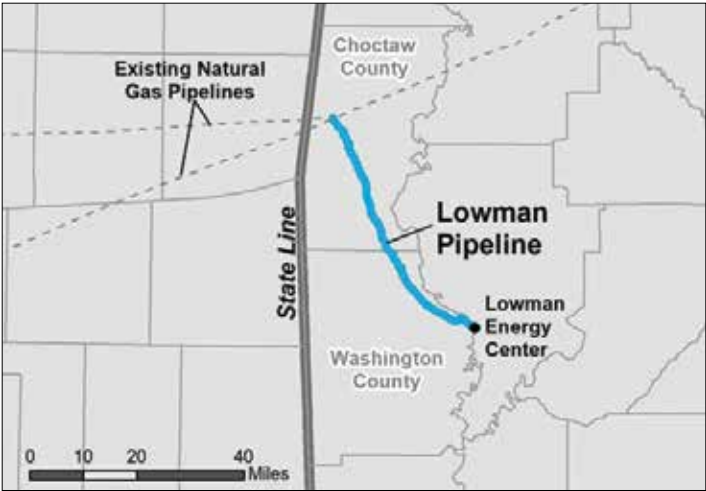
Reliable Consistent Service!
22,000 miles and
35 million skids
Bundled!

- 20 years of industry experience
- Patented State-of-the-art equipment
- Visit our new website

www.skidproworks.com

Indicate 75 on Reader Information Card

LATEST JOB REPORTS



NextEra Energy Resources LLC has plans for a 51-mile pipeline, the Lowman Pipeline, in Alabama. The Lowman Pipeline will receive gas from existing pipelines located in Choctaw County, Alabama, and extend south to the new Lowman Energy Center in Washington County, Alabama. Construction start is planned for the 1st quarter of 2021 with a targeted in-service date in mid-2023, depending on regulatory approvals.

United Piping Inc., ph (800)269-2968 has been awarded a contract by Blue Water Gas to lift and support approximately 1,380 feet of 20-inch pipeline for painting in St. Clair County, Michigan. Headquarters is in Marysville, Michigan. Superintendent is Joel Bailer. The approximate starting date is October 1, 2020.

Minnesota Limited, LLC, ph (763) 262-7000 has been awarded a contract by TC Energy for earthwork modification around an existing pig barrel in Gibson County, Tennessee. Headquarters is in Bradford, Tennessee. Superintendent is Chris Jones. The approximate starting date was September 28, 2020.

T. G. Mercer Consulting Services, Inc., ph (817) 489-7100 has been awarded a contract by Strike for yard preparation and the offloading and racking of approximately 65,000 feet of 24-inch pipe in Jefferson County, Texas. Superintendent is Mario Montgomery. The approximate starting date was September 15, 2020.

Intercon Construction, Inc., p (608) 850-4820 has been awarded a contract by Jimmy Dunn Excavating/WV American Water for the installation of approximately 1,800 feet of

ON CALL

Reputation
Darby logo signifies a stellar reputation for more than 35 years providing quality products and service to the pipeline industry worldwide.

Knowledge
Stored here are many years of training and experience to apply when dealing with the challenges of onsite mechanical repair.

Availability
In the unlikely event of a problem, our service staff stands ready 24/7 to rush aid to wherever you are, whatever your needs.

Accessibility
Our service technicians are never more than a phone call away.

You'll probably never need him. But should the unexpected happen, expect a Darby service technician ready, willing and able to come to your aid anytime, anywhere. Along with a quality line of products, we offer experienced, field tested servicemen with the know-how to minimize equipment downtime.

Expect A Higher Standard

**PipeBending Machines • Pipe Bending Mandrels • Line-Up Clamps • Roller Cradles
Field Joint Coating • Pipe Facing Machines • Pipeline Supplies**

www.darbyequip.com

SOUTHEAST DIRECTIONAL DRILLING

DRILLING WITH PRIDE & EXPERIENCE

SOUTHEAST DIRECTIONAL DRILLING is a leader in the Horizontal Directional Drilling industry, providing specialized directional drilling services to the oil and gas, municipal water / sewer and telecom industries. We have drilled crossings all across the United States, Canada and Trinidad in all soil conditions—Dirt, Clay, Gravel and Rock.

Southeast has successfully installed several hundred crossings totaling over 150 miles of HDD's, including over 35 miles of 42" pipeline crossings.

Southeast's fleet of drilling rigs range from 80,000 lbs to 1.4 million lbs of pullback capacity providing us with the ability to work on any size project, from 6" to 56". We look forward to working with you on your next project.

3117 NORTH CESSNA AVENUE | CASA GRANDE, ARIZONA 85122 | 520-423-2131 | SOUTHEASTDRILLING.COM

Indicate 84 on Reader Information Card

LATEST JOB REPORTS

12-inch pipeline in West Virginia. Headquarters is in Shrewsbury/ East Bank West Virginia. Superintendent is John Olson. The approximate starting date is September, 2020.

U.S. Pipeline, Inc., ph (281) 531-6100 has been awarded a contract by TC Energy (Columbia Gas Transmission) work associated with the abandonment of approximately 16.8 miles of 20-inch pipeline in Jackson, Gallia and Lawrence Counties, Ohio. Headquarters is in Jackson, Ohio. Superintendent is Cliff Sinclair. The approximate starting date was September 21, 2020.

United Piping Inc., ph 800)269-2968 has been awarded a contract by Enbridge for three 24-inch pipeline integrity digs in Ingham County, Michigan. Headquarters is in Dansville, Michigan. Superintendent is Kendal Pilarski. The approximate starting date was September 15, 2020.

Intercon Construction, Inc., p (608) 850-4820 has been awarded a contract by Northern Natural Gas for TBS station removal consisting of 4-inch to 8-inch piping in Nobles County, Minnesota. Headquarters is in Worthington Minnesota. Superintendent is Carl Bubolz. The approximate starting date is September 28, 2020.

WWM Operating, LLC has plans for the BANGL Midland Lateral pipeline - approx. 34 miles of 16-inch new lay in Glasscock and Reagan Counties, Texas. Job is permitted and projected to begin in October 2020.

Unofficial reports indicate that **Energy Transfer** may be planning approximately 75 miles of 30-inch pipeline near the Nederland, Texas area toward the Houston Ship Channel. If the project moves forward, construction could begin in spring 2021.

Progressive Pipeline, ph (601) 693-8777 is underway with construction of approximately 30 miles of 8-inch pipeline near Odem, Texas.

Progressive Pipeline, ph (601) 693-8777 is underway with the Comstock project constructing approximately 30 miles of 30-inch pipeline near Carthage, Texas.

PIPELINE PETE
SAYS

"Good character is the single most important attribute of a successful and worthy life."

RV SKIRTING



Local, Onsite, or Mail Order RV Skirting.
Stay with us in your RV for 2 days while we get you skirted.

Curt Miller and the Miller Family
- Since 1994

Email Us
info@rvskirting.com

Google Us
www.rvskirting.com

Call or Text Us
(970)290-6817

Visit Us
20725 Nomad Pl
Peyton CO, 80831

- Warm in the winter... Cool in the summer
- Save Propane
- Wind Protection
- Prevent Freeze Ups





PROVIDING
THE BEST
SOLUTIONS
FOR YOUR
PROJECTS
SINCE 1996.

Gwinnup has built a reputation as one of the premier seeding and restoration companies in the nation by offering excellent leadership, experience, and investment in the latest technology — both in equipment and products.

ANY PROJECT. ANY SIZE.

PERMANENT SEEDING • TEMPORARY COVER • WINTER COVER
AERIAL SEEDING • EROSION CONTROL DEVICES • MATTING

Full Service Solutions for the pipeline industry and its demanding terrain.

Visit our website for full capability details.
www.gwinnuprestoration.com

Indicate 19 on Reader Information Card



GIRARD INDUSTRIES

GIRARD INDUSTRIES
6531 N. Eldridge Pkwy
Houston, TX 77041-3507, USA
sales@girardind.com

Toll Free: 800.231.2861
Phone: 713.466.3100
Fax: 713.466.8050
www.GirardIndustries.com



Unmatched **Performance** and Proven **Results**

Indicate 24 on Reader Information Card



Western Supplies, Inc. Celebrates 50th Anniversary

50 Years Later, Brenda Wood and Western Supplies, Inc. still serve Pipeline Companies Nationwide

The oil and gas industry has insulated pockets located all over the nation that have remained relatively untouched by economic recessions over the last several years. Though our neighbors to the north in Oklahoma City and those south of us in Fort Worth and Dallas are perhaps more widely known as energy hubs, Wichita Falls sits snugly in the middle of this regional network, similarly basking in the prosperity natural resources afford.

The city's cozy position is the primary reason Brenda Wood moved here with her family 50 years ago. At the time, her husband Joe worked on gas pipelines while Brenda stayed home to raise their three children. Already familiar with the industry, they soon recognized a need for pipeline supplies that could aid booming cities like OKC and DFW and moved the family from Abilene. Thanks to Joe's insider knowledge and Brenda's business acumen—as we all know, every stay-at-home parent is a domestic CEO—it's no surprise their company, Western Supplies, Inc., has done so well since its opening in 1970.

Not to say the beginning was a cakewalk. According to Brenda, it rained a lot those first few years, both literally and figuratively. The Woods began their professional journey hand-in-hand with a business partner, but the relationship cooled after hardship hit and they eventually parted ways. As resourceful people do, the Woods pushed forward, even bringing their children to work each day. Brenda would come to remember the early days with pride. With nostalgia and perhaps some residual anxiety, Brenda can still recall the time J.L. Bush with R.H. Fulton Construction gave her five minutes to find an order.

The Woods' diligence paid off—today Western Supplies, Inc. has nearly 50 employees and an impressive client list that spans the country; field offices in Garnett, Kansas; Troy, Pennsylvania; Millwood, West Virginia; and Monahans, Texas serve resource-rich basins. What began as a modest husband-and-wife venture has blossomed into a family business. Over the years, Brenda Wood has joined organizations like the Distribution Contractors Association and the American Pipeline Contractors Association. She was also nominated for Small Businessperson of the Year in 1999 and recognized as an honorary member of the Pipeline Contractors Association in 2015.

Though she recently stepped back to spend more time with her grandchildren, Brenda continues to play an integral part in the company's daily business dealings. She has made many lifetime friends over the years, both within and without the business world. In true Brenda fashion, these friendships have evolved into more than simple camaraderie—they've become like family members. In addition to her close friendships, one of Brenda's dearest joys has been working side-by-side with her daughter, Beth Sweet, for the past 40 years.

Brenda's stellar work ethic and old-fashioned grit have served her family and the Wichita Falls community well over the last several decades. To this day, Western Supplies' large inventory, with products for sale or rent, makes the company one of the area's most dominant pipeline suppliers. And the woman who started it all reminds us that professional accomplishment, community leadership, and a fulfilling family life can, in fact, go hand-in-hand-in-hand.



"We Sell Service • Service Sells Us • We Spoil Our Customers!"

SALES • SERVICE • RENTALS
www.westernsupplies.com

Augers & Hexes & Boring Heads
Banding & Strapping
Barricades & Flasher • Beveling Bands
Trencher Belt • Beveling Eqpt.
Blocks-Snatch • Belts & Nylon Slings
Brushes • Calipers
Casing Seals & Insulator
Cadwell Cathodic • Chain
Clamps • Rim & Chain • Cups
Disc & Abrasives • Drill Steel
Engineering Supplies
Erosion Control Supplies
Glasses & Goggles • Fencing Materials
Fire Extinguishers • Files
Pipe Fittings, Tee Ells • Flags
Flanges • First Aid Kits • Gauges • Gloves

Hammers • Hard Hats • Hand Cleaner
Hose-Rubber & PVC • Jeep Supplies & Parts
Ladders • Line Finders
Lanterns & Batteries • Lubrication
Eqpt. Lugs & Splicers • Levels
Markers & Pens • Nite Caps

Pigs-Polly, Brush, Cup • Pipe Hooks
Pipe Cutters • Pipe Plugs • Probes
Power Tools • Rags & Burlap Bags
Respirators & Masks • Rockshield
Rope-Sisal & Polly • Rugs-Primer
Sand Blasting Equipment
Tractor Bending Shoe
Shrink Sleeves • Sumner Jacks
Sorbent Products • Tape Pipe
Tape Measures • Welding Tents
Testing Eqpt & Charts
Teeth-Ditcher & Hoe • Hand Tools
Torches & Burners • Tarps
Umbrellas • Valves-Ball, Needle Etc.
Victolic • Victor Eqpt. • Water Coolers
Welding Supplies • Wire Rope • Wrenches
Wire Rope Fittings • Work Clothes & Carhart



**WESTERN
SUPPLIES, INC.**

**800-215-0873
NIGHT # 940-592-5382**

P. O. Box 551
Wichita Falls, TX 76307
PH (940) 855-3401
FAX (940) 855-2918

Indicate 52 on Reader Information Card

PROPOSED PROJECTS & UPDATES

ANR Pipeline Company has received approval from the FERC to construct the **Grand Chenier Xpress Project**. The proposed project includes facilities in Acadia, Jefferson Davis, and Cameron Parishes, Louisiana: modifications of ANR's existing Eunice Compressor Station in Acadia Parish, Louisiana, to increase the total certificated horsepower (hp) from 24,000 hp to 39,370 hp, and abandonment of an existing reciprocating compressor in place; construction of a new 23,470 hp greenfield compressor station (Mermentau Compressor Station) in Jefferson Davis Parish, Louisiana; modifications of the existing Dresser-Rand compressor unit and installation of 42 feet of aboveground piping at the Grand Chenier Compressor Station in Cameron Parish, Louisiana; and modifications of the Mermentau River GCX Meter Station, including the installation of an additional meter run and related appurtenant facilities in order to increase the delivery capability from 700 million cubic feet per day to 1.1 billion cubic feet per day. ANR anticipates beginning construction in January 2021 and commencing service by January 1, 2022.

ANR Pipeline Company has received FERC approval to commence construction of the **Mermentau Compressor Station** in Jefferson Davis Parish, Louisiana. ANR Pipeline will increase the number and change the horsepower (hp) of gas cooler fan motors from six 40-hp fan motors (240 hp total) to fifteen 15-hp fan motors (225 hp total); and relocate the blowdown silencer closer to the compressor building.

FERC has issued approval for the **Annova LNG Brownsville Project**. **Annova LNG Common Infrastructure, LLC; Annova LNG Brownsville A, LLC; Annova LNG Brownsville B, LLC; and Annova LNG Brownsville C, LLC** are planning to construct, and operate a liquefied natural gas (LNG) export facility in Cameron County, Texas. The project will include a new LNG export terminal capable of producing up to 6.95 million metric tons per year of LNG for export. The LNG terminal would receive natural gas to the export facilities from a third-party intrastate pipeline. Annova anticipates a five-year construction period. The facilities for the project include the following major components: gas pretreatment facilities; liquefaction facilities (six liquefaction trains and six approximately 72,000 horsepower [hp] electric motor-driven compressors); two LNG storage tanks; boil-off gas handling system; flare systems; marine facilities; control, administration, and support buildings; access road; fencing and barrier wall; and utilities (power, water, and communication). Construction is slated for 2022 with a partial in-service date of 2024.

Columbia Gulf Transmission, LLC has submitted an application with the FERC seeking approval to construct the **East Lateral Xpress** project. The project consists of the construction of two new compressor stations, a new meter station, approximately 8 miles of new 30-inch diam-

eter natural gas pipeline lateral, two new mainline valves (MLVs), tie-in facility, launcher and receiver facilities, and other auxiliary appurtenant facilities all located in St. Mary, Lafourche, Jefferson, and Plaquemines parishes, Louisiana. Upon completion, the project, as proposed, will create 183,000 dekatherms per day (Dth/d) of incremental capacity. Columbia Gulf's proposed 30-inch pipeline lateral and POD Meter Station will interconnect with Venture Global Gator Express, LLC's Gator Express Pipeline, supplying feed gas to Venture Global Plaquemines LNG, LLC's (Venture Global LNG's) liquefied natural gas facility¹, all located in Plaquemines Parish, Louisiana. The pipeline facilities associated with the Project will involve the construction and operation of 8.14 miles of new 30-inch-diameter pipeline lateral within Barataria Bay. Pending receipt of all necessary authorizations and permits, Columbia Gulf anticipates mobilization and construction of the 30-inch pipeline lateral and associated aboveground facilities in Barataria Bay to begin by January 31, 2022. Mobilization, clearing, and construction of the Centerville and Golden Meadow compressor stations and associated facilities are also anticipated to begin by January 31, 2022. These construction start dates are necessary in order to meet an in-service date of January 1, 2023 for the overall project.

Columbia Gulf Transmission, LLC has received approval from the FERC to construct, operate, and modify certain compressor station facilities in East Carroll, Catahoula, Evangeline, and Rapides Parishes, Louisiana (**Louisiana Xpress Project**). The new Shelburn Compressor Station in East Carroll Parish, Louisiana, which includes installation of two 23,470 horsepower (hp) Solar Turbine Titan 130 natural gas-driven compressors, filter/separators, gas cooling bays, 48-inch-diameter suction and 42-inch-diameter discharge piping, and related appurtenant facilities; the new Red Mountain Compressor Station in Catahoula Parish, Louisiana, which includes installation of two 23,470 hp Solar Turbine Titan 130 natural gas-driven compressors, filter/separators, gas cooling bays, 48-inch suction and 42-inch discharge piping, and related appurtenant facilities; the new Chicot Compressor Station in Evangeline Parish, Louisiana, which includes installation of two 23,470 hp Solar Turbine Titan 130 natural gas driven compressors, filter/separators, gas cooling bays, 48-inch suction and 42-inch-diameter discharge piping, and related appurtenant facilities; and cooling bays with associated piping and appurtenant facilities at the existing Alexandria Compressor Station in Rapides Parish, Louisiana.

Creole Trail has requested to vacate the certificate for the **Creole Trail Expansion Project**. The project would have consisted of approximately 13.9 miles of 42-inch bidirectional pipeline and 24.5 miles of 42-inch pipeline in rate Zone 1 of Creole Trail's system; and approximately 48.5 miles of 42-inch pipeline extension, a compressor station,

PROPOSED PROJECTS & UPDATES

three 36-inch-diameter laterals, one 42-inch-diameter lateral, and four meter and regulating stations in a newly-created rate Zone 2 of Creole Trail's system.

Dominion Energy Transmission, Inc. has received approval from the FERC subject to conditions for the **West Loop Project**. The project will provide 150,000 dekatherms per day of natural gas to a new power plant that is being built in Columbiana County, Ohio to replace retiring coal-fired power and help meet the increasing demand for electricity in the Midwest. The **West Loop Project** consists of: 5.1 miles of 36-inch-diameter natural gas pipeline loop in Beaver County, Pennsylvania; modifications to increase flow capacity at the existing Beaver Compressor Station in Beaver County, Pennsylvania; re-wheel two existing centrifugal compressor units at the existing Carroll Compressor Station in Carroll County, Ohio; install a new pig launcher at the existing Koppel Junction Site and install a new pig receiver for the new Stitt Gate Site in Beaver County, Pennsylvania; install new control valves at the existing Old Petersburg Regulation Facility in Lawrence County, Pennsylvania; and install cathodic protection for the new pipeline at the existing Darlington metering and regulation Station in Beaver County, Pennsylvania. In-service date is slated for July 2021.

Double E Pipeline, LLC (Double E) has received a Notice of Environmental Review from the FERC for the **Double E Pipeline Project**. Double E seeks authorization to construct and operate an approximately 116.6-mile, 30-inch and 42-inch diameter trunk-line natural gas pipeline; an approximately 16.3-mile, 30-inch diameter lateral; and meters, mainline block valves, launchers and receivers, and other minor facilities at aboveground sites. The project will interconnect with Kinder Morgan's planned Gulf Coast Express and Permian Highway Pipelines, and Energy Transfer Partners' Trans Pecos Pipeline. The Double E Pipeline Project is designed to provide up to 135,000 dekatherms per day of firm capacity to connect growing production areas in the Delaware Basin in southeast New Mexico and west Texas to delivery points near Waha in Reeves and Pecos Counties, Texas. If approved, in-service is slated for 2021.

Driftwood LNG LLC and Driftwood Pipeline, LLC has received approval from the FERC for the liquefied natural gas (LNG) export facilities and certain interstate, natural gas transmission pipeline facilities in Evangeline, Acadia, Jefferson Davis, and Calcasieu Parishes, Louisiana. The project would provide gas and processing to produce up to 26 million tonnes per annum of LNG for export. The project





WELDING TOOLS People you know. Equipment you trust. Experience Sawyer.



sawyerfab.com
918-834-2550



sawyerfab.com
918-834-2550

CUSTOM METAL FABRICATION
IN TULSA, OK

CUT • FIT • WELD

Indicate 21 on Reader Information Card

facilities include five LNG plants; three LNG storage tanks; three marine berths capable of accommodating LNG carriers of up to 216, each; 74 miles of 48-inch pipeline, 10.6 miles of 42-inch pipeline; 11.3 miles of 36-inch pipeline; and 1 mile of 30-inch lateral pipeline collated with the main pipeline; three compressor stations providing a total of 275,000 horsepower of compression; six pig launchers and receiver facilities, 15 meter stations, and 17 mainline valves.

El Paso Natural Gas Company, LLC has received an Environmental Assessment from the FERC for the **Carlsbad South Project**. El Paso plans to construct, own and operate an approximately 17.1 mile, 16-inch pipeline loop of its existing 16-inch Line No. 3191 located in Eddy County, New Mexico as well as to undertake minor appurtenant facility modifications at an existing compressor station in Lea County, New Mexico. The proposed facilities will allow for transportation service from a natural gas processing plant located in the Eddy County, New Mexico to EPNG's Keystone Pool. The project is referred as has an estimated cost of \$23.5 million.

El Paso Natural Gas Company LLC has received FERC approval for a new 1,337-foot-long pipeline route realignment for the **Carlsbad South Project** in Eddy County, New Mexico. The new adjusted route would be between Mileposts 2+0038 and 2+1375, moving the pipeline about 230 feet southwest of the originally proposed route.

Enable Midstream Partners, LP has filed a formal application with the FERC for the **Gulf Run Pipeline** project. An Environmental Assessment is expected from the FERC October 24, 2020 with a final decision slated for January 27, 2021. The new, 134-mile pipeline in Louisiana would run through Red River, DeSoto, Sabine, Vernon, Beauregard, and Calcasieu Parishes, Louisiana. The proposed new pipeline will run from northern Louisiana to the Gulf Coast, helping deliver U.S. resources to international markets with increasing demand. Pending receipt of applicable permits and regulatory approvals, construction would begin by 2022.

Enable Gas Transmission, LLC is underway with a new 1.5-mile pipeline that will provide transportation service from EGT's existing Delhi Compressor Station to a tap on EGT's existing Line CP; modify the existing Delhi Compressor Station including abandonment of existing compressor units and installation of a new compressor unit package; permanently remove and relocate an existing compressor unit from EGT's White River Compressor Station to its existing Byars Lake Compressor Station; install auxiliary facilities at EGT's existing FM-63 and FM-65 receiver site; install auxiliary facilities at EGT's existing Amber Junction Compressor Station; and install auxiliary facilities at EGT's existing Beirne Compressor Station. All project work will

be conducted within Clark and Jackson Counties, Arkansas; Richland Parish, Louisiana; and Grady and McClain Counties, Oklahoma.

Enterprise Products Partners L.P. announced that it and certain of its customers have amended agreements that provide Enterprise the ability to use the partnership's existing pipelines to support its crude oil transportation agreements and to cancel the 450,000 barrels per day Midland-to-ECHO 4 crude oil pipeline project ("M2E4"). Generally, the amendments provide for the reduction of near term volume commitments in exchange for extending the term of the agreements. The cancellation of M2E4 will reduce aggregate growth capital expenditures for 2020, 2021 and 2022 by approximately \$800 million. Based on currently sanctioned projects, we expect growth capital expenditures, net of contributions from joint venture partners, for 2020, 2021 and 2022 to be approximately \$2.8 billion, \$1.6 billion and \$900 million, respectively. These estimates do not include capital investments associated with our proposed deep water offshore crude oil terminal ("SPOT"), which remains subject to governmental approvals. We do not expect to receive the approvals for SPOT in 2020. As a result of the cancellation, Enterprise expects to record an impairment charge of approximately \$45 million to its earnings for the third quarter of 2020.

The staff of the FERC has issued a Certificate of Public Convenience and Necessity for the **Putnam Expansion Project**, proposed by **Florida Gas Transmission Company, LLC**. The Putnam Expansion Project would consist of the following facilities in Florida: **West Loop-** install 13.7 miles of 30-inch pipeline loop in Columbia and Union Counties; **East Loop-** install 7.0 miles of 30-inch pipeline loop in Clay and Putnam Counties; **Columbia/Union Receiver Station Relocation-** remove and relocate the existing 30-inch loop pig receiver located at the beginning of the West Loop in Columbia County to a new pig receiver station to be installed at the terminus of the West Loop in Union County; **Clay/Putnam Receiver Station Relocation** - remove and relocate the existing 30-inch-diameter loop pig receiver located at the beginning of the East Loop in Clay County to a new pig receiver station to be installed at the terminus of the East Loop in Putnam County; **Compressor Station (CS) 18-** install new automated valves, over pressure protection device, and station piping at Florida Gas's existing CS 18 in Orange County, Florida. The planned in-service is April 2022.

Guardian Pipeline L.L.C. has filed a prior request with the FERC for authorization to construct and operate the **Graymont Western Lime Project** in Fond du Lac County, Wisconsin. Guardian states the proposed project will consist of a new delivery point connecting Guardian to Graymont Western Lime, Inc., which will measure a gas volume of 5

million cubic feet (MMcf) per day with a potential for expansion up to 13.2 MMcf per day. Guardian estimates the cost of the project to be approximately \$822,000.

Gulf South Pipeline Company, LP has received FERC approval for their **Lamar County Expansion Project** that would provide about 200,000 dekatherms of natural gas per day to Cooperative Energy's generation facility in Lamar County, Mississippi. Gulf South proposes to construct and operate 3.4 miles of 20-inch-diameter pipeline, a new delivery meter station, and a new 5,000 horsepower compressor station in Lamar and Forrest Counties, Mississippi. The project would allow Gulf South to provide up to 200,000 dekatherms per day of new natural gas firm transportation service from Gulf South's existing Index 299 pipeline to Cooperative Energy. This service would be primarily utilized for Cooperative Energy's new 550-megawatt combined cycle gas turbine generation facility. According to Gulf South, the Project would allow Cooperative Energy's power plant to switch from coal to natural gas as a power source. If approved, the project is slated for construction in the 4th quarter of 2020.

Gulfstream Natural Gas System, L.L.C. has received a Certificate of Public Convenience and Necessity to abandon, construct, and/or operate certain natural gas facilities for its **Phase VI Expansion Project** in Mobile County, Alabama, and Manatee County, Florida. Gulfstream proposes to: (1) replace approximately four miles of 36-inch-pipeline in Alabama with thicker-walled pipeline; (2) install additional compression facilities and uprate the maximum allowable operating pressure (MAOP) on part of its system; and (3) construct metering and auxiliary facilities and appurtenances. Specifically, Gulfstream proposes to conduct the following activities in Alabama and Florida: install one 16,000 horsepower (HP) gas-fired turbine driven compressor unit and related appurtenances at Gulfstream's existing Compressor Station 410 in Mobile County, Alabama; uprate the maximum allowable operating pressure (MAOP) of the approximately 55-mile, 36-inch segment of pipeline from MP 3.9 in Mobile County, Alabama, to MP 59.0 in offshore federal waters in the Gulf of Mexico from 2,180 pounds per square inch gauge (psig) to 2,296 psig (beyond MP 59.0, the MAOP will remain at the current 2,180 psig); abandon in place approximately four miles of 36-inch onshore pipeline in Mobile County, Alabama, between MP 0.0 and MP 3.9, by cutting and capping each end and filling the line segment with grout; construct and operate approximately four miles of thicker-walled 36-inch pipeline onshore in Mobile County, Alabama, between MP 0.0 and MP 3.9, to accommodate an increase in the MAOP from 2,180 psig to 2,296 psig. This will offset and replace the approximately four-mile segment of pipeline to be abandoned as described in above; construct metering equipment at Gulfstream's existing Compressor Station 420, located in Manatee County, Florida,

to manage the gas flow associated with the higher MAOP described above; and construct other related auxiliary facilities and appurtenances. Construction is slated for the 4th quarter 2021.

Iroquois Gas Transmission System, L.P. received a Notice of Intent to Issue an Environmental Assessment September 30, 2020 with a final decision expected December 29, 2020 to construct and operate certain natural gas compression and associated facilities. The proposed project is known as the **Enhancement by Compression Project**, and would add a total of 125 million cubic feet of natural gas per day of incremental firm transportation service to existing customers in New York. The Project would add one new 12,000 horsepower (hp) compressor unit and associated facilities at each of its existing Athens (Greene County, New York) and Dover Compressor Stations (Dutchess County, New York) and two new 12,000 hp compressor units at its existing Brookfield Compressor Station (Fairfield County, Connecticut). Iroquois also proposes to add cooling and related equipment at its existing Milford Compressor Station (New Haven County, Connecticut). The project would add a total of 48,000 hp of new compression on Iroquois' System.

Jordan Cove Energy Project, L.P. and Pacific Connector Gas Pipeline, LP (PCPG) have received approval from the FERC for their proposed **LNG and Terminal Pipeline**. The project is designed to create a new LNG export point on the Oregon coast to serve overseas markets particularly around the Pacific Rim. The LNG Terminal would be capable of receiving natural gas, processing the gas, liquefying the gas into LNG, storing the LNG, and loading the LNG onto vessels at its marine dock. The planned liquefaction facility would be capable of producing up to 7.8 million metric tons per annum of LNG. PCGP is planning to construct and operate a new, approximately 233-mile long, 36-inch natural gas transmission pipeline crossing through Klamath, Jackson, Douglas, and Coos Counties, Oregon. The pipeline would be designed to transport 1,200,000 dekatherms per day of natural gas to the LNG Terminal from interconnections with the existing Ruby Pipeline LLC and Gas Transmission Northwest LLC systems near Malin, Oregon. The project has a projected in-service date is projected for 2024.

Kern River has submitted a pre-filing request with the FERC for the **Delta Lateral Project**. In order to meet the projected in-service date of May 1, 2024, Kern River plans to request certificate authority no later than February 2022. The proposed facilities, which are subject to change as the pre-filing process progresses, initially include: (1) an approximately 35-mile 24-inch-diameter lateral line; (2) a meter station located near Delta, Utah; and (3) appurtenant facilities, such as a main line block valve, taps and a launcher/receiver.

PROPOSED PROJECTS & UPDATES

Kinder Morgan Louisiana has received FERC approval from the FERC to construct, modify, and operate certain natural gas compression and meter station facilities in Acadia and Evangeline Parishes, Louisiana (**the Acadiana Project**). Kinder Morgan Louisiana plans to install three new 31,900 hp Solar Titan 250 natural gas-fired turbine driven compressor units at the existing Compressor Station 760 and to construct miscellaneous auxiliary facilities, enabling it to provide an additional 894,000 Dth/d of firm transportation service.

L A Storage, LLC has issued a pre-filing request with the FERC for the **Hackberry Storage Project**. The project would include new high-deliverability natural gas salt dome storage facility and associated compression and piping facilities in Cameron and Calcasieu Parishes, Louisiana. The project will involve the conversion of three existing salt dome caverns and development of one new salt dome cavern on a 159.5-acre parcel owned by LAS. The project will include two 42-inch natural gas pipelines with interconnections with Cameron Interstate Pipeline and the Port Arthur Louisiana Connector Pipeline. A 6.2-mile brine disposal pipeline will be constructed to connect the Project Facility with 4 proposed brine disposal wells. LAS will construct and operate on-site compression facilities and other ancillary facilities related to natural gas storage and transportation. The project will also involve development of six water supply wells on LAS's property. The proposed project will be owned and operated by LAS with a total gas storage capacity of approximately 26 billion cubic feet. LAS proposes to file its formal FERC application in January 2021.

Construction start for the Liberty Pipeline has been deferred. The **Liberty Pipeline** will be a new, approximately 700-mile-long, pipeline of up to 24 inches in diameter transporting light crude oil from Guernsey, Wyoming to Cushing, Oklahoma. It is being reported that construction start could be deferred until 2021.

MPLX has launched a binding open season to assess shipper interest in moving more crude oil from Wyoming to Utah. The open season on the proposed **SLC Core Pipeline System** expansion began on Sept. 20 and will run through noon CDT on Oct. 23. The pipeline runs from Fort Laramie, Wyoming, to Wahsatch Station, Utah, with connections via third-party pipelines to Salt Lake City and its refineries. The proposed expansion would add 11,000 barrels per day of crude oil capacity and provide access to the Guernsey crude oil market hub. The expansion would boost total SLC Core Pipeline System capacity to 56,000 barrels per day and is expected to begin service in first quarter 2022. The SLC Core Pipeline System is owned by Tesoro Logistics Northwest Pipeline LLC, a subsidiary of Ohio-based MPLX, a subsidiary of Marathon Petroleum.

National Fuel Gas Supply Corporation and Transcontinental Gas Pipe Line Company, LLC has received approval from the FERC for its proposed **FM100 Project** and **the Leidy South Project**, proposed by Transco. The FM100 Project would allow National Fuel to modernize a portion of its existing system and provide an additional 330,000 dekatherms per day (Dth/d) of incremental natural gas transportation capacity, all of which is fully subscribed to Transco. The Leidy South Project would provide 582,400 Dth/d of firm natural gas transportation service from shale producing areas in northern and western Pennsylvania to Transco's customers in the eastern United States. National Fuel and Transco are proposing to construct and operate interdependent natural gas infrastructure projects, which are both located entirely within Pennsylvania. The FM100 Project consists of 29.5 miles of new 20-inch-diameter pipeline in McKean and Potter Counties (Line YM58); 1.4 miles of 24-inch-diameter pipeline loop in Potter County (YM224 Loop); 0.4 mile of 12-inch-diameter pipeline in McKean County (Line KL Extension); construction of new Marvindale Compressor Station in McKean County; construction of new Tamarack Compressor Station in Clinton County; construction of the Marvindale Interconnect in McKean County; construction of the Carpenter Hollow overpressurization protection station in Potter County; abandonment in place of a 44.9-mile long portion of the existing 12-inch FM100 Pipeline in Clearfield, Elk, and Potter Counties; abandonment by removal of the existing Costello Compressor Station in Potter County; abandonment by removal of an existing meter station WHP-MS-4317X in Potter County; and installation and abandonment of appurtenances, such as mainline valves and anode beds, associated with the above facilities. The Leidy South Project consists of 3.5 miles of 42-inch pipeline loop in Lycoming County (Benton Loop); 2.5 miles of 36-inch pipeline loop in Clinton County (Hilltop Loop); 6.3 miles of 36-inch meter pipeline loop and related abandonment of a 5.8-mile-long portion of the 23.4-inch Leidy Line A Pipeline (Hensel Replacement) in Clinton County; modification of existing Compressor Station 605 in Wyoming County; modification of existing Compressor Station 610 in Columbia County; construction of new Compressor Station 607 in Luzerne County; construction of new Compressor Station 620 in Schuylkill County; installation of associated facilities such as mainline valves, communication facilities, and pig launchers and receivers, and other appurtenances. Target in-service date for the project is winter 2021.

Natural Gas Pipeline Company of America has received FERC approval and is underway with the natural gas transmission **Gulf Coast Southbound Project**. The project will expand the southbound transportation capacity of Natural's Gulf Coast Mainline System by 300,000 dekatherms per day through modifications at five existing natural gas compressor stations in the state of Texas. As part of the

PROPOSED PROJECTS & UPDATES

project, Natural would conduct the following activities (all locations are in the state of Texas): install one new electric motor driven compressor unit with a rating of 10,000 horsepower, abandon two existing compressor units, and add cooling equipment and a new filter separator at existing Compressor Station 300 in Victoria County; install one Solar Mars 100 turbine with a rating of 15,900 horsepower, add cooling equipment, and replace two filter separators at existing Compressor Station 301 in Wharton County; install two Solar Titan 130 turbines with a rating of 23,470 horsepower each, abandon in place 10 existing compressor units, and add cooling equipment and filter separators at existing Compressor Station 304 in Harrison County; install gas coolers and filter separators at existing Compressor Stations 303 and 394 in Angelina and Cass Counties.

North Baja Pipeline, LLC (TC Energy) has received an Environmental Assessment from the FERC for its proposed **North Baja XPress Project**. A final FERC decision slated for December 7, 2020. The project consists of installation of a new 31,900 ISO horsepower Titan 250 compressor unit at its existing Ehrenberg Compressor Station located in La Paz County, Arizona; and modifications to the infrastructure at North Baja's existing El Paso Meter Station in

La Paz County, Arizona, and Ogilby Meter Station in Imperial County, California. Construction is expected to start in October of 2021, with an anticipated in-service date of November 2022.

Northern Natural Gas has issued a Notice of Intent to Prepare an Environmental Assessment from the FERC for its proposed **Northern Lights Expansion 2021** project. Northern plans to have the project facilities in-service November 1, 2021, to meet the contractual in-service date. The facilities are required to meet customer requests received in the open season for Northern Lights 2021 – Ventura North. The proposed facilities, which are subject to change as the pre-filing process progresses, initially include: (1) 8.30 miles of 30- and 36-inch-diameter mainline loops and extensions; (2) 13.30 miles of branch line loops and extensions – ranging in size between 6 and 30 inches in diameter; (3) one new compressor station and modifications at two compressor stations; and (4) modifications at an interconnect; all located in Minnesota. If approved by the FERC, construction is slated for Spring 2021.

The staff of the FERC has prepared a favorable Environmental Assessment (EA) for the **Clifton to Palmyra A-Line**

PRICE SUPPLY INC.

SALES, SERVICE & RENTALS TO PIPELINE CONTRACTORS

Abrasives	Clamps-Tipton, KC,	Gas Bags	Pipe Ftgs. & Valves
Branding Material	Dearman	Holiday Detectors	Rockshield
Belts-Brushes	Cold Cutters-2-36	Nite Caps	Tensile Testers
Beveling Equipment	Environmental Products	Pigs	Test Plugs
Chain-Shackles	Generators & Pumps	Pipe Seal & Ins.	Welder Accessories

(337) 837-2466

109 CASON ROAD • BROUSSARD, LA 70518

Nationwide (800) 444-2597 • Fax (337) 837-1482

(877) 575-0007

7330 JULIE FRANCES DRIVE • SHREVEPORT, LA 70518

Nationwide (877) 575-0007 • Fax (318) 687-0741

24-HOUR ANSWERING SERVICE

Indicate 71 on Reader Information Card

PROPOSED PROJECTS & UPDATES

Abandonment Project, proposed by **Northern Natural Gas Company**. The proposed Clifton to Palmyra A-Line Abandonment Project includes the following activities: disconnect the existing 24-inch-diameter M600A and the existing 20-inch-diameter M600J at Northern's existing Clifton Compressor Station; disconnect the existing 24-inch-diameter M590A and the existing 24-inch-diameter M600A at Northern's existing Beatrice Compressor Station; disconnect the existing 24-inch-diameter M590A at Northern's existing Palmyra Compressor Station; abandon in-place 54.3 miles of existing 24-inch-diameter M600A mainline in Gage and Jefferson Counties, Nebraska, and Washington and Clay Counties, Kansas; abandon in-place 19.9 miles of existing 20-inch-diameter M600J mainline in Clay and Washington Counties, Kansas; abandon in-place 41.7 miles of existing 24-inch-diameter M590A in Otoe, Lancaster, and Gage Counties, Nebraska, between Palmyra and Beatrice, Nebraska; and install a new 15,900-horsepower turbine driven compressor unit at Northern's existing Beatrice Compressor Station near Beatrice, Nebraska. Northern would abandon in-place: 54.3 miles of its existing 24-inch-diameter M600A mainline in Gage and Jefferson Counties, Nebraska and Washington and Clay Counties, Kansas; 19.9 miles of its existing 20-inch-diameter M600J mainline in Clay and

Washington Counties, Kansas; and 41.7 miles of its existing 24-inch-diameter M590A mainline in Otoe, Lancaster, and Gage Counties, Nebraska, between Palmyra and Beatrice, Nebraska. The project consists of isolation and abandonment of the A-Line and a segment of the J-Line. To abandon the pipeline in-place, Northern would disconnect and cap the A-Line at six interconnections where it is linked to other system facilities. The dig up and disconnects would take place in Clay County, Kansas, one location in Gage County, Nebraska, and one location in Otoe County, Nebraska. The abandonment of the A-Line would result in the abandonment of the J-Line, which is a loop of the A-Line.

Northern Natural Gas has received a notice of Intent to Prepare an Environmental Assessment from the FERC for the **2021 Auburn A-line Abandonment and Capacity Replacement Project** involving construction, operation, and abandonment of facilities by Northern Natural Gas in Lancaster, Otoe, Johnson, and Nemaha counties, Nebraska. Northern proposes to construct and operate 4.4 miles of new 8-inch pipeline, abandon in-place 31.7 miles of 4- to 6-inch A-line, and install a launcher and a regulation station. The 2021 Auburn A-line Abandonment and Capacity Replacement Project is part of Northern's ongoing modernization efforts and review of vintage and mechanically jointed or acetylene welded pipeline segments. According to Northern, it would modernize Northern's existing system, improve reliability, and enable safer long-term operation of Northern's system.

Northern Natural Gas Company has an application before the FERC to construct and operate new facilities as part of its **Pipeline and Facilities Construction Project**. Northern intends to abandon in-place approximately 79.21 miles of its 14- and 16-inch South Sioux City to Sioux Falls M561 A-line (A-line) and appurtenances and to replace the abandoned pipeline with approximately 82.23 miles of 12-inch pipeline and appurtenances in Dakota and Dixon counties, Nebraska, and Lincoln and Union counties, South Dakota; install an approximately 3.15-mile, 12-inch tie-over pipeline and appurtenances in Lincoln County, South Dakota; abandon in-place the existing 0.16-mile, 2-inch Ponca branch line and replace it with an approximately 1.87-mile, 3-inch branch line and appurtenances in Dixon County, Nebraska; abandon in-place the existing 0.06-mile, 2-inch Jackson branch line and appurtenances in Dakota County, Nebraska; modify existing and install new above-grade facilities in various counties in Nebraska and South Dakota; and abandon and remove short segments of pipeline in various counties in Nebraska and South Dakota.

Northern Natural Gas Company has filed a request with the FERC to construct, modify, replace and operate certain compression and pipeline facilities, with appurtenances, located in various counties in Minnesota. Northern proposes

PROPOSED PROJECTS & UPDATES

to: (1) construct an 0.80-mile-long, 24-inch-diameter pipeline extension and an 0.63-mile-long, 24-inch-diameter pipeline loop; (2) replace an 0.08-mile-long, 8-inch-diameter branch line with an equivalent length of 12-inch-diameter pipeline; (3) construct a new 11,153 hp gas-fired turbine greenfield compressor station; (4) install an additional 1,100 hp electric-driven reciprocating compressor unit at its Pierz Compressor Station; and (5) construct various appurtenances, all located within Minnesota.

The staff of the FERC has issued approval for **Northern Natural Gas Company's Palmyra to South Sioux City A-Line Abandonment Project**. The proposed project is in Nebraska and includes the following facilities: abandonment in place of 44.2 miles of 20-inch-diameter and 14.8 miles of 16-inch-diameter mainline in Otoe, Lancaster, Saunders, and Dodge Counties (M581A); abandonment in place of 58.7 miles of 16-inch-diameter mainline in Dodge, Burt, Thurston, and Dakota Counties (M570A); construction of 1.7 miles of new 24-inch-diameter pipeline loop in Otoe County (Palmyra North D-Line Loop); construction of 2.5 miles of new 24-inch-diameter pipeline loop in Dodge County (Fremont North D-Line Loop); construction of a new pig launcher and two valve sites within the existing Palmyra

Compressor Station at the beginning of the Palmyra D-Line Loop and a pig receiver and one valve site at the end of the pipeline loop; and construction of a new pig launcher and one valve site within the existing Fremont Compressor Station and one valve site at the end of the Fremont North D-Line Loop.

PennEast Pipeline has received an Environmental Assessment from the FERC seeking authority for the **PennEast 2020 Amendment Project** involving the construction of approximately 120 miles of 36-inch pipeline to be built in Northampton County, Pennsylvania. PennEast proposes to amend their FERC Certificate Order that was issued on January 19, 2018. PennEast plans to construct the federally approved PennEast Pipeline Project in two separate phases. Phase One would consist of 68 miles of 36-inch pipe, constructed entirely within Pennsylvania and ready to deliver natural gas by November 2021. The Phase Two portion would include the remaining route in Pennsylvania and New Jersey, with a targeted completion of 2023. Additionally, PennEast filed a previous amendment application on February 1, 2019, proposing four modifications to the certificated route in Luzerne, Carbon, Monroe, and Northampton Counties, Pennsylvania. The 2020 Amendment would con-

BKW, Inc.
Portable Trench Box





BKW has developed a Portable Trench Box to provide a safe environment for the men in the ditch while installing auger anchors. The width of ditch is equal to or less than the ditch required for sacks or weights and ditch depth is the same as cross country pipeline requirements. It consists of a fabricated box designed to straddle the pipe and equipped with a walkway and gang plank. This allows the men to enter box from the bank and climb down to do anchor installation. The box is transported from site to site using the backhoe used to install the anchors.

Contact us at
918-836-6767
bkwinc@aol.com

www.bkwinc.com

Indicate 43 on Reader Information Card





CERAMIC STEELOX
grinding wheel

- Unparalleled stock removal rates on steel and stainless steel
- Cool cutting action with minimal discoloration
- Extremely long service life

TRUST BLUE

Choose PFERD wheels for fast, efficient work in your pipeline cutting and grinding applications. Contact us today!



pferd.com ■ (800) 342-9015 ■ sales@pferdusa.com

Indicate 58 on Reader Information Card

DMI INTERNATIONAL



DMI WORKMANSHIP

BENDING PIPES, BREAKING EXPECTATIONS



PIPELINE EQUIPMENT
WWW.DMIINTERNATIONAL.COM
918-438-2213

Indicate 14 on Reader Information Card

18

www.pipelinejobs.com | October/November 2020

19

October/November 2020 | www.pipelinejobs.com

PROPOSED PROJECTS & UPDATES

sist of the following: a new interconnection facilities (Church Road Interconnects) in Bethlehem Township, Northampton County, Pennsylvania; a metering and regulation station at approximate milepost (MP) 68.2 of the certificated route; and two separate interconnection and measurement facilities.

The Red Oak project is being deferred due to the current business environment. The project has not been cancelled, but certain work has been paused.

Phillips 66 and Plains All American Pipeline have formed a 50/50 joint venture, Red Oak Pipeline LLC, and plan to construct the Red Oak Pipeline system. The pipeline system will provide crude oil transportation service from Cushing, Oklahoma, and the Permian Basin in West Texas to Corpus Christi, Ingleside, Houston and Beaumont, Texas. Initial service from Cushing to the Gulf Coast is targeted to commence as early as the first quarter of 2021. The Red Oak joint venture will lease capacity in Plains' Sunrise Pipeline system, which extends from Midland to Wichita Falls, Texas. The joint venture plans to construct a new 30-inch pipeline from Cushing to Wichita Falls and Sealy, Texas. From Sealy, the joint venture will construct a 30-inch pipe-

line segment to Corpus Christi and Ingleside and a 20-inch pipeline segment to Houston and Beaumont. Where feasible, Red Oak plans to utilize existing pipeline and utility corridors and advanced construction techniques to limit environmental and community impact. Plains will lead project construction on behalf of the joint venture, and Phillips 66 will operate the pipeline. The project is expected to cost approximately \$2.5 billion.

Port Arthur Pipeline, LLC, a subsidiary of Semptra LNG & Midstream, has received a positive Final Environmental Impact Statement (EIS) from the FERC and a notice that it can begin site preparation for its proposed Texas Connector natural gas pipeline in connection with the proposed development of the Port Arthur Liquefaction Project by Port Arthur LNG, LLC, and PALNG Common Facilities in Jefferson County, Texas. The Final EIS addresses the potential environmental effects of the construction and operation of the following proposed facilities: two liquefaction trains, each with a capacity of 6.73 million tons per annum of LNG for export; three LNG storage tanks, each with a capacity of 160,000 cubic meters; a refrigerant storage area and truck unloading facilities; a condensate storage area and truck loading facilities; a new marine slip with two

PROPOSED PROJECTS & UPDATES

LNG vessel berths, an LNG vessel and support vessel maneuvering area, and an LNG transfer system; a materials off-loading facility and Pioneer Dock; approximately 38.9 miles of 42-inch-diameter pipeline to bring feed gas from interconnections with Kinder Morgan Louisiana Pipeline LLC, Natural Gas Pipeline Company of America, Houston Pipeline Company LP, Texas Eastern Transmission, LP (TETCO), Florida Gas Transmission Company, LLC, and Golden Triangle Storage, Inc./Centana Intrastate Pipeline, LLC to the terminal site; approximately 131.3 miles of 42-inch-diameter pipeline to bring feed gas from interconnections with Centana Interstate Pipeline, LP, TETCO, Tennessee Gas Pipeline Company, Market Hub Partners – Egan, Pine Prairie Energy Center, Texas Gas Transmission, LLC, ANR Pipeline Company, and Columbia Gulf Transmission, LLC to the terminal site; three compressor stations; meter stations at the pipeline interconnects; and other associated utilities, systems, and facilities (mainline valves, pig launchers/receivers, contractor yards, access roads, etc.). Construction is expected to begin in the third quarter of 2021, with commercial operations expected to begin in third quarter of 2022. On May 8, 2020, Port Arthur Pipeline filed received an Environmental Assessment for the Louisiana Connector Project. Port Arthur Pipeline plans to construct, own,

and operate additional new proposed Liquefaction Facility south of Port Arthur in Jefferson County, Texas. The Louisiana Connector Project will be capable of delivering approximately 2,000,000 MMBtu per day of natural gas to the Liquefaction Project. The Louisiana Connector Project, along with the Texas Connector Project facilities proposed in this proceeding, will be the primary means of delivery of feed gas to the Liquefaction Project. The anticipated construction start date is 1st quarter of 2021 with in-service slated for 3rd quarter 2022. The Louisiana Connector Project will include 131 miles of 42-inch diameter gas pipeline, a new compressor station, interconnection facilities with interstate and intrastate natural gas facilities, and other appurtenant facilities. The proposed Louisiana Connector Project facilities will extend from an interconnect with Columbia Gas Transmission (MP 130.9) located northeast of Eunice, Louisiana in St. Landry Parish through Evangeline, Allen, Beauregard, Calcasieu, and Cameron Parishes in Louisiana and Jefferson County, Texas and terminate at the proposed Liquefaction Facility south of Port Arthur in Jefferson County, Texas. The Louisiana Connector Project, along with the Texas Connector Project facilities proposed in this proceeding, will be the primary means of delivery of feed gas to the Liquefaction Project. Both projects are needed to provide

CPI Pipe & Steel



FAMILY OWNED/OPERATED 140 ACRE FACILITY
20,000 Tons of Inventory



We Purchase New Surplus and Used Steel Pipe

- Longs, Shorts, and Scrap
- Asbestos Coated

Tyler Williams - tyler@cpipe.com



Culvert, Casing & Piling Needs

8" - 42" New Surplus & Used Pipe for Sale

Chris Anderson - chris@cpipe.com
Dallas Williams - dallas@cpipe.com



Visit us at www.cpipe.com
or call us at 405.350.8555

FLUME

Pipe Dealer

Indicate 18 on Reader Information Card

SAFETY IS WHAT WE LIVE FOR.

With safety as our top priority, you can expect us to deliver a quality product, a commitment to our team, and a reputation built on integrity. As a best-in-class pipeline contractor, that's our promise.



MINNESOTA LIMITED

AN ARTERA COMPANY



CONNECT WITH US.
Visit us to learn more at www.mnlimited.com or find us on LinkedIn

Indicate 36 on Reader Information Card



NEED MATS ???
CALL (888) GARNETT



Top Quality Hardwood

Laminated Mats

Solid Mats

Pipeline Skids



GARNETT WOOD PRODUCTS CO. INC.

On Time Delivery by Truck or Rail

Call 24 Hours a Day: Toll Free (888) GARNETT
(888) 427-6388

FAX (417) 867-3242

Evenings (417) 256-0830

Mark Garnett markg@garnettwood.com

"HARDWOOD IS WONDERFUL"

Indicate 47 on Reader Information Card

COMPLETE PIPELINE/GATHERING CONSTRUCTION SERVICES



OTIS
eastern service, LLC
WELLSVILLE, NY

2971 STATE ROUTE 417 EAST
WELLSVILLE, NY 14895
PHONE: 585-593-4760

Indicate 48 on Reader Information Card

20

www.pipelinejobs.com | October/November 2020

October/November 2020 | www.pipelinejobs.com

21

PROPOSED PROJECTS & UPDATES

service to the Liquefaction Project and will allow flexible access to multiple supply basins and systems of upstream transporters. Combined, the projects will give more gas sellers access to Port Arthur LNG and Port Arthur LNG access to more supply basins. The proposed **Port Arthur Pipeline Project** would consist of two segments oriented north and south of the proposed liquefaction project. The 27.6-mile northern portion of the proposed pipeline project would extend from Vidor in Orange County, TX to the proposed liquefaction project, with the majority of the proposed pipeline co-located with existing energy infrastructure rights-of-way. The approximately 7-mile southern portion of the proposed pipeline project would originate in Cameron Parish, Louisiana on the east bank of Sabine Lake and terminate at the Port Arthur Liquefaction Project. The proposed pipeline project would interconnect the Port Arthur Liquefaction Project to various intra- and interstate pipelines, providing access to a number of major U.S. natural gas supply basins. Construction is expected to begin in the third quarter of 2021, with commercial operations expected to begin in third quarter of 2022.

Port Arthur LNG Phase II, LLC (PALNG-II) and PALNG has an application before the FERC seeking authorization

to construct and operate new natural gas liquefaction facilities. The proposed project is known as the **Expansion Project** and would add a total of approximately 13.5 million tonnes per annum (MTPA) of liquefaction capacity for export overseas at the Port Arthur LNG Liquefaction Terminal. The Expansion Project would be located on approximately 900 acres near the City of Port Arthur in Jefferson County, Texas, entirely within the previously authorized Port Arthur LNG Liquefaction Terminal site. The Project would include two new liquefaction trains (Trains 3 and 4), each with its own gas treatment facilities and capable of producing 6.73 MTPA; and associated utilities and infrastructure related to Trains 3 and 4. Issuance of the Environmental Assessment from the FERC is expected January 21, 2021 with a final decision slated for April 2021.

Portland Natural Gas Transmission System (PNGTS) has received an Environmental Assessment from the FERC for its proposed **Westbrook XPress Project (WXP)**. Adding to PNGTS' existing capacity, WXP will be capable of transporting approximately 124,000 dekatherms a day (Dth/d) to areas where it is in great demand. Enhancing PNGTS' existing capacity through WXP will be achieved via the installation of facilities to compress and cool gas on the PNGTS

PROPOSED PROJECTS & UPDATES

system, and the modification of an existing meter station, on land adjacent to the existing Westbrook Compressor Station. The facilities at Westbrook are jointly owned by PNGTS and Maritimes & Northeast Pipeline (MNE), and operated by M&N Operating Company, LLC (MNOC). The proposed project is anticipated to be completed in three phases, with the last expected to go into service by November 1, 2022. All work will be conducted on or adjacent to the existing station. Construction will only be associated with Phase II, which is slated to be placed into service in 2021.

Tennessee Gas Pipeline Company, LLC has received approval from the FERC for the **261 Upgrade Project**. Tennessee Gas is requesting authorization to provide 72,400 million cubic feet per day (Mcf/d) to subscribed project shippers. Tennessee Gas also requests approval to upgrade facilities at Compressor Station 261 to increase reliability to existing shippers. The project includes modifications to existing facilities and installation of new pipeline in Hampden County, Massachusetts. The proposed 261 Upgrade Project includes the following facilities: Horsepower Replacement Project - abandon and replace two existing turbine compressor units with one new turbine compressor unit and auxiliary facilities; and abandon and replace the emergency

generator; a looping project - install 2.1 miles of 12-inch pipeline loop adjacent to Tennessee Gas pipelines; install pig launcher and receiver facilities and tie-in piping; and abandon and remove an inactive 6-inch-diameter pipeline. Construction was approved to begin in March 2020, however construction in light of the current COVID-19 pandemic and potential scheduling uncertainties that may occur as a result, Tennessee has determined that it will delay the planned compressor unit replacement at CS 261 until 2021.

Tennessee Gas Pipeline Company, L.L.C. (TGP), a Kinder Morgan subsidiary, and **Southern Natural Gas Company, L.L.C. (SNG)**, a Delaware limited liability company equally owned by subsidiaries of Kinder Morgan and Southern Company, has received notice from the FERC of a positive Environmental Assessment for the **Evangeline Pass Expansion Project**. The Evangeline Pass Expansion Project is designed to provide up to 1.1 million dekatherms per day (Dth/d) of additional natural gas capacity on Kinder Morgan's TGP and SNG systems in Louisiana and Mississippi. As part of the project, SNG will lease capacity to TGP. The project involves building 9.1 miles of 36-inch diameter pipeline in St. Bernard Parish, Louisiana as well as 4 miles of 36-inch pipeline in Plaquemines Parish, Louisiana. It will



Heavy Machinery
918-623-9330
Specializing In
PIPELINE EQUIPMENT
&
HARDWOOD PRODUCTS
SALES • RENTALS • PARTS • SERVICE

CLINT MEADORS
OWNER/OPERATOR
405-202-1533
CLINT@CMHM.COM

CASEY LOWE
MANAGER
918-716-8268
ALOWE@CMHM.COM



Indicate 33 on Reader Information Card



Remu



PADDING BUCKETS
FOR THE TOUGHEST JOBS

+1 888 600 0018

USA@REMU.FI

WWW.REMU.FI

Indicate 12 on Reader Information Card

PROPOSED PROJECTS & UPDATES

also include two new compressor stations located in Clarke County, Mississippi, and St. Bernard Parish, Louisiana, and modifications to existing facilities on both the TGP and SNG systems. Pending receipt of all required permits, construction is planned to begin in the first quarter of 2021, and the expected in-service date is December 2022.

Texas Eastern Transmission, LP has received a Notice of Intent to Prepare an Environmental Assessment from the FERC for the **Appalachia to Market Project**. A final FERC decision is expected in December 2020. The Appalachia to Market Project would consist of the following facilities and actions, all in Pennsylvania: construction of approximately 0.8 mile of 30-inch-diameter pipeline loop in the same trench as a segment of an abandoned 30-inch-diameter pipe (that would be removed for this project) on the Texas Eastern system in Westmoreland County, PA; one crossover at the existing Bechtelsville pig launcher site in Berks County, PA; one crossover at the existing Uniontown pig-receiver site in Fayette County, PA and other related appurtenances.

Texas Eastern Transmission, LP has an application for its proposed **Middlesex Extension Project** and has received

a Notice of Intent to Prepare an Environmental Statement from the FERC to construct, install, own, operate and maintain 1.55 miles of 20-inch-diameter pipeline, a new metering and regulating station, 0.20 miles of 16-inch-diameter interconnecting piping, and related appurtenances and ancillary facilities to provide natural gas transportation to interconnects with Transcontinental Gas Pipe Line Company, LLC's (Transco) Mainline system and Transco's existing Woodbridge Lateral for ultimate delivery to the 725-Megawatt natural gas-fueled combined-cycle Woodbridge Energy Center owned by CPV Shore Holdings, LLC and located in Woodbridge Township, New Jersey. In-service date is slated for June 2021.

Texas Eastern has received FERC approval for the **Marshall County Mine Panel 19E and 20E Project** located in Marshall County, West Virginia. Texas Eastern proposes to excavate and elevate pipeline segments of its Lines 10, 15, 25, and 30, that range from 30-inch to 36-inch diameter and to monitor stress and strain levels on the pipelines from potential ground subsidence due to Marshall Coal's scheduled longwall mining activities. Concurrent with pipeline elevation, portions of Lines 10 and 15 would be replaced

PROPOSED PROJECTS & UPDATES

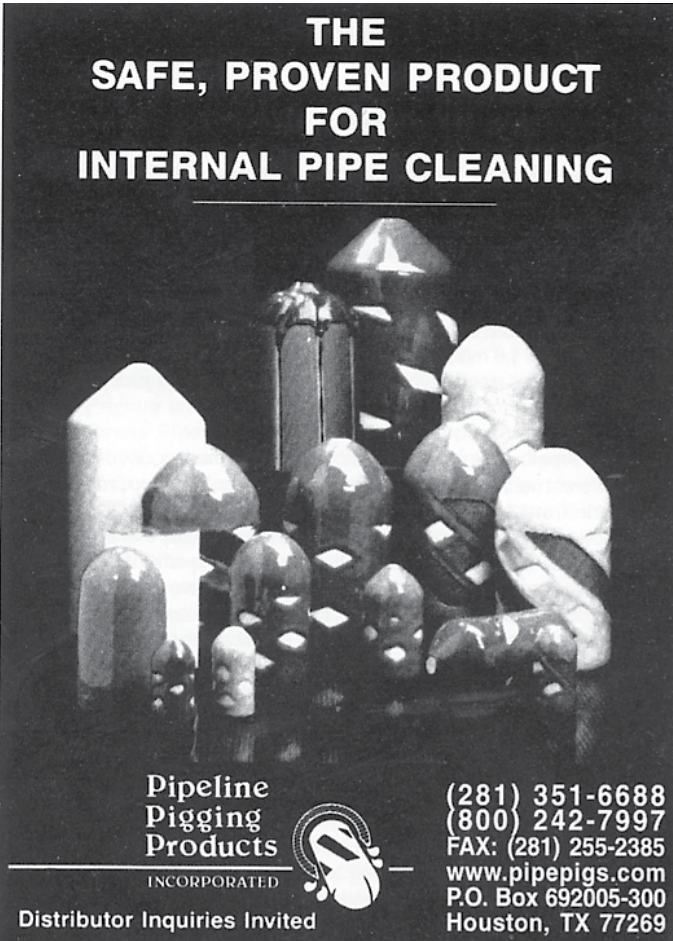
with new pipe to accommodate a minimum Class 2 design. Texas Eastern would also perform maintenance activities on segments of Lines 25 and 30. Marshall Coal recently informed Texas Eastern that longwall mining activities for Mine Panel 20E may now begin as early as August of 2021. As such, Texas Eastern would need to commence activities to protect its pipelines that traverse Mine Panel 20E concurrent with planned activities to protect its pipelines that traverse Mine Panel 19E (longwall mining activities in Mine Panel 19E are anticipated to begin in October 2020) in order to ensure timely stabilization of the pipeline segments above ground for the duration of the longwall mining activities scheduled to take place at both Mine Panels. Completion of longwall mining activities and potential subsidence is anticipated in December 2020 for Mine Panel 19E and in October 2021 for Mine Panel 20E. As such, Texas Eastern is seeking to amend the timing set forth in the Application for completion of project activities from October 2021 to October 2022, prior to the start of Texas Eastern's winter heating season.

Texas Eastern is getting underway with the **Bailey East Mine 11J Project** in Marshall County, West Virginia. Texas

Eastern is seeking authority to excavate, elevate, replace and reinstall certain sections of four pipelines due to the anticipated longwall coal mining activities of CONSOL Energy, Inc. CONSOL plans to mine in January 2021. Texas Eastern's existing Lines 10, 15, 25, and 30 are all located in Marshall County, West Virginia, with a proposed warehouse yard located in Greene County, Pennsylvania. Pipeline activities would include: excavating and replacing approximately 1,932 feet of 30-inch-diameter Line 10 from milepost (MP) 724.4 to MP 724.8; excavating and replacing approximately 1,967 feet of 30-inch-diameter Line 15 from approximately MP 724.9 to MP 725.3; excavating approximately 1,864 feet of 36-inch-diameter Line 25 from MP 44.1 to MP 44.4; and excavating approximately 2,022 feet of 36-inch-diameter Line 30 from MP 724.9 to MP 725.3.

Texas Eastern Transmission, L.P. has received approval from the FERC and has filed its Implementation Plan with the FERC for its proposed **Cameron Extension Project**. The project would provide 750 million cubic feet per day of firm transportation service. Texas Eastern proposes to construct and operate a new compressor station (East Calcasieu Compressor Station) in Calcasieu Parish, Louisiana. The

THE
SAFE, PROVEN PRODUCT
FOR
INTERNAL PIPE CLEANING



Pipeline
Pigging
Products
INCORPORATED

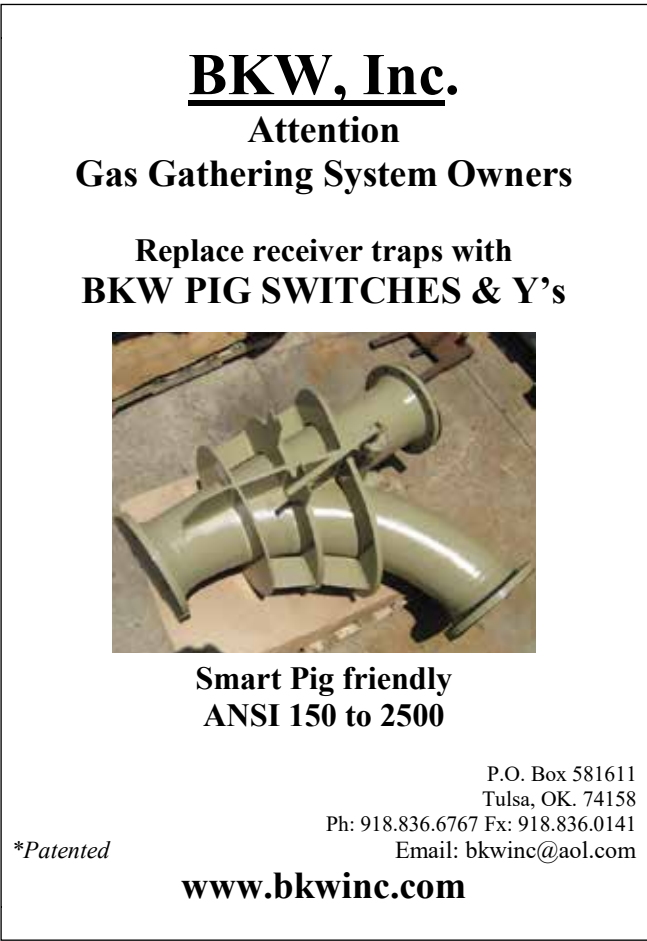
Distributor Inquiries Invited

(281) 351-6688
(800) 242-7997
FAX: (281) 255-2385
www.pipetigs.com
P.O. Box 692005-300
Houston, TX 77269

Indicate 17 on Reader Information Card

BKW, Inc.
Attention
Gas Gathering System Owners

Replace receiver traps with
BKW PIG SWITCHES & Y's



Smart Pig friendly
ANSI 150 to 2500

P.O. Box 581611
Tulsa, OK. 74158
Ph: 918.836.6767 Fx: 918.836.0141
Email: bkwinc@aol.com

*Patented

www.bkwinc.com

Indicate 43 on Reader Information Card

Excavator Mounted Rock Drill
EXCAVATOR MOUNTED ROCK DRILL



JOHN HENRY
A STEEL DRIVIN' MACHINE

JIMCO EQUIPMENT CORPORATION
Home of the JOHN HENRY ROCK DRILL

Charleston, WV | 304.984.0071
www.JohnHenryRockDrill.com

Indicate 71 on Reader Information Card

PROPOSED PROJECTS & UPDATES

new compressor station is comprised of one 30,000 ISO-rated horsepower, natural gas-driven turbine compressor unit and related appurtenances. The project would also consist of three new delivery meter and regulatory stations in Cameron, Beauregard, and Jefferson Davis Parishes, Louisiana; installation of 0.2 miles of 30-inch piping to interconnect with TransCameron Pipeline, LLC's pipeline system in Cameron Parish, Louisiana; installation of miscellaneous equipment at the Gillis Compressor Station in Beauregard Parish, Louisiana; modifications to existing internal pipeline inspection launcher and receiver facilities and two new bypass facilities at existing sites along Texas Eastern's Line 41; and other related auxiliary facilities and appurtenances.

Tennessee Gas Pipeline Company, L.L.C. has received an Environmental Assessment from the FERC to install one 11,107 horsepower gas-turbine driven compressor unit at its existing Compressor Station 321 in Susquehanna County, Pennsylvania; (2) install one 20,500 HP gas-turbine driven compressor unit at its existing Compressor Station 325 in Sussex County, New Jersey; and (3) construct the new 19,000 HP electric-driven Compressor Station 327 in Passaic County, New Jersey (East 300 Upgrade Project). The **East 300 Upgrade Project** would create 115,000 dekatherms per day of firm transportation service. Tennessee estimates the cost of the project to be approximately \$246.3 million.

Haynesville Global Access Pipeline LLC, a subsidiary of **Tellurian Inc.**, is proposing to construct, own and operate an approximately \$1 Billion project with 160 miles of 42-inch pipeline (**Haynes Global Access Pipeline**) and one 23,000 hp compressor station. This proposed pipeline will be capable of transporting upwards of 2 Billion cubic feet of natural gas per day from supply sources originating in the Haynesville / Bossier Shale area. A formal FERC application is expected to be filed in 2020.

Tellurian's Permian Global Access Pipeline (PGAP) is proposing to construct, own and operate the **PGAP Project**, an approximate 625-mile long, 42-inch diameter interstate natural gas pipeline originating at the Waha Hub, the gateway for Permian gas heading to market, and terminating near Lake Charles, Louisiana, the heart of US gas market growth. The project is part of Tellurian's proposed Tellurian Pipeline Network that represents a \$7.0 billion investment in U.S. infrastructure, and the creation of approximately 15,000 jobs in Texas and Louisiana. The investment is incremental to the \$15.2 billion investment that Tellurian plans for Driftwood LNG, a proposed liquefied natural gas (LNG) export facility near Lake Charles, Louisiana. Construction could begin as early as 2021 and the pipeline is targeted to be in service as early as 2023.

Transcontinental Gas Pipe Line Company, LLC has

received a Notice of Intent to Prepare an Environmental Assessment **Regional Energy Access Expansion Project** involving construction and operation of facilities by Transcontinental Gas Pipe Line Company, LLC (Transco) in Bucks, Chester, Delaware, Luzerne, Monroe, Northampton, Wyoming, and York Counties, Pennsylvania; and Burlington, Camden, Gloucester, Hunterdon, Mercer, Somerset, and Warren Counties, New Jersey; and Baltimore County, Maryland. Transco plans to construct and operate approximately 35.8 miles of pipeline loop and one new compressor station, as well as modify existing compressor stations and facilities in Pennsylvania and New Jersey. The project would provide about 760 million standard cubic feet of natural gas per day to multiple delivery points along Transco's existing system in Pennsylvania, New Jersey, and Maryland. According to Transco, its project would provide its customers with enhanced access to Marcellus and Utica Shale natural gas supplies. The project would consist of the following facilities: installation of 22 miles of 30-inch-diameter pipeline loop in Luzerne County, Pennsylvania (Regional Energy Lateral); installation of 13.8 miles of 42-inch-diameter pipeline loop in Monroe County, Pennsylvania (Effort Loop); installation of the new Compressor Station 201 (up to 11,500 horsepower in Gloucester County, New Jersey); installation of a gas turbine or electric motor-driven compressor unit (up to 16,000 hp) at existing Compressor Station 505 in Somerset County, New Jersey; installation of a gas turbine compressor unit (up to an additional 31,871 hp) and modifications to three existing compressors at existing Compressor Station 515 in Luzerne County, Pennsylvania; modifications at existing compressor stations, meter stations, interconnects, and ancillary facilities in Pennsylvania, New Jersey, and Maryland; and installation of ancillary facilities such as mainline valves, communication facilities, and pig launchers and receivers.

Transcontinental Gas Pipe Line Company, LLC has received FERC approval for its proposed **Leidy South Project**. The project would expand Transco's existing pipeline system to enable it to provide an additional 582,400 dekatherms per day of firm transportation service to three shippers, and abandon a small portion of its existing facilities. Transco seeks authorization for the construction and operation of approximately 8.7 miles of 36-inch-diameter looping facilities and the related abandonment of 5.8 miles of 23.375-inch pipeline in Clinton County, Pennsylvania; construction and operation of approximately 3.6 miles of 42-inch looping facilities in Lycoming County, Pennsylvania; the addition of 45,87 horsepower (hp) at two existing compressor stations Wyoming and Columbia Counties, Pennsylvania; and construction and operation of two new compressor stations totaling 78,801 hp in Luzerne and Schuylkill Counties, Pennsylvania. The estimated cost of the Project is \$531.12 million. In-service is slated in time for the 2021-22 winter heating season.

PROPOSED PROJECTS & UPDATES

Tuscarora Gas Transmission Company has an application before the FERC seeking authorization to increase its certificated capacity on the pipeline by 15,000 dekatherms per day of firm capacity from Malin, Oregon to the Wadsworth Compressor Station (CS) in Washoe County, Nevada, effected through modifications to the original design assumption within Tuscarora's engineering models, and replace a 600 horsepower (HP) reciprocating compressor unit with a new 1,380 HP reciprocating compressor unit along with related piping and appurtenant facilities at its existing Wadsworth CS (**Tuscarora XPress Project**). Construction start is anticipated for June 2021.

Venture Global Plaquemines LNG, LLC (Plaquemines LNG) and Venture Global Gator Express, LLC (Gator Express Pipeline) have received FERC Notice to Proceed to construct the process facilities for the **Plaquemines LNG and Project**. Plaquemines LNG and Gator Express Pipeline are proposing to construct and operate a new LNG export terminal and associated facilities along the west bank of the Mississippi River in Plaquemines Parish, Louisiana (Terminal) and to construct and operate two new 42-inch diameter natural gas pipeline laterals that will connect the Terminal to the pipeline facilities of Tennessee Gas Pipeline Company and Texas Eastern Transmission. The two parallel and adjacent laterals (11.7 and 15.1 miles long) would be operated at an MAOP of 1,200 pounds per square inch and will be designed to provide firm transportation capacity of approximately 1,970,000 Dt/d to the Terminal. Total cost of the pipeline portion of the project is estimated to be approximately 284 million dollars.

Whistler Pipeline LLC is planning to construct 450 miles of 42-inch pipeline from Waha, Texas, to the Agua Dulce area in South Texas. An approximately 50-mile 36-inch lateral will provide connectivity for gas processors in the Midland Basin. The pipeline will have transportation capacity of 2 billion cubic feet per day (Bcf/d). Whistler Pipeline has contracted for the supply of the entirety of 42"/36" steel pipeline needed to complete the project and is on schedule in its completion of survey along the planned route and acquisition of appropriate permits for a summer 2021 in-service date. Construction will commence in October 2020.

Williams has received approval from the FERC for the **Northeast Supply Enhancement** project. The project is an expansion of the existing Transco natural gas pipeline designed to serve New York markets in time for the 2020/2021 winter heating season. Construction will include: 10.2 miles of 42-inch pipeline loop in Lancaster County, Pennsylvania (the Quarryville Loop); 3.4 miles of 26-inch pipeline loop in Middlesex County, New Jersey (the Madison Loop); 23.5 miles of 26-inch pipeline loop in Middlesex and Monmouth Counties, New Jersey, and Queens and Richmond Coun-

ties, New York (the Raritan Bay Loop, which consists of 0.2 mile of pipe in onshore Middlesex County, New Jersey; 6.0 miles of offshore pipe in New Jersey waters; and 17.3 miles of offshore pipe in New York waters); modification of the existing Compressor Station 200 in Chester County, Pennsylvania; construction of new Compressor Station 206 in Somerset County, New Jersey; and ancillary facilities.

Williams is continuing to conduct environmental surveys for its proposed **Regional Energy Access Project**. The project will include approximately 22.2 miles of 30-inch pipeline in Luzerne County, PA; 13.8 miles of 42-inch looping in Monroe County, PA (Effort Loop); greenfield gas-fired turbine driven or electric motor driven compressor at Compressor Station 201 with approximately 11,500 horsepower (HP) in Gloucester County, NJ; addition of gas-fired turbine driven or electric motor-driven compressor at existing Compressor Station 505 with approximately 16,000 HP in Somerset County, NJ; addition of one gas-fired turbine driven compressor with approximately 31,871 HP and modification of three existing compressors at existing Compressor Station 515 in Luzerne County, PA to support the project; abandonment and replacement of approximately 17,000 HP from five existing gas-fired reciprocating driven compressors with one gas-fired turbine driven compressor with approximately 20,502 HP at existing Compressor Station 515 in Luzerne County, PA; modifications at existing Compressor Station 195 in York County, PA; modifications at existing Compressor Station 200 in Chester County, PA; Modifications to three existing receipt meter stations in PA (Carverton Interconnect & Tie In, Chapin Facility Meter & Regulating [M&R] Station, Williams Field Services Puddlefield M&R Station); modifications to two existing pipeline interconnects in PA (Hildebrandt Interconnect & M&R, Lower Demunds Interconnect); addition of regulation at an existing valve setting on Transco's Mainline "A" in Bucks County, PA (Mainline A Regulator); modifications at the Delaware River Regulator Facility in Northampton, PA; modifications to three delivery meter stations in NJ (Camden M&R Station, Lawnside Meter Station and Mt. Laurel Meter Station); modifications to delivery meter station in PA (Chester M&R Station); modifications to one existing meter station in MD (Beaver Dam M&R Station); increased flow (no modifications) to six delivery meter stations (Centerville, Low Mud Run, Post Road, New Village, Spruce Run and Repaupo M & R Stations); additional ancillary facilities, such as mainline valves (MLVs), cathodic protection, communication facilities, and internal inspection device (e.g., pig) launchers and receivers in PA; and existing, improved, and new access roads and contractor yards/staging areas in PA, NJ, and MD. Subject to FERC's certification of the project and receipt of the necessary permits and authorizations, Transco anticipates construction of the project would commence in fourth quarter 2022 to meet a proposed in-service date of December 1, 2020.

Introduces A Special Pipelayer From Their Fleet

Since 2005 PipeLine Machinery International (PLM) has served the needs of the mainline pipeline construction industry. In that time, many trials have been overcome by working closely with customers to understand what the problem is and to create a solution for a sustainable future. Together, we now face an unprecedented challenge. The landscape of our world has changed since the beginning of this year and with that has come uncertainties in our personal lives and business alike. The scene of our work, social and personal interaction with others has shifted so dramatically that in one way or another, all of us are affected. With a sense of community support and comradery in mind, PLM president, Tony Fernandez, commissioned this Cat®PL87 pipelayer to be painted as a special addition to the fleet and as a reminder that we are all in this together. We appreciate that you rely on PLM for your pipeline equipment needs and want to reassure you that we will continue to be a reliable resource for this industry.



Morrison

Successfully Completes Pipeline Installation in Gulf of Mexico Shelf, Achieving Milestone



"We are established pipeline veterans that can accomplish challenging projects even in difficult times, and the completion of this project is evidence of that."

The Byron pipeline installation presented a unique opportunity for the triple lay of a portion of the overall pipelay on the project. To perform the pipelay installations and bury operations, Morrison utilized its pipeline lay barge, the CM-15. Morrison worked with the export pipeline companies and installed hot tap tie-in on those transmission lines. This was performed utilizing Morrison's dive asset, DSV Kelly Morrison, while the DSV Joanne Morrison provided both saturation and surface diving support for the riser clamp, pipeline tie-ins and various dive operations.

"We are extremely proud to reach the milestone of 'more than 5.5 million ft of pipe laid in the Gulf of Mexico' in 2020, the year in which Morrison celebrates its 20th anniversary of working in the pipeline business," stated Morrison CEO Chet Morrison. "We are established pipeline veterans that can accomplish challenging projects even in difficult times, and the completion of this project is evidence of that."

Morrison, a leading energy service company for the oil, gas and renewables industries, successfully completes the installation of Byron Energy Limited's South Marsh Island Blocks 58 & 59 oil and gas sales pipelines, which marked more than 5.5 million feet of pipe laid by Morrison in the Gulf of Mexico.

The most recent 60,720 foot pipeline installation campaign consisted of 3 inch, 4 inch, 6 inch and 8 inch pipelines in water depths of approximately 140 feet and included burials, risers and tie-in fabrication and installations, crossing mitigation, and pigging, hydro testing and commissioning of the pipelines.

Army Corps

Begins Environmental Review of Dakota Access Oil Pipeline; Public Comments Sought

The Army Corps of Engineers launched an extensive review of the Dakota Access Pipeline in mid-September 2020 - the latest in a winding legal battle.

Following a federal judge's order in July 2020, the Corps began its evaluation of the environmental impacts of the oil pipeline at its Missouri River crossing, according to a notice published in the Federal Register, Sept. 10, 2020.

The Missouri River crossing, which is in North Dakota just off the Standing Rock Reservation, has been the site of intense protest over the years as environmentalists and tribal members argue that the crossing endangers Standing Rock's water source.

The start of the Corps' environmental impact statement (EIS) kicks off a 45-day public comment period, running until October 26, 2020 during which the agency will hear input on the scope of their review and hold public video conferences on their plans for the evaluation. Those meetings are scheduled for 6-9 p.m. Central time on Thursday and Friday, Oct. 15 and 16.

"As the lead federal agency, the Corps will also coordinate with the public, other state and local agencies, and Tribes in order to evaluate the range of actions, alternatives, and impacts of the proposed project," the Army Corps wrote in their announcement. "The Corps will use the comments received to assist in identifying the significant issues which should be addressed in the EIS."

In July, Judge James Boasberg of the U.S. District Court for the District of Columbia ordered Dakota Access and its

parent company, Energy Transfer Partners, to shut down the pipeline and keep it empty for the duration of a lengthy environmental review, estimated to take up to 13 months. Boasberg's ruling prompted Dakota Access to appeal to the U.S. Court of Appeals for the District of Columbia, and the pipeline operator continued to run oil through the pipeline in the wake of the initial federal court order.

In early August, the appeals court issued an emergency stay on Boasberg's shutdown order, giving the pipeline clearance to continue operating through the lengthy environmental review process. In their emergency stay, the appeals court also shifted jurisdiction over the pipeline's operations to the Army Corps, calling on the agency to make a decision on Boasberg's revocation of the pipeline's easement at the Missouri River crossing, which rendered the DAPL operations illegal at that point.

The Corps has not provided a date for its decision on the pipeline easement. In a recent court filing, Standing Rock said it does not expect the agency to take action against the pipeline given the federal government's position on its operation, writing that "the inevitable choice is that the Corps will take no action to shut down the pipeline in response to" its violation of environmental law.

The legal battle over the EIS and the pipeline easement are still being hashed out in the federal appeals court. The tribes were expected to file a response to Dakota Access arguing that the appeals court should overturn the Boasberg ruling.

Mountain Valley Pipeline

Regains Permit To Cross Streams, Wetlands



According to reports, a path across nearly 1,000 streams and wetlands was cleared September 25, 2020 for the Mountain Valley Pipeline.

The U.S. Army Corps of Engineers reissued three permits for the natural gas pipeline being built in Virginia and West Virginia, nearly two years after they were invalidated by a federal appeals court.

"Effective immediately, you may resume all activities being done in reliance upon the authorization" first given in January 2018, William Walker, chief of the Army Corps' regulatory branch in Norfolk, wrote in a letter to Mountain Valley.

With the long-awaited decision, the company moved one step closer to resuming construction of a massive project that has stirred deep controversy in Southwest Virginia since it was first proposed six years ago.



Blacky & Rita Seales are excited to announce that they are expecting a great granddaughter that will be born in February! Congratulations!

This was shared from **Blacky Seales**:
I'm just sitting here reminiscing of the past 63 years, I remember well my first pipeline job, a few days past the 4th of July 1957. I left Hemphill Tx for Lawrenceburg, Tennessee to hook pipe on the pipe yard for Dunn Bro. We were stringing for H C Price. My last job finished last Tuesday July 14 2020 for Michels Corp, San Augustine, Texas (warehouse was 12 miles from my house). I was on a boom PL83 and had a very fine foreman, Rob Taylor. I'm trying to remember all the contractors that I have had the privilege to work for. I say privileged because I consider it a great privilege to have worked for these companies. I won't try to remember the order of which I worked for them and some were very short jobs. Here they are: Dunn Bros, Panama Williams, GG (Tuffy) Griffis, Houston Contracting, WL Golightly, RB Potaschnick, CS Lenore, T G. Mercer, AIC (Alaska Intl Cont), Gregory & Cook, H.C. Price, Cap-Con (Jack Hays), Henkel & McCoy, ARB, Precision Pipeline, MDS, Sheehan, Michels, Snelson Inc, R.H. Fulton, Napp Grecco, Latex, and JoMax. I almost forgot Visions Pipeline, my ol' pal Jim-my Folk. It has been a great experience, not to say that I didn't pick up a few bucks along the way. I'm going to miss those dusty and muddy days on the ROW, and all the fine people that I have met along the way but the Bible says there is a time for everything, so it's my time to hang it up. I will be working for the toughest boss yet, Ms. Rita. She is a hard boss and the pay ain't much but the fringes are great! May God Bless all you Pipeliners! P.S. - in naming contractors that I had worked for I forgot Appalachian Pipeline, U S Pipeline, Curran Houston, Goldrush, and Quanta!



Bradley Newcomb and his fishing partner started the year off on a good note. They recently came in with 11.58 lbs, for a 3rd place finish on the Ouachita River.

Shared by **Robert Chapman** –
"I am so proud of our pipeline industry! The many men who taught me everything I know and helped me get to this place I am now are forever imbedded in my soul! Robert W. Chapman! A Proud Pipeliner! A Proud American! God Bless the Pipeliner!"



Mike Miller, a 798 journeyman and his beautiful wife, Camy have waited 16 years for their miracle baby. Their son was born August 26, 2020, weighing 8 lbs. 0 oz. and was 20 inches long. Along with his proud parents, his grandparents, Randy Miller, Jeannie Sumrell, Steve and Kathy Harris and Andy and Kathy Hobson are very proud also! Congratulations!!



Pipeline College Pipeline College News -
Mr. Ray Wilsdorf gave a class on the API 1104 pipeline welding procedure on September 22, 2020. Class was held at the BKW, Inc. shop, with 27 people attending with 16 receiving a 2-hour PDH. Eddie Belden and Nathan Parker performed the welding on 12-inch pipe. Extra hoods were furnished for students to observe the welding. The 12-inch weld will be x-rayed by IRIS NDT and sent to Central NDT for the January 26th class demonstrating coupon testing. These two classes demonstrate welding procedure, technique, and inspection. The next class is on October 6th and will again be at the BKW shop. The topic is Detailed Pipeline Design with information that cannot be Googled. The information will provide guidelines for cost savings and increased safety for pipeline operators. Contact BKW, Inc. for more information at (918) 836-6767 or by email at bkwinc@aol.com

Enterprise and Customers

Amend Crude Oil Agreements; Enterprise Cancelling Midland to Echo 4 Pipeline

Enterprise Products Partners L.P. announced that it and certain of its customers have amended agreements that provide Enterprise the ability to use the partnership's existing pipelines to support its crude oil transportation agreements and to cancel the 450,000 barrels per day Midland-to-ECHO 4 crude oil pipeline project ("M2E4"). Generally, the amendments provide for the reduction of near term volume commitments in exchange for extending the term of the agreements.

The cancellation of M2E4 will reduce aggregate growth capital expenditures for 2020, 2021 and 2022 by approximately \$800 million. Based on currently sanctioned projects, we expect growth capital expenditures, net of contributions from joint venture partners, for 2020, 2021 and 2022 to be approximately \$2.8 billion, \$1.6 billion and \$900 million, respectively. These estimates do not include capital investments associated with our proposed deep water offshore crude oil terminal ("SPOT"), which remains subject to governmental approvals. We do not expect to receive the approvals for SPOT in 2020. As a result of the cancellation, Enterprise expects to record an impairment charge of approximately \$45 million to its earnings for the third quarter of 2020.

"We are very proud of our commercial team for responding and working with our customers to amend these long-term agreements," said A. J. "Jim" Teague, co-CEO of Enterprise's general partner. "This is another example of Enterprise working with customers for a 'win/win' solution that allows our customers and Enterprise to better allocate capital during the challenging times of the current economic cycle while retaining long-term, fee-based volumes and revenues for our assets. The capital savings from the cancellation of M2E4 will accelerate Enterprise toward being discretionary free cash flow positive, which would give us the flexibility to reduce debt and return additional capital to our partners, including through buybacks."







Elaine Warner, 76, of Jasper, Texas passed away in Lufkin on August 15, 2020. A Celebration of Life Service was held on August 19, 2020 at the Jasper County Cowboy Church in Jasper with interment at West Oaks Cemetery. Elaine was born on December 7, 1943 in Campti, Louisiana to Claudie & Maggie Pate Giddens. A loving housewife, mother, grandmother and great grandmother, she was a life-long resident of Jasper. She is survived by her husband Joe H. Warner, whom she married on June 1, 1963, of Jasper; sons Gary Warner & wife Delores of Jasper and Steven Warner & wife Stacy of Brookeland; brothers Richard Giddens & wife Mike of Huntington and Douglas Giddens & wife Dale of Ebenezer Community; sisters Opal Gray of Fairview Alpha, Louisiana and Faye Ward & husband Vernon of Ebenezer Community; grandchildren Jodie, Kyle, Brodey, Brantley, & Amie; as well as great grandchildren Fallon, Case & Cash. She is preceded in death by a brother Louie Giddens and a sister Shirley Burns. Condolences can be posted at www.shultzfuneralhomeofjasper.com



Micheal Craig Cavness, 60, of Henderson, TX passed from this life on September 17, 2020 at UT Health in Tyler. He was born February 7, 1960 in Pasadena and has lived in Henderson for the last 31 years where he was a member of Ebenezer Baptist Church. Mr. Cavness spent his career as a pipeliner and straw boss, most recently for Price-Gregory. He was a very laid back, easy-going man and enjoyed a good prank, and people truly loved him. He was a sports fanatic and loved fishing, taking the boat out, and doing yard work. Above all, Micheal was a family man that enjoyed time with his children and being the best "Pop Pop" to his grandchildren. He was preceded in death by his father, Buddy Cavness; and aunt, Oleta Marsh. He is survived by his wife of 38 years, Kathy Cavness of Henderson; mother, LaJuana Cavness of Mineral Wells; son, Ryan Cavness of Henderson; daughter, Kristin Sadler and husband Samuel of Whitehouse; grandchildren and the lights of his life, Mack Sadler and Major Sadler of Whitehouse; brother, Randall Ward Cavness and wife Shannon of Mineral Wells; and a host of family, friends, and work colleagues. Honorary pallbearers were Ryan Cavness, Lee Durrett, Forest Durrett, Marc Taylor, Alex Kendrick, and David Chapman.

Clint Ray "Tex" Howell, 85, of Coffeeville, Mississippi passed from this life on May 6, 2020, at North Mississippi Medical Center in Tupelo. Born on February 11, 1935, in McComb, Mississippi, Clint was a son to the late Charles Ray Howell and Lottie Humphreys Howell. "Tex" began his career working on the pipeline at the age of 17 and was an engineer until his retirement at the age of 73. He worked throughout the United States and was helpful in obtaining

jobs for many family members. His favorite uncle, Carl Humphreys worked with him in many states. "Tex" shared a special bone with him and his Aunt B. The Humphrey's home place near Red Lick, MS held a special place in "Tex's" heart. He spent many times there from his youth until his passing. He was laid to rest just down the road from there in the family cemetery beside his Beloved Big Mama. After retirement, Clint devoted his time to meticulously looking after his home place. Clint is survived by a loving family that will carry his precious memory in their hearts for the remainder of their days: wife: Carol Oaks Howell of Coffeeville, Mississippi, son: Jeb Stewart Howell (Pandy) of Coffeeville, Mississippi, daughter: Katie Howell of Coffeeville, Mississippi, brothers: Jerry Howell of Overt, Mississippi, and Ottis Howell of New Orleans, Louisiana, sister: Peggy Houston of Clemmons, North Carolina, and grandchild: Webb Howell. Clint was preceded in death by his parents: Charles Ray Howell and Lottie Humphreys Howell.



Leo "Red" Barry passed away peacefully at his residence on August 15, 2020 at the age of 86. He was a native of Oklahoma and resided in Denham Springs for 40 years. He traveled the world as a heavy equipment operator on pipelines. After retirement, he enjoyed gardening, bee keeping and volunteering with St. Vincent de Paul Food Pantry. He was also a faithful Adoration Chapel adorer. Leo is preceded in death by his wife, Patsy; parents and one brother. He is survived by his two children Kathy Maggio (Vincent), David Barry (Cara); four grandchildren Jacob Barry (Liz), Zachary Barry, Trey Maggio, Hannah Aime (Austin); one great grandchild Addison Aime; and one brother Bill Barry.



Ann Brewer Basinger passed away peacefully in her home at Green Country Village on Aug. 1. She was born in Tulsa on Aug. 30, 1939, to parents Chester A. and Eileen Brewer, then raised in Bartlesville after the family moved there following her father's World War II service at Sheppard Army Air Field in Texas from 1941-45, of which she spoke fondly. She graduated from College High School with honors and went on to study journalism at the University of Oklahoma. There she was a member of Kappa Kappa Gamma sorority and made many lifelong friends. After graduation from OU, Ann worked as a writer and editor for several newspapers throughout the state but said her favorite job was creating the newsletters and magazine for the H.C. Price (Pipeline) Company upon her return to Bartlesville. In 1963 Ann married local independent oil producer Albert E. Basinger, Jr. and became the de facto office manager who helped hold Basinger Oil Company together for the next 50 years. She also wrote a humorous editorial column throughout the brief print run of the Bartlesville Constitution newspaper. Ann

was a great friend to many, known for her ready smile and laugh, and for the wit she displayed in person and in writing. She loved animals and was a serial adopter of stray dogs and cats. She volunteered at the Washington County SPCA and was active in PEO and bridge club. Ann's great joy was the company of friends and family, and she was almost always upbeat and optimistic. She was predeceased by her husband Al and her older sister Betty Foster Phillips, and is survived by her sons Joe and John, their spouses and five grandchildren.



Bobby Brewer of Jackson Michigan passed away at the age of 82 on September 14, 2020. Bobby was born December 27, 1937 in Stateline, Mississippi to A. R. Brewer and Annie E. Dearman. LeRoy married Lounita May on September 6, 1969. LeRoy worked as a pipeline operator for many years until he retired in 2000. He enjoyed dancing with the boot scooters, spending time with his family, specifically his great grandchildren and attending his UAW meetings. He is survived by his significant other Elaine Weed; children Dan (Susan) Thomasson, George McCleery, and Doug McCleery; grandchildren Ron (Lexi) Thomasson, Tonya (Hunter) Lantis, Misty (Tim) Moore, George McCleery J.R, Kessie (Kim) McCleery, and Michael McCleery; 7 great grandchildren; and many nieces and nephews. He is preceded in death by his parents, wife Lounita, son Bobby McCleery and daughter-in-law JoAnne McCleery. A graveside service will be held on Friday, September 18, 2020 at 1:00 PM at Roseland Memorial Gardens with military honors.



Kenneth Lusk, Sr. passed from this world to the next on August 15, 2020, at the Richard L. Owens Hospice Home in Peoria, IL. His wife of many years was with him holding his hand when he peacefully and quietly slipped away. Ken was born in Olney, IL on June 9, 1938 to Frank and Anna McLaughlin Lusk, and was the youngest of five boys. They, of course, predeceased him, as did his brothers Alan, Bob, Don, one grandchild Kyndra, and nephew Alan. Upon his graduation from high school, he got on a bus and headed for a job his brother, Bob, was running in Ohio. That was the beginning of his career as a pipeline welder. This was a career he was very proud of, and he was one of the best welders ever. In later years, he went to Alaska and worked on that pipeline. For a number of years he was a Boilermaker in Local 60 and was the general foreman at the Powerton Plant for ten years. There was yet one more career to be explored – an antique dealer and collector. He really enjoyed this last pursuit, and we had a lot of fun traveling across the U.S. looking for bargains. He married Linda Heinz on December 14, 1974, and she was the love of his life and he of hers. She survives. He is also survived by two of the best sons anyone could ask

for, Kenneth (Chris) Lusk, Jr. and Gary (Debbie) Lusk and two daughters, Brenda Lusk and Sherry Lusk. There is a handful of grandkids, and a smaller handful of great-grandkids. Also survived by one brother, John (Judy) Lusk; one brother-in-law, Phil Cornish; and a number of nieces and nephews scattered around the country. Then there are the nieces and nephews who have remained close, Tracey and Simon, Robin (John), Cindy (Ronnie) and, as he referred to them, Missouri Bob and California Bob. We can't forget his dog, Daisy, because he loved that coon hound, and vice versa.

Harold C Price, formerly of Bartlesville, OK, died in Scottsdale, AZ on September 3, 2020, after a long illness. Harold Price was born in Tulsa, OK, on February 17, 1927. Harold spent his younger years in Bartlesville, attending Garfield Elementary and Central Junior High. He continued his education at New Mexico Military Institute graduating in 1945. After two years in the US Army he returned to Oklahoma where he graduated from the University of Oklahoma in 1951 earning a Bachelor of Business Administration. After graduation he joined the H C Price Co. He succeeded his father as president of the company in 1963 and served in that position until 1980. The company was headquartered in Frank Lloyd Wright's only skyscraper, The Price Tower, commissioned by his father. During his tenure the H C Price Co and its partners expanded the pipeline construction and coating services into a global business with offices in Great Britain, The Netherlands, Libya, Iran, Iraq and Singapore. After relocating to California in 1983, Harold remained active enjoying hiking and skiing in Idaho and kayaking in the Pacific. Harold was active in the Arts community serving on multiple boards across the country. In addition he also served on the board of the George M Sutton Aviary Research Center in Bartlesville and Colorado College. He is survived by his wife, Sandy; seven children; ten grandchildren; and one great grandchild.



Darren Bradley Moore, 53, died August 16, 2020 at Jersey Community Hospital in Jerseyville, Illinois. He was born in Jerseyville on Dec. 8, 1966; one of two sons born to Carl G. and Joyce D. (Murrie) Moore. Darren attended Jerseyville schools and graduated in 1985 from Jersey Community High School, and went on to attend Oklahoma State University in Stillwater, Oklahoma, and Black Hawk College in Kewanee, Illinois. He was involved in agriculture from a young age, and was involved in the family business, Moore's Oil and Fertilizer in Jerseyville. He later owned Murphy's in Jerseyville, and then went on to work in the pipeline industry with the Curran Group, and the railroad industry with Cranemasters. Darren was blessed with a close knit group of friends, and those that knew him best could attest to his fierce loyalty, stubbornness and generosity. He is survived by a brother, Craig Moore

of Jerseyville; an aunt and uncle, Nancy and Gus McCain; and their three children of Tulsa, Oklahoma; along with his many friends. He was preceded in death by his parents. Memorials in honor of Darren may be directed to Crawford Funeral Home.



Bert Kendall Millhone, 69, of Cumberland, lost his life on August 29, 2020. Bert was a member of Ohio Operating Engineers Local 18. He started on the pipeline when he was 17 years old and continued on for 45 plus years. He lived his life to the fullest and burnt the candles at both ends. He was born May 30, 1951 to the late John and Donna Millhone. In addition to his parents, he was preceded in death by his brother Don Millhone and sister-in-law Judy Millhone. Those left to cherish his memory are his brothers Max and Rex Millhone; sister Nancy (Jeff) Tellep; and sister-in-law Phyllis Millhone. His children Jackie McJessey, Luke Davis and Staci Millhone; and his granddaughter Tegan.



Larry Bradshaw, age 64 of Breckenridge, passed away Friday, August 14, 2020. Larry Lynn Bradshaw was born January 20, 1956 in Seminole, Texas to Floyd Alfred Bradshaw and Floyellar (Floy) Ashworth Bradshaw. He attended Cooper High School and later worked as a pipeline welder and inspector where he met many friends through the years. Larry married Beatrice Sue Garvin on January 30, 2006 in Houston. He was a member of the ELKS Lodge # 1480. Larry loved playing cornhole. He had his own cornhole family, Boss Hogg Cornhole, that referred to him as "Big Dog". Larry also enjoyed playing guitar, playing golf, singing and dancing. In fact, he'd sing and dance, even when no one was around, or at least he thought no one was around. He enjoyed entertaining others, usually while grilling or cooking up some crawfish. He had a drive to be the best at whatever he was doing. Larry would do anything to help anyone and was the best neighbor, always lending a helping hand when it was needed. He was very talented and could build anything and actually built their home from the ground up and continued to build onto it and change things up as needed or desired. Larry loved to show off his handy work to everyone! He taught many people many things and enjoyed teaching. Larry had a talent for pulling wrapped peppermints out of his ears for his grandkids, or at least they believed he could. He had funny sayings and a skip in his step that was so memorable, but difficult to duplicate. Larry was full of life and lived it to the fullest. There is no one like Larry Bradshaw - he was definitely one of a kind! He was preceded in death by his parents, Floyd & Floy Bradshaw; one brother, Harold Wayne Bradshaw; two sisters, Ginger Elliott and Linda Little. Larry is survived by his wife & love of his life, Beatrice Sue Bradshaw; his children, Misty & WT Miller, Misty & Will


Langley, Rick Jr. & Allison Rader, Kimberly Bradshaw & Cody Lawson, Randi Bradshaw & Michael Morris, Russell Bradshaw & Cassie Leigh; one brother, Raymond Williams; one sister, Sharon Bassinger; his grandchildren, Kenzie Bell, Shelly & Josh Rice, Kellen Rader, Jewels Langley, Samantha Lausch, Abigail Lausch; his great grandchild, Kelcey Childs; and many wonderful friends. Memorials may be made to the ELKS Lodge # 1480. Condolences may be made online at www.morehartmortuary.net.



On September 19, 2020, **Brenda Cherryl Pennell Blair** died in Midland, Texas after a short battle with cancer. She was 71 years old. Cherryl was preceded in death by her parents, Otis Franklin Pennell and Gladys Williams; her husband, Roger Dale Blair; her son, Bobby Glenn Blair, and her brothers, Novice and Joe Pennell. She is survived by her sons; Robby Dale Blair of Midland, Texas and his children Brooke Blair, Meagan Blair, Brendan Blair, and Marclay Norton; son, Shad Franklin Blair, wife Rachel and their children; Joseph Glenn and Franklin Mack of Austin, Tx; grandchildren; Macy Buchanan of Ft. Worth and Vance Blair of Cedar Park; sisters, Linda Riley of Melrose, NM and Maritta Reed of Justiceburg, Texas. Cerryl was born on July 29, 1949 in Post, Texas. She graduated from Post High School in 1967 and went on to attend South Plains College before marrying Roger Dale Blair on October 23, 1970. They welcomed their twins, Robby Dale and Bobby Glenn in 1971, and Shad Franklin in 1977. Cherryl was a track star in high school, loved basketball, horseback riding, hunting, music and dancing. She dedicated her life to family, friends, and her career in the west Texas oil and gas industry, specifically pipeline construction and maintenance. She was funny, honest, real, caring and an incredibly hard worker. She deeply loved her friends, family, and Jesus Cherryl's children would like to especially thank their aunt Maritta for her loving care and tireless efforts in assisting their mother in her final days. They have never seen a fiercer love than what they saw demonstrated for her little sister before she passed.

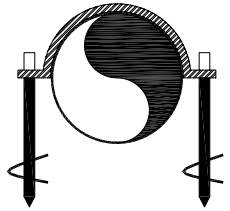


On September 6, 2020 our shining star moved on to his Heavenly home. **Nash Logan Greer** was born in Houston, Texas on September 19, 1997, the son of Gitch and Kathryn Greer. Nash attended Cy-Fair High School, University of Houston and Lone Star College. Nash was a member of Tau Kappa Epsilon (TKE) Fraternity at University of Houston where he studied Construction Management. Nash was a dedicated, hardworking and proud 3rd generation American Pipeliner working in the West Texas Dust and East Texas Rust when not attending school.



LARRY G. HOUSTON
President
3207 Dawson Road
Tulsa, OK 74110
(918) 749-Bend
(800) 730-Bend
Fax (918) 834-5910
E-mail: apbcjo@tulsa.com
www.apb-bend.com
*PIPE / TUBE BENDING / COILING
FOR INDUSTRY*

Indicate 63 on Reader Information Card



**AUGER ANCHORS
BKW, INC.**
**INTEGRITY OF CONCRETE,
EVERY ANCHOR PULL TESTED.
PATENTED.**
P.O. BOX 581611
TULSA, OK 74158
PHONE: 918-836-6767
FAX: 918-836-0141
email: bkwin@aol.com
website: www.bkwinc.com

Indicate 43 on Reader Information Card



ADAM SALINAS
NATIONAL ACCOUNT
SALES MANAGER
Mobile: 815-791-6299
Office: 815-941-1900
Fax: 815-941-1486
Email: adam@iltruck.com
320 Briscoe Drive
Morris, Illinois 60450
One Call Rents It All! 815-941-1900 www.iltruck.com



Indicate ___ on Reader Information Card



THE TEXIAN GROUP, INC. IS A PREMIER MULTI-DISCIPLINE PIPELINE FIELD SERVICES FIRM SPECIALIZING IN PIPELINE INSPECTION AND SAFETY INSPECTION.
The Texian Group, Inc. is proud to announce the opening of our New England office and welcome **Martha Gray** as Northeast Accounts Manager, to our team.
Martha is currently accepting updated resumes for positions in the Oil and Gas industry. Our compensation packages are excellent.
Please send resumes to: martha@texiangroup.com
Martha Gray: 978-855-3262

Indicate 45 on Reader Information Card



SUNBELT EQUIPMENT MARKETING, INC.
Crawler Carriers • Floatation Wagons
Stringing Trailers • Tack Rigs • Skid Racks
John Fry III
2094 Three Lakes Parkway
Tyler, Texas 75703
800-524-2591
jfry@semicrawlers.com
www.semicrawlers.com
College Station • Louisville • Tyler
Mobile: 281-384-1965
Office: 903-534-7153
Fax: 903-561-1901

Indicate 36 on Reader Information Card



Needs Farms
Straw & Hay
Steve Needs
3491 Canal rd.
Millersport, Ohio 43046
740-490-5762
srneeds@hotmail.com

Indicate 19 on Reader Information Card



NEW or USED For SALE or RENT
35 Saw Mill Locations Throughout the U.S.A.
International Distribution Available
PIPELINE SKID SERVICE
A Texas Limited Partnership
Office # (830)792-5445 - 24 hour
Fax (830)792-5484
P O Box 291528
Kerrville, TX 78029-1528
Bob Malson
Clay Malson
Email - info@pipelineskidservice.com

Indicate 35 on Reader Information Card



BIHM Equipment Co., Inc.
Louisiana dealer for **MOROOKA**
Mark Holloway
Vice President Operations
225-245-0157
m.holloway@bihmequipment.com
www.bihmequipment.com

Pipeline Division
4247 I-10 Frontage Road
Port Allen, LA 70767

Indicate 70 on Reader Information Card

BENDING ENGINEER
Engineering and Bending Solutions

Over 100 years Combined Crew Experience

Engineers, Bending, Tie-In, Lower-In, Stringing Foremen,
Bending Machine, Sideboom Operators and Laborers Available

DAVID GRIFFITH
131 Jim Arrant Rd.
West Monroe, LA 71292
(318)323-4620 cell (318)548-1919
davidmaxg@hotmail.com

Indicate 78 on Reader Information Card

Sunbelt Tractor & Equipment Company



Kevin Gully

18555 Highway 6 South
College Station, Texas 77845
p. 800-524-5750
f. 979-690-2664
m. 281-732-5365
e. kgully@sunbelttractor.com

Indicate 73 on Reader Information Card



BIHM
Equipment Co.

RIP MILLER
Rentals & Sales
Pipeline Division

Mailing Address:
P.O. Box 2355
St. Francisville, LA 70775
225.381.3155

4247 I-10 Frontage Rd.
Port Allen, LA 70767
225.278.3700 (cell)
225.381.3156 (fax)
r.miller@bihmequipment.com

Indicate 70 on Reader Information Card

SUNBELT



Shell Sanford
18555 Highway 6 South
College Station, Texas 77845
903-721-4565
ssanford@sunbelttractor.com

SEMI
800-524-2591

Indicate 73 on Reader Information Card



Alvin Chowning - COO
Gineva McKinney - CEO
Mark Chowning - Dispatch Supervisor

Office: (303)326-0374
(800)565-7735

www.osagespecial.com

PIPELINE TRANSPORTATION AGENT

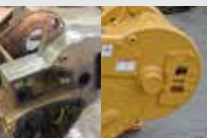
Indicate 23 on Reader Information Card



Serving customers for over 30 Years



Complete Rebuilds
New/ Used Parts
503-287-9000



PACCAR WINCH



Indicate 41 on Reader Information Card

CRESTWOOD TUBULARS, INC.

Visit our web site @ www.crestwoodtubulars.com
e-mail address: info@crestwoodtubulars.com

DISTRIBUTORS OF STEEL PIPE FOR

- Flume / Culvert Pipe
- Boring / Casing Pipe
- Line Pipe / Carrier Pipe
- Fiber Optic Casing
- Piling / Caissons
- New and Used Pipe

Tom Ferguson
800-238-7473 • (314) 842-8604 • (314) 842-9064

We want to buy your surplus/used pipe!
Call, fax, or e-mail your pipe offerings

Indicate 39 on Reader Information Card



Tulsa Tube Bending
Serving others. Building people. Pursuing excellence.

Logan Edmonson
Business Development Manager
ledmonson@ttb.com

4192 S. Galveston
Tulsa, OK 74107
www.ttb.com

Direct (903) 930-3353 • Main (918) 446-4461

Indicate 23 on Reader Information Card



CAN YOUR PIPE HANDLER DO THIS?
IT'S TIME TO GET A GRIP.

Outperform vacuum lifts with the DECKHAND®
Pipe Handling System by LaValley Industries.

Securely grip pipe in even the most challenging positions.

Easily handle pipe covered in mud, snow, or ice—
even pipe fully submerged in water.

Grip pipe from an off-center position.

Use interchangeable grab arms to confidently
adjust to any condition.

Get a firm grip on the future of pipe handling
with DECKHAND.



CRC-Evans.com

CUTTING EDGE FIELD-TO-FINISH SOLUTIONS

Our services are foundational to our values and mission as a company. Building and managing world-class midstream infrastructure does not allow for the treatment of professional services as ancillary to the construction and planning. We have built a focused, full lifecycle expertise around providing these services for you, safely.

OUR EXPERTISE:

- Inspection
- Survey / Mapping / GIS
- Environmental Services
- Pipelines
- Project Management
- Safety and Training
- Technical Support and Training
- Non-Destructive Testing Auditing

APPLIED
CONSULTANTS, INC.



EAGLE
INFRASTRUCTURE SERVICES



EAGLE-INFRA.COM

918.358.5735

EAGLE INFRASTRUCTURE SERVICES